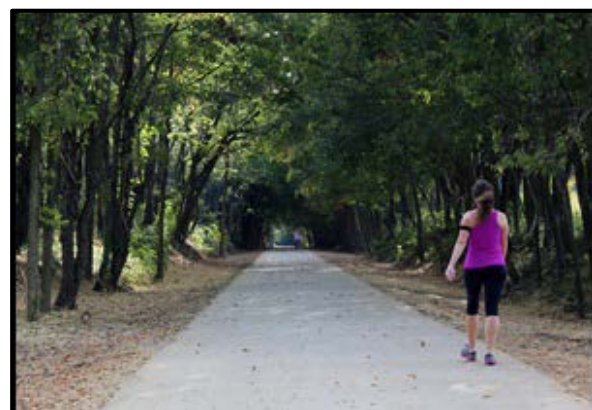




# LEXINGTON AREA METROPOLITAN PLANNING ORGANIZATION

## TRANSPORTATION IMPROVEMENT PROGRAM FY 2017 through FY 2020



**August 2016**

**Prepared in Cooperation with:**

**FEDERAL HIGHWAY ADMINISTRATION (FHWA)**

**FEDERAL TRANSIT ADMINISTRATION (FTA)**

**KENTUCKY TRANSPORTATION CABINET (KYTC)**

**TRANSIT AUTHORITY OF LEXINGTON-FAYETTE**

**URBAN COUNTY GOVERNMENT (LEXTRAN)**

**BLUEGRASS COMMUNITY ACTION PARTNERSHIP (BUS)**

# TABLE OF CONTENTS

<b>EXECUTIVE SUMMARY</b> .....	<b>1</b>
<b>CHAPTER 1 INTRODUCTION</b> .....	<b>2</b>
1.1 PURPOSE OF THE TIP.....	2
1.2 LEGAL FRAMEWORK & ROLE OF THE MPO.....	2
<b>CHAPTER 2 TIP DEVELOPMENT</b> .....	<b>6</b>
2.1 TIP PROJECT SELECTION.....	6
2.2 CONSISTENCY WITH REGIONAL PLANS.....	7
2.3 PARTICIPATION IN TIP DEVELOPMENT.....	7
2.4 TIP APPROVAL.....	9
2.5 TIP AMENDMENT & MODIFICATION.....	9
<b>CHAPTER 3 FINANCIAL PLAN</b> .....	<b>11</b>
3.1 FINANCIAL RESOURCES.....	11
3.1.1 Highway Fiscal Considerations.....	11
3.1.2 Transit Fiscal Considerations.....	12
3.1.3 Financial Constraint.....	12
3.1.4 Year of Expenditure.....	14
3.2 OPERATIONS, MAINTENANCE AND PRESERVATION.....	14
3.2.1 State Role.....	14
3.2.2 Role of Other Agencies.....	15
3.2.3 Funding.....	15
<b>CHAPTER 4 PROGRAM &amp; PROJECT TABLES</b> .....	<b>17</b>
4.1 FEDERAL & REGIONALLY SIGNIFICANT PROJECTS.....	17
4.2 NON-REGIONALLY SIGNIFICANT & UNFUNDED PROJECTS.....	17
4.3 FEDERAL TRANSIT ADMINISTRATION PROJECTS.....	17
4.4 GROUPED PROJECTS.....	18
4.5 FUNDING SUMMARY TABLE.....	18
4.6 PROJECT REFERENCE TABLE.....	19
4.7 PROJECT MAP.....	20
APPENDIX A - STATUS OF PROJECTS NOT IN FY2013-2016 TIP.....	48
APPENDIX B - RESOLUTIONS.....	51
APPENDIX C - MPO COMMITTEE MEMBERSHIP.....	54
APPENDIX D - PUBLIC NOTICE.....	56
APPENDIX E - PUBLIC COMMENTS.....	59
APPENDIX F - ABBREVIATIONS & ACRONYMS.....	63

## PROJECT TABLES

<i>Table 1</i>	<i>SLX Projects (Federal-aid Highway projects with a 20 % match)</i> .....	<i>23</i>
<i>Table 2</i>	<i>NON-SLX Projects (Federal-aid Highway projects)</i> .....	<i>25</i>
<i>Table 3</i>	<i>Regionally Significant State Funded Projects</i> .....	<i>29</i>
<i>Table 4</i>	<i>Informational Supplement – Unfunded and/or Non-Regionally Significant State Projects.</i>	<i>30</i>
<i>Table 5</i>	<i>Federal Transit Administration Projects</i> .....	<i>31</i>
<i>Table 6</i>	<i>Grouped Projects</i> .....	<i>32</i>
<i>Table 6A</i>	<i>Grouped Projects Selected</i> .....	<i>34</i>
<i>Table 7</i>	<i>TIP Summary Table</i> .....	<i>44</i>

**LIST OF FIGURES**

<i>Figure 1.1</i>	<i>MPO Planning Area</i> .....	<i>3</i>
<i>Figure 3.1</i>	<i>Anticipated Highway Revenue and Expenditures</i> .....	<i>13</i>
<i>Figure 3.2</i>	<i>Anticipated Transit Revenue and Expenditures</i> .....	<i>13</i>
<i>Figure 3.3</i>	<i>Maintenance/Operations Funding Estimates</i> .....	<i>16</i>
<i>Figure 4.1</i>	<i>TIP Project Map</i> .....	<i>20</i>

## Executive Summary

The Lexington Area Metropolitan Planning Organization (MPO) is the designated metropolitan transportation planning organization for the Lexington Urbanized Area which includes Fayette and Jessamine Counties and a small portion of Scott County.

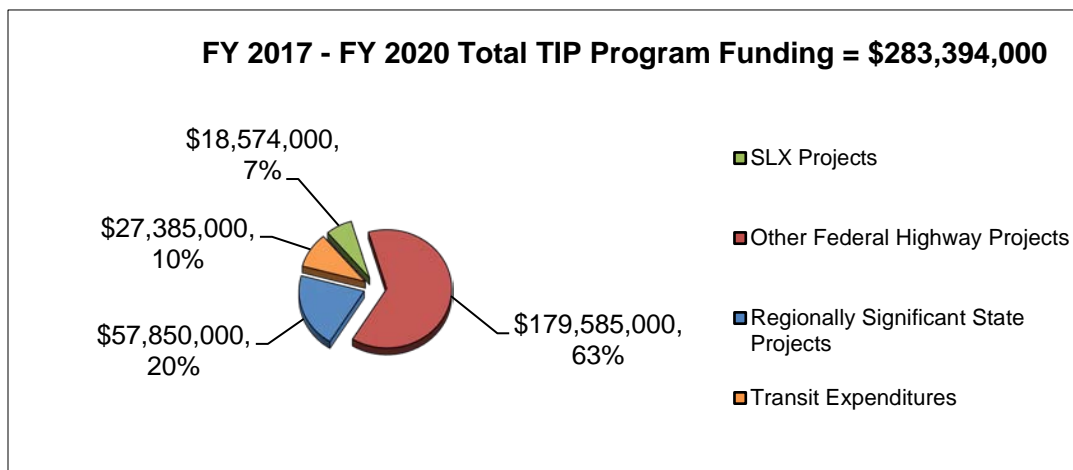
One of the primary responsibilities of an MPO is the development of a Transportation Improvement Program (TIP). The TIP is the near-term (4 year) program of scheduled transportation improvements that implement the long-range 2040 Metropolitan Transportation Plan (MTP). Projects that seek the use of federal transportation funds are required by federal legislation to be included in the TIP.

The FY 2017 through FY 2020 TIP contains transportation projects requesting federal funds through the Fixing America’s Surface Transportation Act (FAST Act). All federal and regionally significant state funded projects that have an implementation phase occurring within this four year period are presented in this document. The TIP is a dynamic document and has the flexibility to be amended and modified as programs and projects are implemented. A major update to the TIP occurs at least every four years.

The 2017-2020 TIP was developed in cooperation with the Kentucky Transportation Cabinet (KYTC) and transit providers. It is consistent with the MPO 2040 Metropolitan Transportation Plan (MTP), the Congestion Management Process, and the Comprehensive Plans for Fayette and Jessamine County. Citizens, local, state and federal public agencies, representatives of transportation providers, and other interested parties/stakeholders were provided with the opportunity to assist in the TIP’s development and to comment on the program prior to approval.

All project costs within the TIP are consistent with expected revenues and the TIP was determined to be fiscally constrained. Projects sponsored by KYTC and included in this document are based on the fiscally constrained Statewide Transportation Improvement Program (STIP).

**Transportation Improvement Program (TIP):**  
 A prioritized listing/program of transportation projects covering a period of four years that is developed and formally adopted by an MPO as part of the metropolitan transportation planning process, consistent with the MTP, and required for projects to be eligible for federal funding.



# Chapter 1 INTRODUCTION

In 1973, the Lexington Area Metropolitan Planning Organization (MPO) was designated by the Governor of Kentucky to carry out the federally-mandated metropolitan transportation planning process, including the development of a long range Metropolitan Transportation Plan (MTP) and a Transportation Improvement Program (TIP).

## 1.1 Purpose of the TIP

The TIP is a phased, multiyear, multimodal program of transportation projects that describes the schedule for obligating federal funds to projects in the Lexington area. The TIP is the official process by which the MPO requests Federal-aid Highway Program funds through the Commonwealth of Kentucky and funds from the Federal Transit Administration to support project and program implementation. The TIP development process involves a comprehensive and realistic appraisal of the transportation priorities of the community, balanced with an analysis of available resources to finance them. The FY 2017 through FY 2020 TIP contains the MPO's priority list of programs and projects to be implemented during this four year time period.

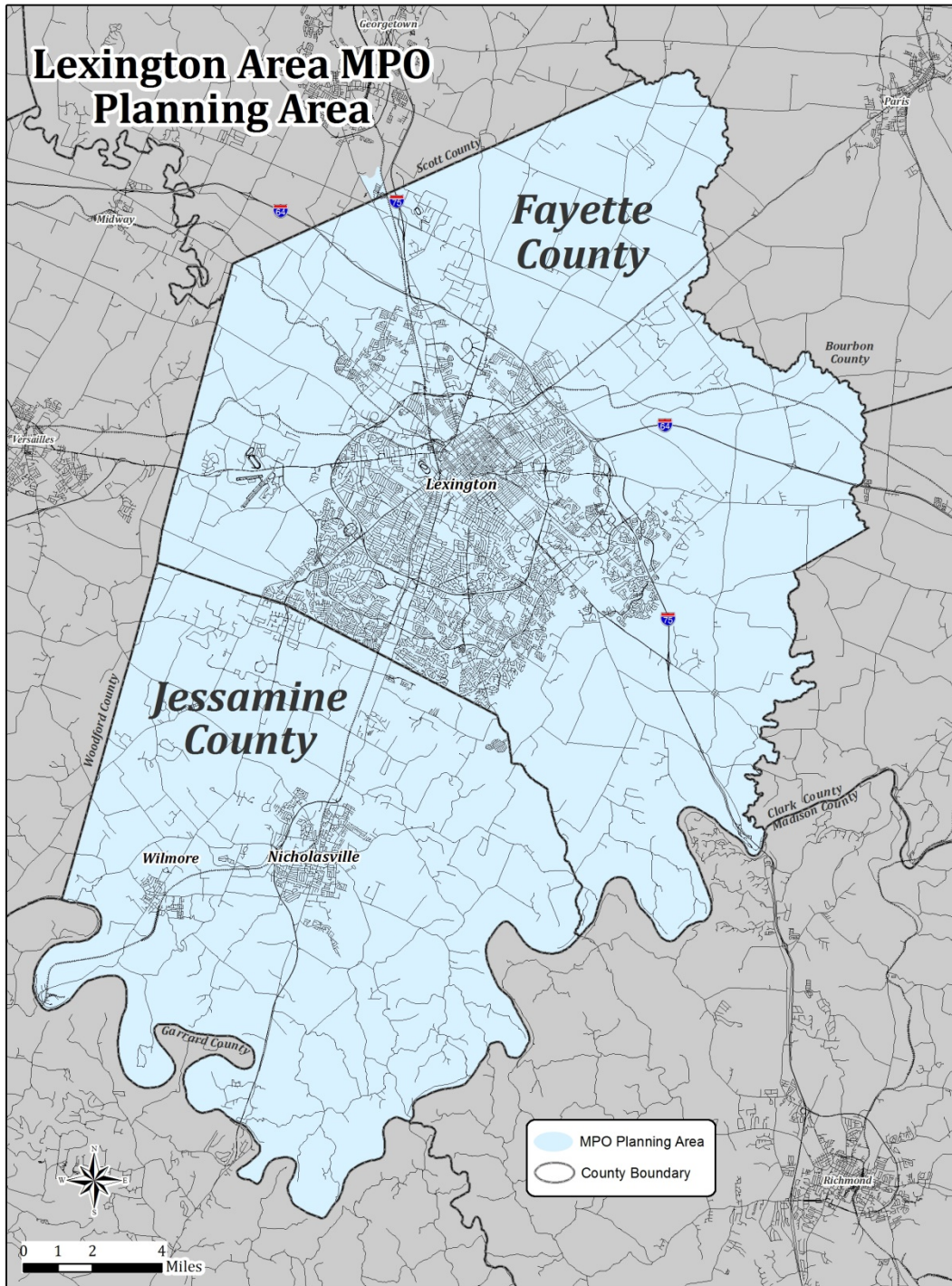
While estimated implementation dates are given for projects in the plan, it should be noted that both project development and the TIP are dynamic. The TIP is not as much a construction timeline as it is a financial program for scheduling and obligating federal funds; it represents an agency's intent to construct or implement a specific project and the anticipated flow of federal funds and matching state or local contributions.

Transit projects must also be included in the TIP to be eligible for Federal Transit Administration (FTA) funding. The transit portion of the TIP is used by the FTA for allocating FTA funding to transit providers for capital and operating assistance.

## 1.2 Legal Framework & Role of the MPO

Federal law requires all urbanized areas with populations greater than 50,000 people to designate a Metropolitan Planning Organization (MPO) to develop transportation plans for the region. The Lexington Area MPO is thereby federally designated to conduct these activities for Fayette and Jessamine Counties (and a small section of Scott County). A core function of the MPO is to develop long-range and short-range transportation plans in consultation with area stakeholders. To that end, each MPO works with federal, state and local governments, transit agencies, transportation stakeholders and the public to ensure transportation policies, plans, projects and programs help move the region forward based upon mutually agreed upon goals. The MPO functions under a committee structure that includes a decision-making [Transportation Policy Committee](#) (TPC), several technical committees and staff.

The MPO planning area consists of the Fayette and Jessamine Counties, and the cities of Lexington, Nicholasville and Wilmore; an area of 458 square miles with a 2015 population of 366,449 persons. The 2010 U.S. Census also designated a small section of Scott County as part of the urbanized area and therefore part of the MPO planning area.



**Figure 1.1 MPO Planning Area**

Former federal legislation, as well as the current Fixing America's Surface Transportation (FAST) Act (December 4, 2015) provides the legislative background for MPO planning efforts. MPOs are directed to facilitate a continuing, cooperative and comprehensive planning process. Considering local input and the FAST Act goals and emphasis areas, the Lexington Area MPO sets forth goals for the Lexington Area in the long range 2040 Metropolitan Transportation Plan (MTP). These establish a foundation for the selection of projects, programs and investments in both the MTP and the TIP.

- Provide for safe travel for all users
- Provide access and choices
- Provide connectivity within and between modes
- Be efficient, reliable and well maintained
- Support economic vitality and competitiveness
- Contribute to community character
- Enhance the environment
- Support health and wellness

Furthermore, the Lexington Area MPO has adopted and continues to implement the six "Livability Principles" set forth in the 2009 coordinated policy of the U.S. Dept. of Transportation, U.S. Dept. of Housing and Urban Development, and the U.S. Environmental Protection Agency. The principles are:

- Provide more transportation choices
- Promote equitable, affordable housing
- Enhance economic competitiveness
- Support existing communities
- Coordinate and leverage federal policies and investment
- Value communities and neighborhoods

In addition to these planning goals and principles, the new FAST Act Legislation also stipulates a performance-based planning framework for the following areas:

- Safety
- State of good repair
- Congestion
- Reliability
- Freight
- Environmental Sustainability
- Project Delivery

The US Department of Transportation (USDOT) recently established national performance measures for these goal areas. In the near future, State DOTs and MPOs are required to establish performance targets and to include these in their planning process, linking them to investment priorities. DOTs and MPOs will also report progress toward achieving these targets. The purpose is to promote the most efficient use of limited funds, to attain critical outcomes and enhance decision-making. Future updates and amendments to the Lexington Area MPO TIP and plans shall reflect these new performance requirements according to federal timelines and regulations.



TIPs are also required to meet all other federal requirements in [CFR 450.324](#) including fiscal constraint, consistency with the [2040 Metropolitan Transportation Plan \(MTP\)](#) and conformity with the Clean Air Act (CAA) designated air quality standards. The Lexington Area MPO is designated by the Environmental Protection Area (EPA) as an “attainment area” for current eight-hour ground-level ozone and particulate matter (soot) air quality standards; therefore, no air quality conformity demonstration is required for the Lexington MPO’s TIP.

## Chapter 2 TIP DEVELOPMENT

### 2.1 TIP Project Selection

The initial concept and development of a transportation project can originate from a variety of sources, including technical analysis, public input, and input from government or stakeholder agencies as well as local and state elected officials. These sources inform the [Transportation Policy Committee \(TPC\)](#) in their development and adoption of the long-range [Metropolitan Transportation Plan \(MTP\)](#). The TPC and MTP set forth transportation policy and priorities for the Lexington region and it is from this document/committee that projects move into the TIP for implementation. The TPC and MTP also inform state-level decision-makers about the priorities of the region to assist the Kentucky Transportation Cabinet and State Legislature in selecting projects for inclusion in the State Transportation Improvement Program (STIP) and Kentucky State Highway Plan. Once a project is included in the STIP it must also be included in the MPO's TIP and vice versa.

Technical analysis, which includes the [Congestion Management Process \(CMP\)](#), transportation studies, and other technical data, provides planners and decision-makers with up-to-date quantitative and qualitative information concerning roadway conditions and project specific "purpose and need." The CMP is a systematic process for monitoring and managing the mobility of people and goods. CMP strategies help identify and prioritize projects that enhance the transportation system.

Public input and interested stakeholders provide focus to the CMP and transportation planning efforts through the MPO and KYTC participation process. These sources coalesce in the MPO's [Metropolitan Transportation Plan \(MTP\)](#). The MTP, which is updated every 5 years, identifies long range needs and priorities and is the guiding document for transportation planning over a 20+ year timeframe. The results of these efforts (technical analysis and stakeholder input) are integrated into a criteria-based scoring procedure to rank projects on how they meet federal, state, and local goals and objectives that are adopted by the TPC including safety, economic development, multimodalism, congestion reduction, air quality improvements, etc. A full description of the prioritization process is found in [Appendix D](#) of the MTP. In order to become eligible for federal funding, transportation improvements must initially be identified in the MPO's MTP either specifically or as a general project type as in the case of Grouped Projects. Once a project is included in the adopted plan, it can be then be programmed in the TIP.

Federally funded projects may also be added to the TIP through means other than the MPO planning process. Local governments, private and public entities may apply for special grant funded programs which follow an official application process. These programs include: Congestion Mitigation Air Quality (CMAQ), Surface Transportation Block Grant (STBG), Transportation Investment Generating Economic Recovery (TIGER) and others. After projects are selected and awarded by the KYTC, FTA or FHWA, they are added to the TIP for project tracking purposes. KYTC and FTA may also elect to fund projects that address a safety or deficiency problem that has been identified through operational and maintenance functions. These grant programs and selected projects, referred to as "Grouped Projects" are also folded into the TIP for tracking purposes. [Group Projects](#) are described in greater detail in Chapter 4.

In addition to all federally-funded projects, the TIP also includes regionally significant projects that use state and local funds. Thus, a total program of transportation projects for the region is presented in the TIP.

## 2.2 Consistency with Regional Plans

Projects in the TIP must be consistent with the MPO's [Metropolitan Transportation Plan \(MTP\)](#). Projects that are included in the TIP are drawn from the highest priority transportation projects in the near term of the 2040 MTP. The MTP's list of projects are identified by the TPC as a regional priority utilizing established MPO prioritization and participation processes that consider the region's transportation goals and objectives. The MTP must be updated every 5 years and will be reviewed and updated in 2019.

The TIP is also consistent with other transportation plans and programs of the MPO that inform the development of the MTP including:

- FY 2013 – FY 2016 Transportation Improvement Program (previous TIP)
- MPO Regional Bicycle and Pedestrian Master Plan
- Congestion Management Process
- Lexington-Fayette Urban County Comprehensive Plan
- Jessamine County Joint Planning Commission Comprehensive Plan
- Other studies such as Small Area Plans, Corridor Studies, etc

## 2.3 Participation in TIP Development

Public and stakeholder participation is an important part of the TIP development process. Participation and public outreach activities are directed by the MPO [Participation Plan \(PP\)](#) which includes coordination and consultation with regional stakeholders. This includes citizens, affected public agencies, representatives of public transportation agency employees, freight providers, private transportation providers, users of public transportation, users of bicycle and pedestrian transportation facilities, people with disabilities and other interested parties who are given the opportunity to provide input into the document. The full list of consultation contacts/agencies who are notified to review and provide feedback on the TIP are included in Appendix A of the [Participation Plan](#).

The MPO's method for engaging and notifying the public on the development of the TIP is also outlined in the PP. A summary of public input efforts, their comments and how the comments were addressed in the TIP are located in [Appendix E](#) of this document.

MPO committee work is one way in which regional stakeholders can provide input on the TIP. Through the MPO Transportation Technical Advisory Committee (TTCC), local and regional partners coordinate, discuss project/program needs and status. Members of the TTCC include:

- LFUCG Divisions of Planning, Engineering, and Traffic Engineering;
- Representatives from Jessamine County;
- Representatives of the Jessamine County Transportation Task Force;

- Representatives from the cities of Nicholasville and Wilmore;
- School transportation representatives including Fayette and Jessamine Counties Public Schools and University of Kentucky Parking and Transportation;
- Maintenance, operations, and public safety agencies;
- Bluegrass Area Development District (BGADD);
- Federated Transportation Services of the Bluegrass (FTSB);
- Transit Authority of Lexington-Fayette Urban County Government (Lextran);
- Bluegrass Community Action Partnership (Bluegrass Ultra-transit - BUS);
- Kentucky Transportation Cabinet (KYTC);
- Federal Highway Administration (FHWA);
- Bluegrass Airport;
- RJ Corman Railroad Company;

In accordance with federal law, TIP projects are selected and the document is developed and distributed for comment in such a way as to ensure compliance with all applicable requirements of the [Americans with Disabilities Act](#) and [Title VI of the Civil Rights Act of 1964](#). This means the MPO ensures: transportation services, facilities, information and other resources are distributed equitably throughout the MPO area; programs and practices do not adversely impact neighborhoods or groups; efforts are made to obtain minority participation/involvement in the process; and transportation projects and programs serve all members of the community regardless of income, race, age, ability and any other socioeconomic factors. Upon request, the MPO also provides assistance to anyone of Low English Proficiency (LEP). Title VI and ADA complaint procedures for the MPO are outlined in Chapter 4 of the [Participation Plan](#).

A summary of procedures for public and stakeholder involvement used during TIP development that are outlined in the Participation Plan include:

- Notifications for the availability of public drafts. Legal ads are published in the Lexington Herald-Leader and Jessamine Journal; advertisement on the MPO website; social media notifications; a media press release; notification to all MPO mailing lists including MPO Committees, Consultation Contacts and Outreach Contacts for the Traditionally Underserved.
- Notifications requesting public review and comment on the TIP shall include where to send written or digital comments and state that special provisions for persons with disabilities will be accommodated with 48 hour notice (i.e. large print documents, audio material, someone proficient in sign language, a translator, or other provisions as requested). The notice shall also inform the public that copies of the draft TIP are available for review at local libraries, offices of member agencies, and other specified locations.
- All public notices issued by the MPO for public involvement activities related to the TIP ( and time established for public review and comment will include an explicit statement that the public participation efforts for the TIP satisfy the public participation requirements for Lextran’s Program of Projects (POP). See the PP for further explanation.
- The public comment period is a minimum of thirty days effective from the date of the legal notice.
- MPO staff will assemble and provide a summary of all public comments to MPO

- committees to be considered and addressed before adopting the final document.
- A summary of public involvement activities and input will be included in the final TIP document.
- Additional public review periods will be added if merited by public comments that warrant significant changes.

## 2.4 TIP Approval

The [MPO Transportation Policy Committee](#) (TPC) directs the development of the TIP. The TIP is updated at least every four years, although it may be amended or modified by the TPC at any time. The updating of the TIP document and subsequent amendments and modifications gives the TPC a direct, continuing role in the programming of transportation improvements.

Following public and stakeholder input and any subsequent adjustments, the TIP is formally adopted by the MPO Transportation Policy Committee and submitted to the Kentucky Transportation Cabinet (KYTC) for their approval and inclusion in the [Statewide Transportation Improvement Program](#) (STIP), the state's fiscally constrained programming document for federal funds. The TIP is also used by the KYTC in the preparation of the [Kentucky Highway Plan](#), a six-year plan approved by the state legislature every two years that includes both federal and state projects.

## 2.5 TIP Amendment & Modification

The TIP provides a “snapshot” of the region’s transportation programming intent and the current schedule for implementation. As projects and programs are developed, amendments and modifications to the TIP are often necessary to allow the document and program funds to dynamically adjust to changing conditions, costs and schedules. Transportation priorities/needs of the community may also change during the four year period covered by the TIP. An amendment and modification process is provided to facilitate these changes. Major changes are accommodated through an “Amendment” process. Amendments to the TIP are required when there are significant changes that:

- Add/Delete a project or phase(s) that requires a federal action (authorization) and is not eligible for an Administrative Modification.
- Change in design concept and scope of the project.
- Change in cost estimates that affect fiscal constraint.
- Change that affects air quality conformity in non-attainment areas including regional significant projects funded with non-federal funds.
- Change from non-federal to federal funds unless a Grouped Project.

The MPO’s [Participation Plan](#) (PP) outlines the notification and public/stakeholder involvement process that the MPO uses when these significant changes to the TIP occur. Other changes to the TIP that are considered minor are termed “Administrative Modifications” and include changes to:

- Correct obvious minor data entry errors.
- Split or combine projects without modifying the original project design, concept and scope.

- Change or clarify elements of a project description that do not alter the original project design, concept, and scope.
- Move a project from one federal funding category to another.
- Move a project from federal funding to state funding.
- Shift the schedule of a project or phase within the years covered by the TIP.
- Update project cost estimates (within the original project scope and intent).
- Move any identified project phase programmed for previous year into a new TIP.
- Add a project of a type listed as a Grouped Project.

An Administrative Modification does not require public review and comment, re-demonstration of fiscal constraint, or an air quality conformity determination (in nonattainment and maintenance areas). The process used by the MPO for Administrative Modifications is also found in the MPO PP. Both the PP and a running list/copy of [TIP amendments and modifications](#) for the MPO's current TIP are available on the MPO website [www.lexareampo.org](http://www.lexareampo.org).

## Chapter 3 FINANCIAL PLAN

The following information summarizes the Lexington Area MPO's FHWA and FTA program funding. Fundamental features of the TIP are: (1) a listing of the financial resources that are available to carry out TIP programs and projects which demonstrates financial constraint by balancing the estimated cost of projects and the expected revenue (an important aspect of financial constraint is to ensure costs are listed in an estimate of "year of expenditure dollars"); and (2) the inclusion of highway and transit operations and maintenance costs and revenues. All funding estimates have been developed together with the MPO, KYTC and public transit providers.

### 3.1 Financial Resources

The FAST Act identifies federal funding sources for road, highway, transit and other transportation related improvements. The key aspect of the FAST Act is its flexibility of funds, empowerment of local jurisdictions in assigning project priorities, public participation to a greater extent in planning and decision making, and fiscal constraint.

Most all federal transportation funding programs require a local match commitment for projects. This local match may come from a variety of state or local fund sources; however, the match cannot come from any federally allocated source.

#### Major FAST Act programs that provide funding are:

- Surface Transportation Program (STP).
- Surface Transportation Program – dedicated to Lexington (SLX)
- National Highway Performance Program (NHPP) – incorporates NHS, IM, and Bridge programs.
- Congestion Mitigation and Air Quality Improvement Program (CMAQ).
- Highway Safety Improvement Program (HSIP/SAF).
- Surface Transportation Block Grant (STBG) – formerly Transportation Alternatives Program (TAP)
- FTA Section 5307 transit urbanized area formula funds.
- FTA Section 5309 transit capital investment funds
- FTA Section 5310 elderly and disabled transportation funds
- FTA Section 5311 formula grants for rural areas
- FTA Section 5337 state of good repair
- FTA Section 5339 busses and bus facilities

#### 3.1.1 Highway Fiscal Considerations

Highway programs and projects are listed in the project tables beginning on [page 23](#) with various funding categories identified.

The funding is shown by fiscal year and includes: a "pre FY 2017" cost column; the required FY 2017 through FY 2020 activities; and a "Future" cost column. The TIP provides programming information on planned future-year funded projects to give a current and accurate total cost estimate. However,

cost estimates can be subject to change as more detailed information is gathered through the project development process.

The MPO works closely with its federal and state transportation partners when planning, selecting, and prioritizing Surface Transportation Program funds dedicated to the Lexington MPO area (SLX). The SLX program consists of federal funds matched with state or local program funds. The MPO has decision authority over the SLX funds and is responsible for selecting and prioritizing SLX projects within the fiscal constraints of the current SLX allocation (see Table 1 for SLX projects). The MPO currently receives an allocation of approximately \$8.0 million in SLX funds (\$6.4 million federal funds matched with \$1.6 million local funds) each fiscal year.

Although the Lexington Area MPO has significant input in identifying local needs and in determining project funding priorities (the MPO has complete control for SLX projects), it should be understood that the MPO does not have direct control over many sources of funding identified herein. Final decisions regarding the allocation of funds (project selection, revenue source, schedule, etc.) are made by the Kentucky Transportation Cabinet (KYTC) and the KY State Legislature. In order to address the full range of transportation needs on a statewide level and within the Lexington urbanized area, the Cabinet and Legislature make use of a variety of available revenue sources (or funding types).

### **3.1.2 Transit Fiscal Considerations**

The transit financial element is listed in [Figure 3.2](#) which identifies the various Federal Transit Administration (FTA) funding categories. The MPO coordinates with Lextran and other transit/paratransit service providers to ensure FTA funding obligations and forecasts are current and accurate. The transit financial forecast was compiled from existing financial data, financial trends and projections. Local share funding for Lextran comes from property tax revenue and is used as the source for local match of federal funds and operating expenditures.

The transit financial element is estimated to average \$34 million per year in funding over the TIP's four fiscal year period, totaling \$137 million from FY 2017 through 2020 as shown in [Figure 3.2](#).

### **3.1.3 Financial Constraint**

Federal law requires that TIPs be financially constrained. That is, this document should include the estimated cost associated with each project and the anticipated revenue source. Additionally, only those projects for which a current or proposed revenue source can be identified may be listed, thus ensuring a balance between total project costs and revenues. This requirement helps the MPO and the State develop a deliverable program of projects.

As indicated in the figure below, the estimated ratio of revenues to expenditures for all funding sources for FY 2017-2020 is 1.0, which means our planned expenditures balance with our anticipated revenues. A complete summary by program and fiscal year is provided in TIP Summary Table ([Table 7](#)).



HIGHWAY ELEMENT	FY 2017 – FY 2020 TOTALS
Total Programmed Expenditures	\$297,314,000
Total Anticipated Revenues	\$297,314,000
Ratio of Expenditures to Revenue	1.0

**Figure 3.1 Anticipated Highway Revenue and Expenditures**

TRANSIT ELEMENT	FY 2017 – FY 2020 TOTALS
<b>Expenditures</b>	
Total Operating Expenditures	\$ 109,692,000
Total Capital Outlays	\$ 27,446,000
<b>Total</b>	<b>\$ 137,138,000</b>
<b>Revenue</b>	
FTA 5307	\$ 23,230,000
FTA 5310	\$ 836,000
FTA 5311	\$ 699,000
FTA 5337	\$0
FTA 5339	\$ 2,540,000
State Funding	\$ 840,000
Local Tax Levy	\$ 66,000,000
Passenger Fares & Other Operating Revenue	\$ 42,993,000
<b>Total</b>	<b>\$ 137,138,000</b>
<b>Ratio of Expenditures to Revenue</b>	<b>1.0</b>
Note: These totals are for Lextran and Bluegrass Community Action BUS. Lextran receives and expends a majority of transit funding.	

**Figure 3.2 Anticipated Transit Revenue and Expenditures**

The specific projects and the program or planned revenue source and schedule shown in Project Tables 1-7 (beginning on [page 23](#)) have been identified by the KYTC in the [Statewide Transportation Improvement Program](#) and/or the Kentucky State Highway Plan. It should be expected that this program of projects will be subject to periodic changes in schedules or planned revenue source due to adjustments that must be made to balance costs and revenues at the statewide level, and also due to various project-related delays. These changes will be initiated by the Cabinet and will be reflected in this document by TIP Administrative Modifications or Amendments.

To show fiscal balance, the MPO has made the distinction in our project tables (see [Chapter 4](#)) to separate the region's federally funded projects ([Tables 1 and 2](#)) and state funded projects ([Tables 3 and 4](#)). Federally funded projects are identified in the fiscally constrained STIP. State-funded projects are included in the KY State Highway Plan. The Highway Plan is approved by the State Legislature every two years and outlines the state's construction program over the next six years for both state and federal funding programs; however, the Highway Plan is not always fiscally balanced. In recent years, the Highway Plan has been fiscally balanced for federal funds but state-funded projects have been over-programmed. Thus, the programming for state-funded projects for the Lexington Area includes some level of uncertainty.

[Table 7](#) of the TIP provides a summary of project/program costs and revenues by funding source and year for the Lexington Area from FY 2017-2020. A balance between costs and revenues is indicated; therefore, financial constraint is demonstrated.

Future Year programming information is also included in project tables (outside of the fiscally constrained 4-yr period) to provide an early glimpse of anticipated TIP program/project allocations needed to complete the project.

### **3.1.4 Year of Expenditure**

The FAST Act requires inflationary cost factors to be used to provide a better assessment of future transportation project costs. The KYTC provided the MPO with the following Year of Expenditures (YOE) factors and adjustments to the cost of project phases:

- DESIGN PHASE (four-percent per year)
- RIGHT-OF-WAY PHASE (five-percent per year)
- UTILITIES PHASE (four-percent per year)
- CONSTRUCTION PHASE (four-percent per year)

Project cost estimate adjustments should be expected due to variation in economic conditions. YOE financial planning ensures that inflation has been accounted for when demonstrating fiscal constraint so that adequate funding will be available to construct, operate and maintain the transportation improvements and existing transportation system.

## **3.2 Operations, Maintenance and Preservation**

One of the key goals of the TIP is to operate and maintain a high quality transportation network, and to preserve the significant investment that has been made in transportation facilities throughout the Lexington MPO area.

### **3.2.1 State Role**

Kentucky's current [Statewide Transportation Improvement Program \(STIP\)](#) continues its emphasis on operating and maintaining existing transportation facilities. The KYTC is primary agency tasked with ensuring the National Highway System and the State Road System is operated and maintained

to greatest degree possible for safety and system reliability. The goal of local funding is to supplement, not supplant, the federal-level revenues that KYTC dedicates to maintenance and preservation in the Lexington MPO area.

The KYTC is organized to provide services in four key areas to ensure routine maintenance and operation of the regional freeway/highway network including: roadway maintenance; bridge maintenance; rest area maintenance; and traffic operations. Example activities include:

- maintenance of pavement,
- guard rails and median cable barriers,
- drainage channels, tunnels, retention basins, and sound walls,
- maintenance and restoration of landscaping,
- roadway lighting,
- traffic signals,
- signing and striping,
- freeway management system support,
- utility locating services,
- encroachment permits,
- crash clearing,
- repair of damaged safety features,
- litter pickup,
- snow and ice removal.

### ***3.2.2 Role of Other Agencies***

Lexington MPO member agencies (Lexington-Fayette Urban County Government, Nicholasville, Wilmore and Jessamine County) work to maintain and operate the transportation system in a way that preserves past investments and maximizes the safety and efficiency of existing facilities. To achieve this goal, agencies apply state and local funds and their share of state highway user revenue funds (municipal and county-aid funds) towards maintenance and operation activities similar to those listed above.

Regional transit and paratransit providers must also operate and maintain service, with operating costs being the primary financial need for these transit services. For instance, Lextran has estimated they will spend over \$109 million to operate and maintain transit service over the four year period of the TIP.

### ***3.2.3 Funding***

The TIP and 2040 MTP identify existing and proposed revenues for anticipated capital needs, operating expenses and maintenance costs. In order to preserve, protect and maintain an evolving transportation system, the MPO will continue to coordinate with operational and maintenance agencies to ensure adequate funding.

Total maintenance expenditures estimated for major operation and maintenance agencies in FY-2016-2020 are just over \$204 million, split nearly even between roadways and transit (see [Figure 3.3](#)).

<b>Maintenance/Operations Funding 2017 – 2020</b>	
<b>Major O/M Funding Sources</b>	<b>O/M Funding Estimate</b>
State Funding (KYTC)	\$32,800,000
Local Funding	\$61,600,000
Lextran	\$109,692,000
<b>Total</b>	<b>\$204,092,000</b>
Source: KYTC (audited expenditures), LFUCG (Traffic Engineering + Streets & Roads + audited expenditures), Lextran (operations)	

**Figure 3.3 Maintenance/Operations Funding Estimates**

## Chapter 4 PROGRAM & PROJECT TABLES

The following project tables show programmed highway projects by funding type; transit projects with programmed FTA funds; placeholders for group projects; and informational/supplemental project tables.

### 4.1 Federal & Regionally Significant Projects

These tables address projects which are scheduled to receive federal and state funds for regionally significant projects. Each project table includes information on the funding allocated to that project prior to 2017, the current TIP FY 2017—2020 funding and estimated future funding. Funding estimates were provided by project sponsors. All funding references are denoted in [Year of Expenditure](#) (YOE) dollars to provide a more-realistic and accurate future project cost estimate. Project tables include:

**[Table 1](#) – *SLX Funded Project*** – Projects funded with federal funds that are dedicated to Lexington planning area and selected by the local MPO.

**[Table 2](#) – *Other Federally Funded Projects*** – Projects that are funded with all other (non-SLX) federal funds that are selected by KYTC & State Legislature in consultation with the MPO.

**[Table 3](#) – *Regionally Significant State Funded Projects*** – Projects that are of regional significance and are funded with state funds that are selected by KYTC and state Legislature in consultation with the MPO. These are state funded projects that the MPO can reasonably expect to receive.

### 4.2 Non-Regionally Significant & Unfunded Projects

This section includes State-funded projects either:

1. Not classified as “regionally significant” and thus not required to be formally included in the TIP; and/or
2. That appear in the Kentucky State Highway Plan which has over-programmed state funding sources (thus funding may not be readily available for these projects as scheduled in the State Highway Plan).

These two project types are not officially part of the TIP but are listed for informational purposes.

**[Table 4](#) – *Information Supplement of Unfunded and/or Non-Regionally Significant Projects***

### 4.3 Federal Transit Administration Projects

These projects are funded with FTA funds and are selected by FTA, KYTC and local transit providers. These include operating and capital funds for public transit and paratransit.

**[Table 5](#) – *Federal Transit Administration Projects***

## 4.4 Grouped Projects

Transportation planning regulations allow projects of a smaller scale to be grouped in the TIP by function, work type or geographic area. Such projects are usually not controversial, produce negligible impacts and positive benefits for safety, traffic operations or system preservation. The TIP includes placeholders for these projects that may be allocated federal funding through a variety of federal funding programs. These projects are typically identified through the day to day operations of the transportation system or as a result of competitive grant awards. These include safety projects, operational improvements targeted to reduce congestion, transit projects and bicycle & pedestrian projects among others. The KYTC and FHWA allow these projects to be added to the TIP by Administrative Modification when they are identified and awarded. In instances of a project being identified by the KYTC, a project description, estimated cost and funding source are forwarded to the MPO for inclusion in the TIP. This includes a commitment of funds from the KYTC as part of the Statewide Transportation Improvement Program (STIP). Financial constraint for Grouped Projects is demonstrated in the STIP by KYTC.

Grouped Project categories are shown in [Table 6](#). By listing these project types in the TIP, planning process stakeholders and the general public are informed of the types of potential projects that may be added to the TIP in the future via the streamlined Administrative Modification process. TIP actions for these projects will not require additional public review, demonstration of fiscal constraint in the local TIP, or an air-quality conformity determination (if applicable).

The dollar amounts shown in the Grouped Projects [Table 6](#) are illustrative (and minimal) project cost amounts based on past experience and reasonableness. These numbers are included per recommended guidance and should not be interpreted as expected project awards or expenditures for any particular year. Similarly, the Grouped Projects line item in [Table 7](#) should be interpreted in the same way. Rather than future commitments of funding, these numbers are illustrative of a reasonable level of total funding for the various types of grouped projects that, potentially, could be approved within a particular year.

**[Table 6](#) – Grouped Projects** – Illustrative list of the amount of funding that the MPO may potentially receive for any Grouped Project type based on past experience and reasonableness.

**[Table 6a](#) – Grouped Projects Selected** – Grouped Projects that have been identified and funded in the Lexington Area through the various processes described above.

## 4.5 Funding Summary Table

A summary table that shows the total of all TIP funding and revenue grouped by funding source category and year is provided in [Table 7](#). This table demonstrates fiscal constraint for all funding types.

**[Table 7](#) – TIP Summary Table**

## 4.6 Project Reference Table

An alphabetical index of all projects, their Item Number and the funding tables on which they appear in the TIP can be found on [page 21](#). Projects that appear on this table more than once have multiple funding sources that are being utilized for the project. This allows the reader to find projects by name, rather than Item Number. Tables 1-6 above are arranged by Item Number. This number is assigned by KYTC and used by the MPO as a project identification reference number for tracking purposes.

[Project Reference Table](#) – Alphabetical summary of all projects and table reference.

## 4.7 Project Map

The project map that depicts the FY 2017-2020 TIP project locations, shown by funding type, is on the following page in [Figure 4.1](#).

# Project Map

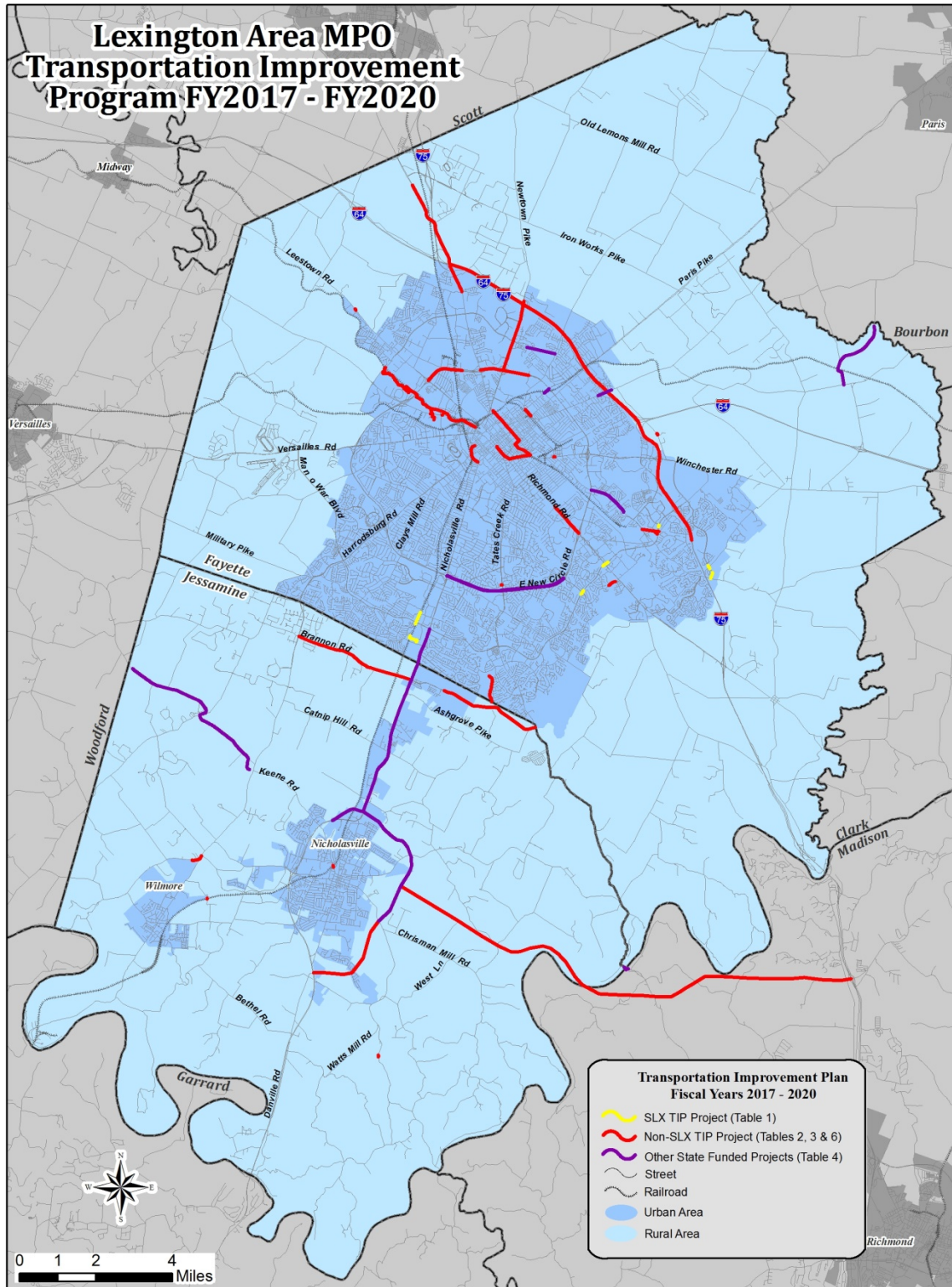


Figure 4.1 TIP Projects



# Project Reference Table

An alphabetical index of all projects, their Item Number and the funding tables on which they appear in the TIP. Projects that appear on this table more than once utilize multiple funding sources. This Table allows the reader to find projects by name, rather than Item Number.

Projects in Alphabetical Order				
Description	Project ID	Sponsor	Facility	Table #
<b>4th Street Corridor improvements</b>		LFUCG/Transy	CS 1375	6A
<b>Armstrong Mill sidewalks</b>	7-3213.00	LFUCG	CS 3037	6A
<b>Beaumont YMCA Trail</b>	7-3218.00	LFUCG		6A
<b>Brannon Rd - US 68 to US 27</b>	7-414.00	KYTC	KY 1980	2 & 3
<b>Brighton Rail Trail Bridge Phase IV</b>	7-3717.00	LFUCG	Trail	6A
<b>Citation Trail</b>	7-3223.00	LFUCG	Trail	6A
<b>Clays Mill Rd</b> widen from Harrodsburg Rd to New Circle Rd	7-224.10	LFUCG	CS - 4174	1
<b>Compressed natural gas (CNG) fueling station</b>		LFUCG		6A
<b>CR-1121</b> Repair McCall's Mill Rd. bridge over Boggs Creek	7-10009.00	KYTC	CR-1121	2
<b>CR-1238</b> replace bridge over NS System	7-1144.00	KYTC	CR-1238	2
<b>East Brannon Rd</b> extend to Tates Creek Rd (KY 1974)	7-376.00	KYTC	CS 1486	3
<b>East High Shared Use Trail</b>	7-3214.00	Nich.	Trail	6A
<b>East Nicholasville Bypass</b> Section II	7-87.50 & .51	KYTC	New Route	2
<b>Elizabeth Street sidewalks</b>	7-3217.00	LFUCG	CS 4284	6A
<b>Fayette County Elementary School Zone Enhancements</b>		LFUCG		6A
<b>Fiber Optic Cable</b>		LFUCG		6A
<b>Hume Rd</b> replace bridge over branch of North Elkhorn Creek	7-1141.00	KYTC	CR 1001	2
<b>I-64</b> Address pavement condition both directions - MP 73.940 - 74.729	7-20009.00	KYTC	I-64	2
<b>I-64/I-75</b> widen to 8 lanes - Bryan Station overpass to northern split	7-8909.00	KYTC	I-75	2
<b>I-64/I-75</b> widen to 8 lanes - C&O RR bridge to Bryan Station overpass	7-8910.00	KYTC	I-75	2
<b>I-75</b> Address pavement condition both directions - MP 111.82 to 120.792	7-20015.00	KYTC	I-75	2
<b>I-75 Connector</b>	7-8404.00	KYTC	US 27	2
<b>I-75 SB Exit Ramp at Man O' War Blvd.</b>	7-227.13	KYTC	I-75	1
<b>ITN Bluegrass</b> – Transportation for over 60 and visually impaired				
<b>KY 1268</b> Repair bridge over Hickman Creek	7-10011.00	KYTC	KY 1268	2
<b>KY 169 Safety Improvements</b>	7-931.00	KYTC	KY 169	6A
<b>KY 1968 Improvements</b>	7-944.00	KYTC	KY 1968	6A
<b>KY 1974 Safety Improvements</b>	7-9003.30	KYTC	KY 1974	6A
<b>KY 29 N of Wilmore</b>	7-915.00	KYTC	US 68	2
<b>KY 39</b> replace bridge over Hickman Creek	7-1136.00	KYTC	KY 39	2
<b>L&amp;N RR bridge overpass on North Broadway</b>	7-412.00	KYTC	US 27	4
<b>Legacy Trail Phase III</b>	7-3103.00	LFUCG		6A
<b>Lextran Buses</b> - Purchase 6 CNG buses		Lextran		6A
<b>Lextran Buses</b> - Purchase 12 electric buses and charging stations		Lextran		6A
<b>Lextran Bus Stops</b> – Improve Access		Lextran		6A
<b>Liberty Rd</b>	7-8902.00	KYTC / LFUCG	KY 1927	4
<b>Malabu Dr</b> replace bridge over branch of Hickman Creek	7-1132.00	KYTC	CS 3605	2
<b>Man O' War Blvd at Alumni Dr</b>	7-427.00	LFUCG	CS 4524	1
<b>Man O' War Blvd at Pink Pigeon Pkwy</b>	7-426.00	LFUCG	CS 4524	1
<b>Man O' War Blvd at Richmond Road</b>	7-428.00	LFUCG	CS 4524	1
<b>Manchester St left turn lanes at Forbes Rd</b>	7-3718.00	LFUCG		6A
<b>Mercer Rd at Greendale Road Turn Lanes</b>		LFUCG	CS 1257	6A
<b>Mt. Tabor Rd Multimodal Improvements</b>		LFUCG	CS 3663	6A
<b>New Circle Rd</b> sound barriers	7-8801.00	KYTC	KY 4	4

## Projects in Alphabetical Order

Description	Project ID	Sponsor	Facility	Table #
<b>New Circle Road</b> from Leestown Rd to near Georgetown Rd.	7-113.02	KYTC	KY 4	2
<b>New Circle Road</b> widening from Georgetown Rd. to Boardwalk	7-366.00 – 0.3	KYTC	KY 4	2
<b>Newtown Pike</b> six-lane from KY 4 to I-75	7-252.00	KYTC	KY 922	2
<b>Newtown Pk</b> – turn lane at Pintail	7-413.00	KYTC	KY 922	2
<b>Newtown Pk. Extension</b> - Priority 4 (Scott St. Connector)	7-593.30	KYTC / LFUCG	KY 922	3
<b>Old Frankfort Pike Scenic Byway Viewing Area</b>	7-3201.00	LFUCG	KY 1681	6A
<b>Old Frankfort Pike Corridor Management Plan</b>		Lex-Frank SCI	KY 1681	6A
<b>Old Todds Road Sidewalks</b>	7-3221.00	LFUCG	CS 2690	6A
<b>Oxford Circle Sidewalks</b>	7-3220.00	LFUCG	CS 4634	6A
<b>Pink Pigeon/MOW Safety Improvements</b>	7-9003.20	KYTC	CS 2540	6A
<b>Pleasant Ridge/MOW Safety Improvements</b>	7-9003.40	KYTC	CS 4524	6A
<b>Polo Club Blvd</b>	7-8507.00	LFUCG	New Blvd	1
<b>Richmond Rd (US 25) access management</b>	7-9002.00	KYTC		6A
<b>RJ Corman Railroad Group</b>		Jess. Co. Fis Ct.		6A
<b>Rosemont Garden Sidewalks</b>	7-3219.00	LFUCG	CS 4735	6A
<b>South Elkhorn Trail</b> Section 2	7-229.20	LFUCG	Trail	1
<b>South Elkhorn Trail</b> Section 3	7-229.30	LFUCG	Trail	1
<b>South Elkhorn Trail</b>	7-3222.00	LFUCG	Trail	6A
<b>Squires Rd sidewalk</b>		LFUCG	CS 3886	6A
<b>Town Branch Commons - Midland Section</b>	7-3714.00	LFUCG	US 60	6A
<b>Town Branch Commons - Vine St. Section</b>	7-3207.00	LFUCG	US 60	6A
<b>Town Branch Trail</b> Crossing at Old Frankfort Pk	7-3702.00	LFUCG	Trail	6A
<b>Town Branch Trail Phase 3</b>	7-3224.00	LFUCG	Trail	6A
<b>Town Branch Trail Phase 4</b>	7-3708.00	LFUCG	Trail	6A
<b>Town Branch Trail Phase 5</b>	7-3709.00	LFUCG	Trail	6A
<b>Town Branch Trail Phase 6</b>	7-3710.00	LFUCG	Trail	6A
<b>US 169 (North 3rd St)</b> replace railroad bridge	7-8851.00	KYTC	KY 169	2
<b>US 25 (Georgetown Rd)</b>	7-122.10	KYTC	US 25	3
<b>US 25 Safety Improvements</b>	7-9003.10	KYTC	US 25	6A
<b>US 27 &amp; Cooper/Waller Safety Improvements</b>	7-9003.60	KYTC	CS 3223	6A
<b>US 421</b> Address pavement condition	7-20016.00	KYTC	US 421	2
<b>US 421</b> replace bridge over fork of Town Branch	7-1129.00	KYTC	US 421	2
<b>US 60 (Winchester Rd)</b> Scoping Study	7-8340.00	KYTC	US 60	4
<b>US 68</b> – Safety Improvements near Mercer Co Line	7-09009.00	KYTC	US 68	6A
<b>Valley View Ferry</b> - Operations	7-357.14 - .19	KYTC	NA	4
<b>Valley View Ferry</b> - ramp, parking area and retaining wall		LFUCG	NA	6A
<b>Valley View Ferry</b> – Restore car barge and pulley system		FBP	NA	6A
<b>Various Continuing Programs</b>	7-227.00	LFUCG	NA	1
<b>Virginia Avenue Turn Lane at US 27</b>	7-9003.00	KYTC	CS 4904	6A
<b>West Hickman Trail South</b>	7-3713.00	LFUCG	Trail	6A
<b>West High Shared Use Trail</b>	7-3215.00	Nich.	Trail	6A
<b>West Loudon Improvements</b> - S. Broadway to Limestone	7-3203.00	LFUCG		6A
<b>Wheels Vehicles</b> - Purchase 7 vehicles		WHEELS		6A
<b>Wilson Downing sidewalks</b>	7-3216	LFUCG	CS 7038	6A
<b>Wilson Downing Rd Bridge Replacement</b>	7-1145.00	LFUCG	CS 7038	1
<b>Winchester Rd/E. 7th St./Liberty Rd intersection improvements</b>	7-3204.00	LFUCG		6A

# PROJECT TABLES

**Table 1 – SLX Projects (\$1,000) (Federal-aid Highway projects with a 20 % match)**

Table 1 - SLX Projects (F-Fayette; J-Jessamine)							TIP Years					2017 - 2020			
Project ID	Sponsor	Facility	Description	Fund Type	Phase	Pre 2017	FY 2017	FY 2018	FY 2019	FY 2020	Future	Total Cost	Federal Funds	State Funds	Local Funds
F 224.10	LFUCG	CS 4174	Clays Mill Rd widen from Harrodsburg Rd to New Circle Rd - Section 1; Length=2.0 mi (Mod #10, Mod #20 see CMAQ funded portion in Table 6A) (Mod #10 & #20)	SLX	D	\$1,400						\$1,400	\$224		\$56
					R										
					U				\$280						
					C										
					Total	\$1,400	\$0	\$0	\$280	\$0	\$0	\$1,680	\$224	\$0	\$56
F 227.00	LFUCG	NA	Various Continuing Programs [Rideshare/Mobility (MB), Air Quality & Cong. Management (CM), Bike/Ped Planning (BP), Traffic Signal Upgrades (ITS)]	SLX	MB	\$128	\$128	\$128	\$128	\$128	\$128	\$768	\$410		\$102
					CM	\$152	\$152	\$152	\$152	\$152	\$152	\$912	\$486		\$122
					BP	\$66	\$66	\$66	\$66	\$66	\$66	\$396	\$211		\$53
					ITS	\$575	\$575	\$575	\$600	\$600	\$600	\$3,525	\$1,880		\$470
					Total	\$921	\$921	\$921	\$946	\$946	\$946	\$5,601	\$2,987	\$0	\$747
F 229.20	LFUCG	NA	South Elkhorn Trail (Section 2): From Joseph Bryan Way through NS RR tunnel to Waveland; Length=0.3 mi (Mod #10)	SLX	D										
					R										
					U										
					C				\$400			\$400	\$320		\$80
					Total	\$0	\$0	\$0	\$400	\$0	\$0	\$400	\$320	\$0	\$80
F 229.30	LFUCG	NA	South Elkhorn Trail (Section 3): From Lochdale Terrace extending N under Man O' War Blvd to Shillito Park; Length=0.3 mi (Mod #10)	SLX	D										
					R										
					U										
					C				\$625			\$625	\$500		\$125
					Total	\$0	\$0	\$0	\$625	\$0	\$0	\$625	\$500	\$0	\$125
F 427.00	LFUCG	CS 4524	Man O' War Blvd at Alumni Dr turn lane improvement	SLX	D	\$18						\$18	\$580		\$145
					R/U										
					C		\$725					\$725			
					Total	\$18	\$725	\$0	\$0	\$0	\$0	\$743	\$580	\$0	\$145

Table 1 - SLX Projects (F-Fayette; J-Jessamine)							TIP Years					2017 - 2020			
Project ID	Sponsor	Facility	Description	Fund Type	Phase	Pre 2017	FY 2017	FY 2018	FY 2019	FY 2020	Future	Total Cost	Federal Funds	State Funds	Local Funds
F 428.00	LFUCG	CS 4524	Man O' War Blvd at Richmond Road turn lane improvement	SLX	D	\$40						\$40			
					R/U										
					C			\$262				\$262	\$210		\$52
					Total	\$40	\$0	\$262	\$0	\$0	\$0	\$302	\$210	\$0	\$52
F 9002.00	KYTC	US 25	Richmond Rd (US 25) access management and offset turn lanes from New Circle Rd to Shriners Ln including improvements to approaches at Lakeshore & Fontaine (Mod #2 - see HSIP funded portion in Table 6A)	SLX	D										
					R										
					U										
					C		\$71					\$71	\$57		\$14
					Total	\$0	\$71	\$0	\$0	\$0	\$0	\$71	\$57	\$0	\$14
F 8507.00	LFUCG	CS 2548	Polo Club Blvd complete construction at Deerhaven Lane and Todds Rd; Length=0.2 mi (Mod #10, #15 & #19)	SLX	D										
					R										
					U										
					C			\$2,892				\$2,892	\$2,892		
					Total	\$0	\$0	\$0	\$2,892	\$0	\$0	\$2,892	\$2,892	\$0	\$0
F 1145.00	LFUCG	CS 7038	Wilson Downing Rd Bridge Replacement - replace deteriorated bridge section across West Hickman Creek along west bound lane of Wilson Downing Rd (Mod #5)	SLX	D							\$75	\$60		\$15
					R										
					U										
					C			\$275				\$275	\$220		\$55
					Total	\$0	\$0	\$350	\$0	\$0	\$0	\$350	\$280	\$0	\$70
F 227.13	LFUCG	I-75	I-75 SB Exit Ramp at Man O' War Blvd. - safety project to widen I-75 SB exit ramp at Man O' War to construct left turn lanes and install traffic signal SPP funded phases in Table 3. (Mod #17)	SLX	D										
					R										
					U										
					C			\$500				\$500	\$500		
					Total	\$0	\$0	\$0	\$500	\$0	\$0	\$50	\$500	\$0	\$0
F 8902.00	KYTC	KY 1927	Liberty Rd extend the existing 4-lane on Liberty Rd from Graftons Mill Ln (MP 1.145) to New Circle Rd (MP 0.0) and improve intersection with New Circle Rd; Length=1.1 mi (Amend #1) (Mod #10 and Mod #20 - see STP funded portion in Table 2)	SLX	D										
					R										
					U					\$4,300		\$4,300	\$4,300		
					C					\$4,300		\$4,300	\$4,300		
					Total	\$0	\$0	\$0	\$0	\$8,600	\$0	\$8,600	\$8,600	\$0	\$0

F 113.02	KYTC	KY 4	<b>New Circle Road:</b> Rehab and widening from Leestown Rd to near Georgetown Rd. NH funded portion in Table 2. (Mod #10, #20 & #22)	SLX	D					\$1,300			\$1,300	\$1,300		
					R											
					U					\$3,000			\$3,000	\$3,000		
					C											
					Total	\$0	\$0	\$0	\$0	\$1,300	\$3,000	\$0	\$4,300	\$4,300	\$0	\$0
J 414.00	KYTC	KY 1980	<b>West Brannon Rd:</b> Improve geometrics, typical section, and roadway hazards from Harrodsburg Rd to Nicholasville Rd. STP/SPP funded phases in Tables 2/3. (Mod #10 & #20)	SLX	D								\$2,000	\$2,000		
					R											
					U											
					C											
					Total	\$0	\$0	\$0	\$0	\$0	\$2,000	\$0	\$2,000	\$2,000	\$0	\$0
F 3219	LFUCG	CS 4735	<b>Rosemont Garden Sidewalks:</b> Construct sidewalk along three blocks just east of Southland Dr. TAP funded phases in Table 6A. (Mod #1 & #22)	SLX	R								\$30	\$30	\$24	\$6
					C								\$360	\$360	\$288	\$72
					Total	\$0	\$0	\$0	\$0	\$0	\$390	\$0	\$390	\$312	\$0	\$78
F 3714.00	KYTC	US 60	<b>Town Branch Commons - Midland Section:</b> Construct bike/ped facilities from Vine/Quality St to Third St at the Legacy Trail. CMAQ funded phases in Table 6A. (Mod #9 & #25)	SLX	C								\$625	\$625	\$500	\$125
					Total	\$0	\$0	\$0	\$0	\$0	\$625	\$0	\$625	\$500	\$125	
F 3207.00	LFUCG	US 60	<b>Town Branch Commons - Vine St. Section:</b> Construct bike/ped facility from Limestone to Quality St. TAP funded phases in Table 6A. (Mod #9 & #25)	SLX	C								\$625	\$625	\$500	\$125
					Total	\$0	\$0	\$0	\$0	\$0	\$625	\$0	\$625	\$500	\$125	
					Total	\$0	\$0	\$0	\$0	\$0	\$625	\$0	\$625	\$500	\$125	
F 3717.00	LFUCG	US 60	<b>Brighton Rail Trail Bridge Phase IV</b> construct bridge and trail connections across Man O' War Blvd between Helmsdale Pl and Pink Pigeon Pkwy CMAQ funded phases in Table 1. <b>Mod #29</b>	SLX	D											
					R											
					U											
					C								\$913	\$913	\$913	
					Total	\$0	\$0	\$0	\$0	\$0	\$913	\$0	\$913	\$913	\$0	

Table 1 - SLX Projects (F-Fayette; J-Jessamine)							TIP Years				2017 - 2020				
Project ID	Sponsor	Facility	Description	Fund Type	Phase	Pre 2017	FY 2017	FY 2018	FY 2019	FY 2020	Future	Total Cost	Federal Funds	State Funds	Local Funds
J 8851.00	KYTC	KY 169	US 169 (North 3rd St) replace railroad bridge between Meadowlark Ln and Ilhardt Ave; Length=0.1 mi BR funded phases in Table 2. (Mod #10 & #29)	SLX	C					\$185		\$185	\$148		\$37
					Total	\$0	\$0	\$0	\$0	\$185	\$0	\$185	\$148	\$0	\$37

<b>Totals:</b>	<b>\$2,379</b>	<b>\$1,717</b>	<b>\$1,533</b>	<b>\$6,943</b>	<b>\$17,284</b>	<b>\$946</b>	<b>\$30,802</b>	<b>\$25,823</b>	<b>\$50</b>	<b>\$1,654</b>
----------------	----------------	----------------	----------------	----------------	-----------------	--------------	-----------------	-----------------	-------------	----------------

**Table 2 – NON-SLX Projects (\$1,000) (Federal-aid Highway projects)**

Table 2 - Non SLX Projects (F-Fayette; J-Jessamine)							TIP Years						2017 - 2020		
Project ID	Sponsor	Facility	Description	Fund Type	Phase	Pre 2017	FY 2017	FY 2018	FY 2019	FY 2020	Future	Total Cost	Federal Funds	State Funds	Local Funds
J 87.50	KYTC	New Route	East Nicholasville Bypass Section II from KY 39 to US 27 S of Nicholasville; Length=4.3 mi	STP	D R U C			\$12,500				\$12,500	\$12,500		
						Total	\$0	\$0	\$12,500	\$0	\$0	\$0	\$12,500	\$12,500	\$0
J 87.51	KYTC	New Route	East Nicholasville Bypass Section II from KY 39 to US 27 S of Nicholasville; Length=4.3 mi	STP	D R U C				\$10,000			\$10,000	\$10,000		
						Total	\$0	\$0	\$0	\$10,000	\$0	\$0	\$10,000	\$10,000	\$0
F 113.02	KYTC	KY 4	New Circle Road rehab and widening from Leestown Rd to near Georgetown Rd.; Length=3.4 mi (Mod #10, #20 & #22 – see SLX funded portion in Table 1)	NH	D R U C							\$11,780	\$11,780		
						Total	\$0	\$0	\$0	\$0	\$0	\$11,780	\$11,780	\$0	\$0
F 252.00	KYTC	KY 922	Newtown Pike six-lane from KY 4 to I-75; Length=1.8 mi (Mod #10)	STP	D R U C				\$2,000			\$2,000	\$2,000		
									\$3,000			\$3,000	\$3,000		
Total						\$0	\$0	\$0	\$5,000	\$0	\$15,000	\$20,000	\$5,000	\$0	\$0
F 366.00 - .03	KYTC	KY 4	New Circle Road widening from Georgetown Rd. to Boardwalk including Newtown interchange frontage roads and ramps at Georgetown; Length=1.3 mi (Mod #6 - Rev.)	NH	D R U C			\$45,900				\$45,900	\$45,900		
						Total	\$0	\$0	\$45,900	\$0	\$0	\$0	\$45,900	\$45,900	\$0

Table 2 - Non SLX Projects (F-Fayette; J-Jessamine)							TIP Years				2017 - 2020				
Project ID	Sponsor	Facility	Description	Fund Type	Phase	Pre 2017	FY 2017	FY 2018	FY 2019	FY 2020	Future	Total Cost	Federal Funds	State Funds	Local Funds
F 413.00	KYTC	KY 922	Newtown Pk (KY 922) construct an additional lane from Pintail Dr (main entrance to Marriott Griffin Gate) to SB I-75 entrance ramp; Length=0.3 mi	NH	D	\$1,500						\$1,500			
					R	\$500					\$500				
					C		\$800					\$800	\$800		
					Total	\$2,000	\$800	\$0	\$0	\$0	\$0	\$2,800	\$800	\$0	\$0
J 915.00	KYTC	US 68	KY 29 N of Wilmore reconstruct intersection with US 68; Length=0.7 mi (Mod #10)	STP	D										
					R		\$2,630						\$2,630	\$2,630	
					U				\$650			\$650	\$650		
					C					\$1,080		\$1,080	\$1,080		
					Total	\$0	\$2,630	\$0	\$650	\$1,080	\$0	\$4,360	\$4,360	\$0	\$0
F 1129.00	KYTC	US 421	Leestown Rd. - Replace bridge over fork of Town Branch at intersection with Bracktown Rd; Length=0.1 mi (Mod #10)	BR	D	\$300						\$300			
					R	\$55					\$55				
					U	\$350						\$350			
					C				\$800			\$800	\$800		
					Total	\$705	\$0	\$0	\$800	\$0	\$0	\$1,505	\$800	\$0	\$0
F 1132.00	KYTC	CS 3605	Malabu Dr replace bridge over branch of Hickman Creek at Tates Creek Rd; Length=0.1 mi	BR	D	\$300						\$300			
					R	\$70					\$70				
					U	\$110						\$110			
					C			\$427				\$427	\$427		
					Total	\$480	\$0	\$427	\$0	\$0	\$0	\$907	\$427	\$0	\$0
J 1136.00	KYTC	KY 39	Sulphur Well Pike replace bridge over Hickman Creek at Black Bridge 1.3 mi north of KY 1268; Length=0.1 mi (Mod #10)	BR	D				\$350			\$350	\$350		
					R										
					U										
					C					\$1,365		\$1,365	\$1,365		
					Total	\$0	\$0	\$0	\$350	\$1,365	\$0	\$1,715	\$1,715	\$0	\$0



Table 2 - Non SLX Projects (F-Fayette; J-Jessamine)							TIP Years					2017 - 2020			
Project ID	Sponsor	Facility	Description	Fund Type	Phase	Pre 2017	FY 2017	FY 2018	FY 2019	FY 2020	Future	Total Cost	Federal Funds	State Funds	Local Funds
F 1141.00	KYTC	CR 1001	Hume Rd replace bridge over branch of North Elkhorn Creek 0.7 mi NW of US 60; Length=0.1 mi (Mod #10)	BR	D R U C				\$210			\$210	\$210		
						Total	\$0	\$0	\$0	\$210	\$0	\$735	\$945	\$210	\$0
J 1144.00	KYTC	CR 1238	Drake Lane - replace bridge over NS System; Length=0.1 mi (Mod #10)	BR	D R U C				\$260			\$260	\$260		
						Total	\$0	\$0	\$0	\$260	\$805	\$0	\$1,065	\$1,065	\$0
J 8404.00	KYTC	New Road	I-75 Connector construct a new 4-lane connector between US 27 and I-75; Length=13.0 mi	STP	D R U C		\$2,000					\$2,000	\$2,000		
						Total	\$0	\$2,000	\$0	\$10,000	\$3,000	\$0	\$15,000	\$15,000	\$0
J 8851.00	KYTC	KY 169	US 169 (North 3rd St) replace railroad bridge between Meadowlark Ln and Ilhardt Ave; Length=0.1 mi SLX funded phases in Table 1. (Mod #10 & #29)	BR	D R U C	\$500						\$500			
						Total	\$500	\$0	\$0	\$0	\$1,500	\$0	\$2,000	\$1,500	\$0
F 8902.00	KYTC	KY-1927	Liberty Rd extend the existing 4-lane on Liberty Rd from Graftons Mill Ln (MP 1.145) to New Circle Rd (MP 0.0) and improve intersection with New Circle Rd; Length=1.1 mi (Amend #1) (Mod #10 and Mod #20 – see SLX funded portion in Table 1)	STP	D R U C		\$1,600					\$1,600	\$1,600		
						Total	\$0	\$1,600	\$0	\$0	\$0	\$6,190	\$7,790	\$1,600	\$0
F 8909.00	KYTC	I-75	I-64/I-75 reduce congestion from southern split (MP 111.00) to the northern split (MP 117.67) (16CCN); length=6.7 mi (Mod#7) (Mod #10)	IM	D R U C			\$1,750				\$1,750	\$1,750		
						Total	\$0	\$0	\$1,750	\$0	\$0	\$27,000	\$28,750	\$1,750	\$0

Table 2 - Non SLX Projects (F-Fayette; J-Jessamine)							TIP Years						2017 - 2020			
Project ID	Sponsor	Facility	Description	Fund Type	Phase	Pre 2017	FY 2017	FY 2018	FY 2019	FY 2020	Future	Total Cost	Federal Funds	State Funds	Local Funds	
F 10009.00	KYTC	CR 1121	McCall's Mill Rd. – Repair bridge over Boggs Creek (Mod #10)	BR	D R U C				\$158			\$158	\$158			
										\$360		\$360	\$360			
						Total	\$0	\$0	\$0	\$158	\$360	\$0	\$518	\$518	\$0	\$0
J 10011.00	KYTC	KY 1268	Sugar Creek Pike - Repair bridge over Hickman Creek (Mod #10)	BR	D R U C				\$308			\$308	\$308			
										\$1,232		\$1,232	\$1,232			
						Total	\$0	\$0	\$0	\$308	\$1,232	\$0	\$1,540	\$1,540	\$0	\$0
F 20009.00	KYTC	I-64	I-64 Address pavement condition both directions from MP 73.94 to MP 74.729 Length = 0.79 mi (Mod #10)	PM	D R U C				\$30			\$30	\$30			
										\$3,000		\$3,000	\$3,000			
						Total	\$0	\$0	\$0	\$3,030	\$0	\$0	\$3,030	\$3,030	\$0	\$0
F 20015.00	KYTC	I-75	I-75 Address pavement condition both directions from MP 111.82 to MP 120.792 Length = 8.97 mi (Mod #10)	PM	D R U C					\$1,080		\$1,080	\$1,080			
										\$10,800		\$10,800	\$10,800			
						Total	\$0	\$0	\$0	\$0	\$11,880	\$0	\$11,880	\$11,880	\$0	\$0
F 20016.00	KYTC	US 421	Leestown Rd. - Address pavement condition (Mod #10)	PM	D R U C			\$50				\$50	\$50			
										\$500		\$500	\$500			
						Total	\$0	\$0	\$550	\$0	\$0	\$0	\$550	\$550	\$0	\$0
<b>Totals:</b>							<b>\$3,685</b>	<b>\$7,030</b>	<b>\$61,127</b>	<b>\$30,766</b>	<b>\$33,002</b>	<b>\$48,9255</b>	<b>\$184,535</b>	<b>\$131,925</b>	<b>\$0</b>	<b>\$0</b>

**Table 3 – Regionally Significant State Funded Projects (\$1,000)**

Table 3 - Regionally Significant State Funded Projects (F-Fayette; J-Jessamine)						TIP Years						2017 - 2020								
Project ID	Sponsor	Facility	Description	Fund Type	Phase	Pre 2017	FY 2017	FY 2018	FY 2019	FY 2020	Future	Total Cost	Federal Funds	State Funds	Local Funds					
F 122.10	KYTC	US 25	US 25 (Georgetown Rd) reconstruct/widen from Spurr Rd. south of I-75 to 1400 ft. south of Ironworks Rd; Length=3.2 mi	SPP	D															
					R		\$12,170								\$12,170		\$12,170			
					U		\$3,520											\$3,520		\$3,520
					C			\$19,280										\$19,280		\$19,280
				Total		\$0	\$15,690	\$19,280	\$0	\$0	\$0	\$34,970	\$0	\$34,970	\$0					
J 376.00	KYTC	CS 1486	East Brannon Rd extend from exiting road east of Lauderdale Dr to Tates Creek Rd (KY 1974); Length=2.5 mi	SPP	D															
					R	\$3,000									\$3,000					
					U	\$4,980										\$4,980				
					C	\$14,400										\$14,400				
				Total	\$22,380	\$0	\$0	\$0	\$0	\$0	\$22,380	\$0	\$0	\$0						
J 414.00	KYTC	KY 1980	West Brannon Rd: Improve geometrics, typical section, and roadway hazards from Harrodsburg Rd to Nicholasville Rd. SLX/STP funded phases in Tables 1/2. (Mod #10 and Mod #20)	SPP	D															
					R															
					U									\$5,000	\$5,000					
					C									\$12,000	\$12,000					
				Total	\$0	\$0	\$0	\$0	\$0	\$17,000	\$17,000	\$0	\$0	\$0						
F 593.30	KYTC / LFUCG	KY 922	Newtown Pk. Extension - Priority 4: From existing Newtown & Patterson to S. Limestone (Phase III - Scott St. Connector).	SPP	D															
					R		\$8,657								\$8,657		\$8,657			
					U		\$3,468									\$3,468		\$3,468		
					C			\$10,755								\$10,755		\$10,755		
				Total	\$0	\$12,125	\$10,755	\$0	\$0	\$0	\$22,880	\$0	\$22,880	\$0						
F 227.13	KYTC	I-75	I-75 SB Exit Ramp at Man O' War Blvd.: Safety project to widen I-75 SB exit ramp at Man O' War to add left turn lanes and install traffic signal. SLX funded phases in Table 1. (Mod #17)	SPP	D				\$50			\$50								
					R															
					U															
					C															
				Total	\$0	\$0	\$0	\$50	\$0	\$0	\$50	\$0	\$50	\$0						
<b>Totals</b>						<b>\$22,380</b>	<b>\$27,815</b>	<b>\$30,035</b>	<b>\$50</b>	<b>\$0</b>	<b>\$17,000</b>	<b>\$97,280</b>	<b>\$0</b>	<b>\$57,900</b>	<b>\$0</b>					

**Table 4 – Informational Supplement – Unfunded and/or Non-Regionally Significant State Projects (\$1,000)**

Table 4 – Informational Supplement; Unfunded and/or Non-Regionally Significant State Projects (F-Fayette; J-Jessamine)							TIP Years						2017 - 2020		
Project ID	Sponsor	Facility	Description	Fund Type	Phase	Pre 2017	FY 2017	FY 2018	FY 2019	FY 2020	Future	Total Cost	Federal Funds	State Funds	Local Funds
F 357.14 - 357.19	KYTC	KY 169	Valley View Ferry at KY River operations	SPP	D										
					R										
					U		\$330	\$330	\$330	\$330	\$660	\$1,980		\$1,320	
					C										
					Total	\$0	\$330	\$330	\$330	\$330	\$660	\$1,980	\$0	\$1,320	\$0
F 412.00	KYTC	US 27	L&N RR bridge overpass replace, improve drainage and typical section on North Broadway; Length=0.3 mi (Mod #10)	SPP	D					\$2,440					
					R										
					U						\$1,550	\$2,440		\$2,440	
					C						\$12,040	\$12,040			
					Total	\$0	\$0	\$0	\$0	\$2,440	\$13,590	\$16,030	\$0	\$2,440	\$0
F 8340.00	KYTC	US 60	US 60 (Winchester Rd) Scoping Study to reconstruct/widen to 4 lanes; Length=0.9 mi (Mod #10)	SPP	P						\$280	\$280			
					R										
					U										
					C										
					Total	\$0	\$0	\$0	\$0	\$0	\$280	\$280	\$0	\$0	\$0
F 8801.00	KYTC	KY 4	New Circle Rd sound barriers along outer loop between Bates Creek Rd and Nicholasville Rd; Length=1.2 mi (Mod #10)	SPP	D										
					R										
					U										
					C					\$2,300	\$2,300	\$4,600		\$2,300	
					Total	\$0	\$0	\$0	\$0	\$2,300	\$2,300	\$4,600	\$0	\$2,300	\$0
<b>Totals:</b>						<b>\$0</b>	<b>\$330</b>	<b>\$330</b>	<b>\$330</b>	<b>\$5,070</b>	<b>\$16,830</b>	<b>\$22,890</b>	<b>\$0</b>	<b>\$6,060</b>	<b>\$0</b>

**Table 5 – Federal Transit Administration Projects (\$1,000)**

Table 5 - Federal Transit Administration Projects							TIP Years					2017 - 2020			
Project ID	Sponsor	Facility	Description	Fund Type	Phase	Pre 2017	FY 2017	FY 2018	FY 2019	FY 2020	Future	Total Cost	Federal Funds	State Funds	Local Funds
	Lextran		Lextran Urbanized Area Formula Grant (capital, planning, JARC, operating expenditures)	5307	Bus: Support Equipment & Facilities		\$500	\$505	\$510	\$515	\$520	\$2,550	\$1,624		\$406
					Other Capital Items (bus) - Preventative Maintenance		\$2,600	\$2,626	\$2,652	\$2,679	\$2,706	\$13,263	\$8,446		\$2,111
					Bus Associated Transit Improvements		\$85	\$86	\$87	\$88	\$88	\$434	\$277		\$69
					Other Capital Items (bus) - ADA Paratransit Service		\$2,536	\$2,561	\$2,587	\$2,613	\$2,639	\$12,936	\$8,238		\$2,059
					<b>Total</b>		<b>\$5,721</b>	<b>\$5,778</b>	<b>\$5,836</b>	<b>\$5,895</b>	<b>\$5,953</b>	<b>\$29,183</b>	<b>\$18,584</b>	<b>\$0</b>	<b>\$4,646</b>
	Lextran		Lextran Elderly and Disability Transportation Services - Wheels expenditures	5310	New Freedom Capital Assistance		\$127	\$128	\$130	\$131			\$413		\$103
	Lextran		Lextran Buses and Bus Facilities	5339	Bus: 40' CNG bus		\$585	\$585	\$585	\$585	\$585	\$2,925	\$1,872		\$468
					Bus Shelters		\$40	\$40	\$40	\$40		\$160	\$128		\$32
					<b>Total</b>		<b>\$625</b>	<b>\$625</b>	<b>\$625</b>	<b>\$625</b>	<b>\$585</b>	<b>\$3,085</b>	<b>\$2,000</b>	<b>\$0</b>	<b>\$500</b>
	BUS		Bluegrass Ultra-transit Service in Jessamine Co. expenditures	5310	Transit Capital Improvements		\$100	\$100	\$100	\$100		\$400	\$320	\$40	\$40
	BUS		Bluegrass Ultra-transit Service in Jessamine Co. expenditures	5311	Operating (other than maintenance)		\$145	\$145	\$145	\$145		\$580	\$464		\$116
					Maintenance		\$28	\$29	\$30	\$32		\$119	\$95		\$24
					<b>Total</b>		<b>\$173</b>	<b>\$174</b>	<b>\$175</b>	<b>\$177</b>	<b>\$0</b>	<b>\$699</b>	<b>\$559</b>	<b>\$0</b>	<b>\$140</b>
	BUS		Bluegrass Ultra-transit Service in Jessamine Co. expenditures	5339			\$10	\$10	\$10	\$10		\$40	\$40		
<b>Totals</b>						<b>\$0</b>	<b>\$6,756</b>	<b>\$6,815</b>	<b>\$6,876</b>	<b>\$6,938</b>	<b>\$6,538</b>	<b>\$33,407</b>	<b>\$21,916</b>	<b>\$40</b>	<b>\$5,429</b>

**Table 6 – Grouped Projects (\$1,000)**

Table 6 - Grouped Projects *	TIP Years			
	2017	2018	2019	2020
HSIP - High Cost Safety Improvements	\$100,000	\$100,000	\$100,000	\$100,000
HSIP - Low Cost Safety Improvements	\$50,000	\$50,000	\$50,000	\$50,000
HSIP - Lane Departure Resurfacing Improvements	\$100,000	\$100,000	\$100,000	\$100,000
HSIP - Lane Departure Roadway Section Improvements	\$100,000	\$100,000	\$100,000	\$100,000
HSIP - Drive Smart Safety Corridors	\$100,000	\$100,000	\$100,000	\$100,000
HSIP - Older Driver	\$25,000	\$25,000	\$25,000	\$25,000
HSIP - High Risk Rural Roads	\$100,000	\$100,000	\$100,000	\$100,000
Median Guardrail/Cable Projects	\$100,000	\$100,000	\$100,000	\$100,000
Rail Crossing Protection	\$50,000	\$50,000	\$50,000	\$50,000
Rail Crossing Separation	\$100,000	\$100,000	\$100,000	\$100,000
Intersection Improvements for Safety or Efficiency	\$25,000	\$25,000	\$25,000	\$25,000
Other Highway Safety Improvements	\$25,000	\$25,000	\$25,000	\$25,000
Intelligent Transportation System (ITS) Projects	\$50,000	\$50,000	\$50,000	\$50,000
Traffic Signal System Improvements	\$100,000	\$100,000	\$100,000	\$100,000
Highway Signing	\$10,000	\$10,000	\$10,000	\$10,000
Pavement Resurfacing, Restoration, and Rehabilitation	\$1,000,000	\$1,000,000	\$1,000,000	\$1,000,000
Pavement Markers and Striping	\$100,000	\$100,000	\$100,000	\$100,000
Bridge Replacement	\$500,000	\$500,000	\$500,000	\$500,000
Bridge Rehabilitation	\$100,000	\$100,000	\$100,000	\$100,000
Bridge Inspection	\$25,000	\$25,000	\$25,000	\$25,000
Bridge Painting	\$50,000	\$50,000	\$50,000	\$50,000
Surface Transportation Block Grant - Transportation Alternatives	\$600,000	\$600,000	\$600,000	\$600,000
Transportation, Community, and System Preservation (TCSP)	\$50,000	\$50,000	\$50,000	\$50,000
Congestion Mitigation Air Quality (CMAQ) Projects	\$1,000,000	\$1,000,000	\$1,000,000	\$1,000,000
Recreational Trails Program	\$100,000	\$100,000	\$100,000	\$100,000
Commuter Ridesharing Programs	\$25,000	\$25,000	\$25,000	\$25,000
Bicycle and Pedestrian Facilities	\$250,000	\$250,000	\$250,000	\$250,000
Park & Ride Facilities	\$50,000	\$50,000	\$50,000	\$50,000
Ferry Boat Capital and Operating Assistance	\$200,000	\$200,000	\$200,000	\$200,000
Purchase of New Buses (replace existing or minor expansion)	\$2,000,000	\$2,000,000	\$2,000,000	\$2,000,000
Rehabilitation of Transit Vehicles	\$250,000	\$250,000	\$250,000	\$250,000
Transit Operating Assistance	\$4,000,000	\$4,000,000	\$4,000,000	\$4,000,000
Transit Operating Equipment	\$500,000	\$500,000	\$500,000	\$500,000
Transit Passenger Shelters and Information Kiosks	\$50,000	\$50,000	\$50,000	\$50,000
Construction or Renovation of Transit Facilities	\$500,000	\$500,000	\$500,000	\$500,000
<b>*Illustrative Costs Only - Please refer to text <a href="#">(4.4 Grouped Projects)</a> for explanation.</b>				

**Table 6A – Grouped Projects Selected**

Table 6A - Grouped Projects Selected (F-Fayette; J-Jessamine)							TIP Years					2017 - 2020			
Project ID	Sponsor	Facility	Description	Fund Type	Phase	Pre 2017	FY 2017	FY 2018	FY 2019	FY 2020	Future	Total Cost	Federal Funds	State Funds	Local Funds
F 3103.00	LFUCG		Legacy Trail Phase III (Mod #6)	TE	R			\$102				\$102	\$83		\$19
					C			\$3,640				\$3,640	\$2,978		\$662
					Total	\$0	\$0	\$3,742	\$0	\$0	\$0	\$3,742	\$3,061		\$681
	LFUCG		Fiber Optic Cable	CMAQ	C	\$400						\$400			
					Total	\$400	\$0	\$0	\$0	\$0	\$0	\$400	\$0	\$0	\$0
F 3702.00	LFUCG		Town Branch Trail Crossing at Old Frankfort Pk and McConnell Springs Rd; includes ped signal, pavement markings, traffic calming, signage, and sight distance imp. (Mod #8 & #16)	CMAQ	D	\$92						\$92			
					R			\$117				\$117	\$96		\$21
					C					\$2,198		\$2,198	\$1,758		\$440
Total	\$92	\$0	\$117	\$0	\$2,198	\$0	\$2,407	\$1,854	\$0	\$461					
F 3224.00	LFUCG		Town Branch Trail Phase 3 Alex to Bizzell; Length= 1.1 mi	CMAQ	D	\$90						\$90			
					R	\$253					\$253				
					C			\$555			\$555	\$444		\$111	
Total	\$343	\$0	\$555	\$0	\$0	\$0	\$898	\$444	\$0	\$111					
	Lex-Frank SCI	KY 1681	Old Frankfort Pk. Corridor Management Plan	Scenic Byway	C	\$65						\$65			
					Total	\$65	\$0	\$0	\$0	\$0	\$0	\$65	\$0	\$0	\$0
F 3201.00	LFUCG	KY 1681	Old Frankfort Pike Scenic Byway Viewing Area at the intersection with Alexandria Dr.	TAP	D	\$63						\$63			
					R	\$123					\$123				
					C		\$569			\$569	\$455		\$114		
Total	\$186	\$569	\$0	\$0	\$0	\$0	\$755	\$455	\$0	\$114					
	Jess. Co. Fiscal Court		Replace 2 RJ Corman Railroad Group conventional diesel locomotive engines with Gen-Set locomotive engines	CMAQ	C	\$4,118						\$4,118			
					Total	\$4,118	\$0	\$0	\$0	\$0	\$0	\$4,118	\$0	\$0	\$0

Table 6A - Grouped Projects Selected (F-Fayette; J-Jessamine)							TIP Years				2017 - 2020					
Project ID	Sponsor	Facility	Description	Fund Type	Phase	Pre 2017	FY 2017	FY 2018	FY 2019	FY 2020	Future	Total Cost	Federal Funds	State Funds	Local Funds	
	LFUCG		Construction of a <b>compressed natural gas (CNG) fueling station</b>	CMAQ	C	\$1,573						\$1,573				
					Total	\$1,573	\$0	\$0	\$0	\$0	\$0	\$0	\$1,573	\$0	\$0	\$0
F 3708.00	LFUCG		<b>Town Branch Trail Phase 4</b> construct 2800 feet of trail from Bizzell Dr to Townley Shopping Center	CMAQ	D	\$106						\$106				
					R	\$162							\$162			
					U	\$58							\$58			
					C		\$684						\$684	\$547		\$137
					Total	\$326	\$684	\$0	\$0	\$0	\$0	\$0	\$1,010	\$547	\$0	\$137
F 3709.00	LFUCG		<b>Town Branch Trail Phase 5</b> construct 1mile of trail from New Circle Rd to McConnell Springs Park	CMAQ	D	\$742						\$742				
					R	\$276							\$276			
					U	\$115							\$115			
					C		\$3,958						\$3,958	\$3,166		\$792
					Total	\$1,133	\$3,958	\$0	\$0	\$0	\$0	\$0	\$5,091	\$3,166	\$0	\$792
F 3710.00	LFUCG		<b>Town Branch Trail Phase 6</b> construct 1.5 mile of trail from McConnell Springs Park to Oliver Lewis Way (See also item # F 3212.00)	CMAQ	D	\$430						\$430				
					Total	\$430	\$0	\$0	\$0	\$0	\$0	\$0	\$430	\$0	\$0	\$0
	Lextran		Purchase <b>5 electric buses and charging stations</b>	FTA 5312	C	\$7,504						\$7,504				
					Total	\$7,504	\$0	\$0	\$0	\$0	\$0	\$0	\$7,504	\$0	\$0	\$0
F 9002.00	KYTC	US 25	<b>Richmond Rd (US 25) access management and offset turn lanes</b> from New Circle Rd to Shriners Ln including improvements to approaches at Lakeshore & Fontaine (Mod #2) See SLX funded portion in Table 1	HSIP	D	\$50						\$50				
					R											
					U		\$400						\$400	\$400		
			Total	\$50	\$400	\$0	\$0	\$0	\$0	\$0	\$450	\$400	\$0	\$0		



Table 6A - Grouped Projects Selected (F-Fayette; J-Jessamine)							TIP Years				2017 - 2020				
Project ID	Sponsor	Facility	Description	Fund Type	Phase	Pre 2017	FY 2017	FY 2018	FY 2019	FY 2020	Future	Total Cost	Federal Funds	State Funds	Local Funds
F 3203.00	LFUCG	CS 1376	West Loudon Streetscape complete sidewalk gaps, install bike lanes, delineate parking and walkways from S. Broadway to Limestone	TAP	D	\$96						\$96			
					R		\$20				\$20	\$16		\$4	
					U		\$10					\$10	\$8		\$2
					C		\$349					\$349	\$279		\$70
					Total	\$96	\$379	\$0	\$0	\$0	\$0	\$475	\$303	\$0	\$76
F 3204.00	LFUCG		Winchester Rd/E. 7th St./Liberty Rd intersection improvements	TAP	D	\$10						\$10			
					R		\$2				\$2				
					U										
					C	\$268						\$268			
					Total	\$280	\$0	\$0	\$0	\$0	\$0	\$280	\$0	\$0	\$0
	LFUCG		Fayette County Elementary School Zone Enhancements	TAP	D										
					R										
					U										
					C					\$340		\$340	\$272		\$68
					Total	\$0	\$0	\$0	\$0	\$340	\$0	\$340	\$272	\$0	\$68
	WHEELS		Purchase 7 wheel-chair accessible vehicles	FTA 5310	C	\$303						\$303			
					Total	\$303	\$0	\$0	\$0	\$0	\$0	\$303	\$0	\$0	\$0
	Lextran		Purchase 2 40' CNG buses	FTA 5339	C	\$632						\$632			
					Total	\$632	\$0	\$0	\$0	\$0	\$0	\$632	\$0	\$0	\$0
	Lextran		Purchase 3 40' CNG buses	CMAQ	C	\$1,515						\$1,515			
					Total	\$1,515	\$0	\$0	\$0	\$0	\$0	\$1,515	\$0	\$0	\$0
F 3715.00	LFUCG		Fiber Optic Cable	CMAQ	C	\$530						\$530			
					Total	\$530	\$0	\$0	\$0	\$0	\$0	\$530	\$0	\$0	\$0

Table 6A - Grouped Projects Selected (F-Fayette; J-Jessamine)							TIP Years					2017 - 2020			
Project ID	Sponsor	Facility	Description	Fund Type	Phase	Pre 2017	FY 2017	FY 2018	FY 2019	FY 2020	Future	Total Cost	Federal Funds	State Funds	Local Funds
F 3717.00	LFUCG		<b>Brighton Rail Trail Bridge Phase IV</b> construct bridge and trail connections across Man O' War Blvd between Helmsdale Pl and Pink Pigeon Pkwy SLX funded phases in Table 1. <b>Mod #29</b>	CMAQ	D	\$45						\$45			
					R		\$96					\$96	\$77	\$19	
					U		\$612					\$612	\$490	\$122	
					C			\$1,975				\$1,975	\$1,580	\$395	
					Total	\$45	\$708	\$1,975	\$0	\$0	\$0	\$2,728	\$2,146	\$0	\$537
F 3718.00	LFUCG	KY 1681	<b>Manchester St.</b> <b>left turn lanes at Forbes Rd</b>	CMAQ	D	\$90						\$90			
					R		\$225				\$225	\$180	\$45		
					U		\$10					\$10	\$8	\$2	
					C			\$568				\$568	\$454	\$114	
					Total	\$90	\$235	\$568	\$0	\$0	\$0	\$893	\$642	\$0	\$161
	LFUCG	CS 3886	<b>Squires Rd sidewalk</b> on the north side of the 200 block	CMAQ	D	\$30						\$30			
					R		\$6				\$6				
					U		\$8					\$8			
					C			\$164				\$164	\$131	\$33	
					Total	\$44	\$164	\$0	\$0	\$0	\$0	\$208	\$131	\$0	\$33
F 3713.00	LFUCG		<b>West Hickman Trail South</b> construct 4000 ft. shared use trail within Veterans Park that will extend existing trail to elementary school	CMAQ	D	\$140						\$140			
					R		\$12				\$12	\$10	\$2		
					U		\$58					\$58	\$46	\$12	
					C			\$741				\$741	\$593	\$148	
					Total	\$140	\$70	\$741	\$0	\$0	\$0	\$951	\$649	\$0	\$162
	LFUCG/Transy	CS 1375	<b>4th Street Corridor improvements</b> between Jefferson and Upper St; length=0.43 mi	CMAQ	D	\$45						\$45			
					R		\$55				\$55				
					U		\$1,200					\$1,200	\$960	\$240	
					C										
					Total	\$100	\$1,200	\$0	\$0	\$0	\$0	\$1,300	\$960	\$0	\$240

Table 6A - Grouped Projects Selected (F-Fayette; J-Jessamine)							TIP Years					2017 - 2020			
Project ID	Sponsor	Facility	Description	Fund Type	Phase	Pre 2017	FY 2017	FY 2018	FY 2019	FY 2020	Future	Total Cost	Federal Funds	State Funds	Local Funds
F 3714.00	LFUCG	US 60	<b>Town Branch Commons - Midland Section</b> construct bike/ped facilities from Vine/Quality St to Third St at the Legacy Trail; length=0.7 mi (Mod #9 and Mod #20)	CMAQ	D	\$400						\$400			
					R						\$886				\$886
					U			\$350				\$350	\$280	\$70	
					C				\$4,864			\$4,864	\$3,891	\$973	
					Total	\$400	\$0	\$1,236	\$4,864	\$0	\$0	\$6,500	\$4,880	\$0	\$1,220
F 3207.00	LFUCG	US 60	<b>Town Branch Commons - Vine St. Section</b> construct bike/ped facility from Limestone to Quality St.; length=0.3 mi	TAP	D	\$293						\$293			
					R										
					U										
					C			\$3,119				\$3,119	\$2,495	\$624	
					Total	\$293	\$0	\$3,119	\$0	\$0	\$0	\$3,412	\$2,495	\$0	\$624
	LFUCG	US 60	<b>Town Branch Commons Corridor -</b> multimodal greenway connecting the Legacy Trail and the Town Branch Trail; length=2.5 mi (Mod #1)	TIGER	D										
					R										
					U										
					C			\$17,625				\$17,625	\$14,100	\$3,525	
					Total	\$0	\$0	\$17,625	\$0	\$0	\$0	\$17,625	\$14,100	\$0	\$3,525
	Lextran		Purchase 1 40' CNG bus	Sec 5339	C	\$585						\$585			
					Total	\$585	\$0	\$0	\$0	\$0	\$0	\$585	\$0	\$0	\$0
	Lextran		Purchase 1 40' electric bus (Mod #1)	Sec 5339	C			\$804				\$804	\$683	\$121	
					Total	\$0	\$0	\$804	\$0	\$0	\$0	\$804	\$683	\$0	\$121
F 3212.00	LFUCG		<b>*Town Branch Trail Phase 6 -</b> multiuse trail from the end of Phase 5 just W of Forbes Rd through the Distillery District to Town Branch Commons near Oliver Lewis Way; length=1.5 mi (Mod #1)	TAP	D		\$847					\$847	\$693	\$154	
					R										
					U										
					C										
					Total	\$0	\$847	\$0	\$0	\$0	\$0	\$847	\$693	\$0	\$154

Table 6A - Grouped Projects Selected (F-Fayette; J-Jessamine)							TIP Years					2017 - 2020				
Project ID	Sponsor	Facility	Description	Fund Type	Phase	Pre 2017	FY 2017	FY 2018	FY 2019	FY 2020	Future	Total Cost	Federal Funds	State Funds	Local Funds	
F 3213.00	LFUCG	CS 3037	<b>*Armstrong Mill sidewalks -</b> construct sidewalks between Tates Creek Rd and Greentree Rd; length=0.3 mi (Mod #1, 3 & 14)	TAP	D		\$88					\$88	\$72		\$16	
				CMAQ	D					\$112			\$112	\$90		\$22
					R				\$15			\$15	\$12		\$3	
					U				\$25			\$25	\$20		\$5	
					C						\$1,176		\$1,176	\$941		\$235
	Total		\$0	\$88	\$0	\$152	\$1,176	\$0	\$1,416	\$1,135	\$0	\$281				
J 3214.00	Nicholasville	KY 39	<b>*East High Shared Use Trail -</b> construct trail along West Maple St (KY 39) from Cental Ave to the proposed Eastern Bypass Trail; length=0.7 mi (Mod #1, Mod #21)	TAP	D		\$143			\$68		\$211	\$169		\$42	
					R				\$457		\$457	\$366		\$91		
					U				\$180		\$180	\$144		\$36		
					C						\$2,200	\$2,200				
				Total	\$0	\$143	\$0	\$0	\$705	\$2,200	\$3,048	\$679	\$0	\$169		
J 3215.00	Nicholasville	KY 29	<b>*West High Shared Use Trail -</b> construct trail along Wilmore Rd (KY 29) from Cooks Lane to Allie Run including realignment offset intersection and traffic and ped signals; length=0.9 mi (Mod #1, Mod #21)	TAP	D		\$154			\$80		\$234	\$187		\$47	
					R				\$192		\$192	\$154		\$38		
					U				\$48		\$48	\$38		\$10		
					C						\$2,007	\$2,007				
				Total	\$0	\$154	\$0	\$0	\$320	\$2,007	\$2,481	\$379	\$0	\$95		
F 3216.00	LFUCG	CS 7038	<b>*Wilson Downing sidewalks -</b> construct sidewalk to connect various sections of existing sidewalk; length=1.1 mi (Mod #1) (Mod #16)	TAP	D		\$110					\$110	\$90		\$20	
				CMAQ	R					\$81		\$81	\$65		\$16	
					U				\$30		\$30	\$24		\$6		
					C				\$824		\$824	\$659		\$165		
					Total	\$0	\$110	\$0	\$0	\$935	\$0	\$1,045	\$838	\$0	\$207	
F 3217.00	LFUCG	CS 4284	<b>*Elizabeth Street sidewalks -</b> construct sidewalks along both sides between Waller Ave and Transcript Ave; length=0.3 mi (Mod #1)	TAP	D		\$138					\$138	\$113		\$25	
					R						\$140	\$140				
					U					\$25	\$25					
					C					\$1,100	\$1,100					
				Total	\$0	\$138	\$0	\$0	\$0	\$1,265	\$1,403	\$113	\$0	\$25		

Table 6A - Grouped Projects Selected (F-Fayette; J-Jessamine)							TIP Years				2017 - 2020				
Project ID	Sponsor	Facility	Description	Fund Type	Phase	Pre 2017	FY 2017	FY 2018	FY 2019	FY 2020	Future	Total Cost	Federal Funds	State Funds	Local Funds
F 3218.00	LFUCG		<b>*Beaumont YMCA trail and crossing</b> - construct trail connecting the Beaumont YMCA to Harrods Hill Park and surrounding neighborhoods; length=0.2 mi (Mod #1)	TAP	D		\$28					\$28	\$23		\$5
					R										
					U						\$45	\$45			
					C						\$45	\$73	\$23	\$0	\$5
				Total		\$0	\$28	\$0	\$0	\$0	\$45	\$73	\$23	\$0	\$5
F 3219.00	LFUCG	CS 4735	<b>*Rosemont Garden sidewalks</b> - construct sidewalk along three blocks just east of Southland Dr; length=0.2 mi (Mod #1 & #22). See Table 1 for SLX funded portion.	TAP	D		\$138					\$138	\$113		\$25
					R										
					U										
					C										
				Total		\$0	\$138	\$0	\$0	\$0	\$0	\$138	\$113	\$0	\$25
F 3220.00	LFUCG	CS 4634	<b>*Oxford Circle sidewalks</b> - construct sidewalk to connect Cambridge Dr to Versailles Rd; length=0.1 mi (Mod #1 & 3) (Mod #12)	TAP	D		\$28					\$28	\$23		\$5
					R					\$7				\$7	\$6
				CMAQ	U			\$3				\$3	\$2		\$1
					C			\$61				\$61	\$49		\$12
				Total		\$0	\$28	\$64	\$7	\$0	\$0	\$99	\$80	\$0	\$19
F 3221.00	LFUCG	CS 2690	<b>*Old Todds Road sidewalks</b> - construct sidewalk along the north side between Catera Trace and Woodhill Dr; length=0.3 mi (Mod #1, Mod #21)	TAP	D		\$110					\$110	\$90		\$20
					R										
					U										
					C					\$260		\$260	\$208		\$52
				Total		\$0	\$110	\$0	\$0	\$260	\$0	\$370	\$298	\$0	\$72
F 3222.00	LFUCG		<b>*South Elkhorn Trail</b> - construct a shared use trail to connect existing trail segments within Shillito Park and south of Man O' War; length=0.1 mi (Mod #1)	TAP	D		\$83					\$83	\$68		\$15
					R								\$10	\$10	
					U						\$5	\$5			
					C						\$450	\$450			
				Total		\$0	\$83	\$0	\$0	\$0	\$465	\$548	\$68	\$0	\$15

Table 6A - Grouped Projects Selected (F-Fayette; J-Jessamine)							TIP Years					2017 - 2020					
Project ID	Sponsor	Facility	Description	Fund Type	Phase	Pre 2017	FY 2017	FY 2018	FY 2019	FY 2020	Future	Total Cost	Federal Funds	State Funds	Local Funds		
F 3223.00	LFUCG		*Citation Trail - construct shared use trail from existing bike lanes/sidewalk on Citation Blvd through Mable Ln Greenway continuing to Masterson Hills Park to Jacquelyn Dr; length=0.7 mi (Mod #1, #21 & #24)	TAP	D		\$110					\$110	\$88		\$22		
					R												
					U												
					C					\$405		\$405	\$324		\$81		
					Total	\$0	\$110	\$0	\$0	\$405	\$0	\$515	\$412	\$0	\$103		
	Lextran		Improve access at a number of bus stops (Mod #1)	5310	D												
R																	
U																	
					C		\$176					\$176	\$141		\$35		
					Total	\$0	\$176	\$0	\$0	\$0	\$0	\$176	\$141	\$0	\$35		
	ITN Bluegrass		Continue transportation for persons 60 and over and adults with visual impairment (Mod #1)	5310	D												
R																	
U																	
					C		\$120					\$120	\$60		\$60		
					Total	\$0	\$120	\$0	\$0	\$0	\$0	\$120	\$60	\$0	\$60		
	LFUCG	CS 1257	Mercer Rd at Greendale Road Turn Lanes (Mod #3 & #23)	CMAQ	D			\$92				\$92	\$75		\$17		
R														\$279	\$227		\$52
U														\$43	\$43	\$35	
					C							\$658	\$536		\$122		
					Total	\$0	\$0	\$92	\$0	\$980	\$0	\$1,072	\$873	\$0	\$199		
	LFUCG	KY 169	Valley View Ferry - purchase 4 acres, construct new ramp, parking area and retaining wall (Mod #4)	FBP	D			\$137				\$137	\$109		\$27		
R														\$39	\$31		\$8
U														\$9	\$9	\$7	
					C			\$268				\$268	\$215		\$54		
					Total	\$0		\$452	\$0	\$0	\$0	\$452	\$362	\$0	\$90		

Table 6A - Grouped Projects Selected (F-Fayette; J-Jessamine)							TIP Years				2017 - 2020					
Project ID	Sponsor	Facility	Description	Fund Type	Phase	Pre 2017	FY 2017	FY 2018	FY 2019	FY 2020	Future	Total Cost	Federal Funds	State Funds	Local Funds	
	Lextran		Purchase 1 <b>40' electric bus</b> and on-route electric bus charger (Mod #4)	Sec 5339	C			\$1,250				\$1,250	\$1,000		\$250	
				Total			\$0	\$0	\$1,250	\$0	\$0	\$0	\$1,250	\$1,000	\$0	\$250
F 9003.50	KYTC	US 27 & CS 4904	<b>Virginia Ave</b> - extend right turn lane on EB Virginia Ave at US 27, including signal and striping updates (Mod #7)	HSIP	D											
					R											
					U			\$111				\$111	\$111			
					C											
					Total		\$0	\$0	\$111	\$0	\$0	\$0	\$111	\$111	\$0	\$0
J 931.00	KYTC	KY 169	<b>KY 169 Safety Improvements</b> - Improve superelevation, add embankment, improve sight-distance and remove roadside hazards on KY 169 from KY 1267 (MP 16.685) to Jessamine-Woodford County Line (MP 19.180). Length = 2.495 mi. (Mod #8)	HSIP	D											
					R					\$57				\$57	\$57	
					U			\$300				\$300	\$300			
					C											
					Total		\$0	\$0	\$357	\$0	\$0	\$0	\$357	\$357	\$0	\$0
F 9003.10	KYTC	US 25	<b>US 25 Safety Improvements</b> - Reconfigure the median noses, update the signing and striping, reconstruct the sidewalk ramps, and install a right turn overlap at the intersection of US 25 and Man O War Blvd. (Mod #8)	HSIP	D											
					R											
					U			\$52				\$52	\$52			
					C											
					Total		\$0	\$0	\$52	\$0	\$0	\$0	\$52	\$52	\$0	\$0
F 9003.20	KYTC	CS 2540	<b>Pink Pigeon/MOW Safety Improvements</b> - Update the signal to include reflective backplates, and update the signing, striping, and sidewalk ramps at the intersection of Pink Pigeon Pkwy and Man O War Blvd. (Mod #8)	HSIP	D											
					R											
					U			\$26				\$26	\$26			
					C											
					Total		\$0	\$0	\$26	\$0	\$0	\$0	\$26	\$26	\$0	\$0
	Lextran		Purchase 3 <b>40' electric buses</b> (Mod #13)	Sec 5339	C			\$2,863				\$2,863	\$2,290		\$573	
				Total			\$0	\$0	\$2,863	\$0	\$0	\$0	\$2,863	\$2,290	\$0	\$573

Table 6A - Grouped Projects Selected (F-Fayette; J-Jessamine)						TIP Years				2017 - 2020						
Project ID	Sponsor	Facility	Description	Fund Type	Phase	Pre 2017	FY 2017	FY 2018	FY 2019	FY 2020	Future	Total Cost	Federal Funds	State Funds	Local Funds	
F 9003.30	KYTC	KY 1974	KY 1974 Safety Improvements - Cross-hatch paved median along the NB Tates Creek Rd approach, update signing, and update signal to include reflective backplates at the intersection of Tates Creek Rd and Man O War Blvd. (Mod #8)	HSIP	D											
					R											
					U			\$64				\$64	\$64			
					C											
					Total	\$0	\$0	\$64	\$0	\$0	\$0	\$64	\$64	\$0	\$0	\$0
F 9003.40	KYTC	CS-4524	Pleasant Ridge/MOW Safety Improvements - Add a second left turn lane along WB Man O War Blvd., and update the striping, signing, and sidewalk ramps at the intersection of Man O War Blvd. and Pleasant Ridge Dr. (Mod #8)	HSIP	D											
					R											
					U			\$162				\$162	\$162			
					C											
					Total	\$0	\$0	\$162	\$0	\$0	\$0	\$162	\$162	\$0	\$0	\$0
F 9003.60	KYTC	US 27 & CS 3223	US 27 & Cooper/Waller Safety Improvements - Update the signal to include reflective backplates, construct a bus turnout, and update the signing at the intersection of US 27 with Waller Ave. and Cooper Dr. (Mod #8)	HSIP	D											
					R											
					U			\$85				\$85	\$85			
					C											
					Total	\$0	\$0	\$85	\$0	\$0	\$0	\$85	\$85	\$0	\$0	\$0
F 944.00	KYTC	KY 1968	KY 1968 - Parkers Mill Road - Roadside Improvements 4tgh (MP 4.942). Length = 4.942 mi. (Mod #8)	HSIP	D											
					R											
					U			\$350				\$350	\$350			
					C											
					Total	\$0	\$0	\$350	\$0	\$0	\$0	\$350	\$350	\$0	\$0	\$0
	Lextran		Purchase 2 40' electric buses and 2 charging stations (Mod #16)	CMAQ	C							\$1,736	\$1,736	\$1,389		\$347
					Total	\$0	\$0	\$0	\$0	\$0	\$1,736	\$0	\$1,736	\$1,389	\$0	\$347
	LFUCG	CS 3663	Mt. Tabor Rd Multimodal Improvements Construction of sidewalks, bike lanes and associated infrastructure along Mt. Tabor Rd between Patchen Dr and the Richmond Rd service road (Mod #16)	CMAQ	D							\$54	\$54	\$43		\$11
					R											
					U			\$30				\$30	\$24		\$6	
					C			\$1,286				\$1,286	\$1,029		\$257	
					Total	\$0	\$0	\$0	\$0	\$1,370	\$0	\$1,370	\$1,096	\$0	\$274	



Table 6A - Grouped Projects Selected (F-Fayette; J-Jessamine)						TIP Years					2017 - 2020				
Project ID	Sponsor	Facility	Description	Fund Type	Phase	Pre 2017	FY 2017	FY 2018	FY 2019	FY 2020	Future	Total Cost	Federal Funds	State Funds	Local Funds
	Valley View Ferry Authority		Restoration and Preservation of the <b>Valley View Ferry</b> car barge and safety cable guidance system (Mod #18)	FBP	D R U C				\$80			\$80	\$64		\$16
					Total	\$0	\$0	\$0	\$80	\$0	\$0	\$80	\$64	\$0	\$16
J 09009.00	KYTC	US 68	<b>US 68</b> – Harrodsburg Road – Perform low cost safety improvements from Mercer County Line (MP 0.000) to NE of Clear Creek Road (MP 4.807). Length = 4.807 (Mod #11)	HSIP	D R U C			\$175				\$175	\$175		
					Total	\$0	\$0	\$175	\$0	\$2,000	\$0	\$2,000	\$2,000	\$0	\$0
F 224.10	LFUCG	CS 4174	<b>Clays Mill Rd</b> widen from Harrodsburg Rd to New Circle Rd - Section 1; Length=2.0 mi (Mod #10, Mod #20 see SLX funded portion in Table 1)	CMAQ	D R U C				\$13,200			\$13,200	\$13,200		
					Total	\$0	\$0	\$0	\$13,200	\$0	\$0	\$13,200	\$13,200	\$0	\$0
	Lextran		Covered storage area and the incremental cost of additional zero emission vehicles (Mod #21)	SEC 5339	C					\$2,750		\$2,750	\$2,200		\$550
					Total	\$0	\$0	\$0	\$0	\$2,750	\$0	\$2,750	\$2,200	\$0	\$550
F 9006.50	KYTC	US 27	<b>South Lime at Maxwell Safety Improvements</b> Rebuild traffic signal to include reflective backplates and construct pedestrian improvements. (Mod #25)	HSIP	C					\$185		\$185	\$185		
					Total	\$0	\$0	\$0	\$0	\$185	\$0	\$185	\$185	\$0	\$0
F 9006.10	KYTC	US 27	<b>US 27 &amp; W Loudon Safety Improvements</b> Install supplemental signal heads, construct median access control along US 27, close an entrance on W Loudon Ave, and update the striping near the Intersection. (Mod #26)	HSIP	C					\$77		\$77	\$77		
					Total	\$0	\$0	\$0	\$0	\$77	\$0	\$77	\$77	\$0	\$0

Table 6A - Grouped Projects Selected (F-Fayette; J-Jessamine)							TIP Years				2017 - 2020				
Project ID	Sponsor	Facility	Description	Fund Type	Phase	Pre 2017	FY 2017	FY 2018	FY 2019	FY 2020	Future	Total Cost	Federal Funds	State Funds	Local Funds
F 9006.50	KYTC	US 27	<b>US 27 &amp; W Main Safety Improvements</b> Update the traffic signal to include reflective backplates, double red signal heads, and supplemental signal heads at the intersection. (Mod #26)	HSIP	C					\$21		\$21	\$21		
					Total	\$0	\$0	\$0	\$0	\$21	\$0	\$21	\$21	\$0	\$0
F 9006.40	KYTC	US 25	<b>US 25 &amp; Citation Safety Improvements</b> Update the traffic signal to include reflective backplates and improve the turning radius of the NB US 25 left turn lane at the intersection. (Mod #26)	HSIP	C					\$38		\$38	\$38		
					Total	\$0	\$0	\$0	\$0	\$38	\$0	\$38	\$38	\$0	\$0
F 9006.60	KYTC	CS 4524	<b>Man O' War &amp; Parkers Mill Safety Improvements</b> Update the traffic signal to include reflective backplates and update the signing and striping near the Intersection. (Mod #26)	HSIP	C					\$56		\$56	\$56		
					Total	\$0	\$0	\$0	\$0	\$56	\$0	\$56	\$56	\$0	\$0
F 956.0	KYTC	I-75/I-64	Installation of High Friction Surface Treatment on the I-75 SB to I-64 WB ramp between MP 0.550 and MP 0.820 (Mod #26)	HSIP	C					\$100		\$100	\$100		
					Total	\$0	\$0	\$0	\$0	\$100	\$0	\$100	\$100	\$0	\$0
F 951.0	KYTC	US 421	Installation of Striping on US 421 (MP 0.000 to MP 8.166) (Mod #27)	HSIP	C					\$605		\$605	\$100		
					Total	\$0	\$0	\$0	\$0	\$605	\$0	\$605	\$100	\$0	\$0

<b>Total</b>	<b>\$21,273</b>	<b>\$10,640</b>	<b>\$36,585</b>	<b>\$18,303</b>	<b>\$16,157</b>	<b>\$5,982</b>	<b>\$108,940</b>	<b>\$69,067</b>	<b>\$0</b>	<b>\$12,618</b>
--------------	-----------------	-----------------	-----------------	-----------------	-----------------	----------------	------------------	-----------------	------------	-----------------

\* TAP and CMAQ projects reflect 81.81% federal funds in design phases and 18.18% local funds due to state forces (equal to 10% of total project cost) being 100% federal funds

**Table 7 – TIP Summary Table (\$1,000)**

Table 7- Summary Table		TIP Years					2017 - 2020							
Fund Type	Pre 2017	FY 2017	FY 2018	FY 2019	FY 2020	Future	Total Cost	Total Cost	Federal Cost	State Cost	Local Cost	Federal Revenue	State Revenue	Local Revenue
Bridge Replacement (BR)	\$1,685		\$427	\$2,086	\$5,262	\$735	\$10,195	\$7,775	\$7,775			\$7,775		
Congestion Mitigation and Air Quality (CMAQ)	\$11,279	\$7,019	\$5,348	\$18,223	\$5,724		\$47,593	\$36,314	\$31,709		\$4,605	\$31,709		\$4,605
Highway Safety Improvement Project (HSIP)	\$50	\$400	\$1,382		\$2,056		\$3,888	\$3,838	\$3,838			\$3,838		
Interstate Maintenance (IM)			\$1,750			\$27,000	\$28,750	\$1,750	\$1,750			\$1,750		
National Highway (NH)	\$2,000	\$800	\$45,900	\$5,000		\$15,000	\$80,480	\$63,480	\$63,480			\$63,480		
State Construction (SPP)	\$22,380	\$27,815	\$30,035		\$2,000	\$17,000	\$99,230	\$59,850		\$59,850			\$59,850	
State Construction (SP or SPP) Info. Supplement		\$330	\$330	\$330	\$5,070	\$16,830	\$22,890	\$6,060		\$6,060			\$6,060	
Surface Transportation Block Grant Program (STP)		\$6,230	\$12,500	\$20,650	\$4,080	\$6,190	\$49,650	\$43,460	\$43,460			\$43,460		
Surface Transportation Block Grant Program - dedicated Lexington (SLX)	\$2,379	\$1,717	\$1,533	\$6,943	\$16,186	\$946	\$29,704	\$26,379	\$24,762		\$1,617	\$24,762		\$1,617
Surface Transportation Block Grant - Transportation Alternatives (TAP)	\$855	\$2,925	\$3,119		\$2,965	\$5,982	\$15,846	\$9,009	\$7,244		\$1,765	\$7,244		\$1,765
Maintenance and Operations (O & M)	\$8,563	\$23,600	\$23,600	\$23,600	\$23,600		\$102,963	\$102,963	Cost and revenue for maintenance and operations is split between federal, state and local sources and varies by year					
Grouped Projects - Highway	\$5,000	\$5,000	\$5,000	\$5,000	\$5,000	\$5,000	\$30,000	\$20,000	Cost and revenue for grouped projects varies by program but is usually 80% federal funds matched with 20% state or local funds					
<b>Highway Totals</b>	<b>\$54,191</b>	<b>\$75,836</b>	<b>\$130,924</b>	<b>\$81,882</b>	<b>\$81,723</b>	<b>\$94,683</b>	<b>\$519,239</b>	<b>\$378,928</b>	<b>\$184,018</b>	<b>\$63,960</b>	<b>\$7,988</b>	<b>\$184,018</b>	<b>\$63,960</b>	<b>\$7,988</b>

Table 7- Summary Table		TIP Years							2017 - 2020					
Fund Type	Pre 2017	FY 2017	FY 2018	FY 2019	FY 2020	Future	Total Cost	Total Cost	Federal Cost	State Cost	Local Cost	Federal Revenue	State Revenue	Local Revenue
Grouped Projects - Transit	\$7,500	\$7,500	\$7,500	\$7,500	\$7,500	\$7,500	\$45,000	\$30,000	Cost and revenue for transit projects varies by program					
Transit Program (FTA)		\$6,756	\$6,815	\$6,876	\$6,938	\$6,538	\$33,407	\$27,385	\$21,916	\$40	\$5,429	\$21,916	\$40	\$5,429
<b>Transit Totals</b>	<b>\$7,500</b>	<b>\$14,256</b>	<b>\$14,315</b>	<b>\$14,376</b>	<b>\$14,438</b>	<b>\$14,038</b>	<b>\$78,407</b>	<b>\$57,385</b>	<b>\$21,916</b>	<b>\$40</b>	<b>\$5,429</b>	<b>\$21,916</b>	<b>\$40</b>	<b>\$5,429</b>

## APPENDIX A - Status of Projects not in FY2017-2020 TIP

The following is a summary of major projects from the previous TIP (FY 2013-2016) that are not part of the new FY2017 – FY2020 TIP and their status:

Project ID	Sponsor	Facility	Description	Status
7-223.02	KYTC	US 421	<b>Leestown Rd.</b> widen to 4 lanes from existing 4-lane to Masterson Park; Length=1.6 mi	constructed
7-224.53	LFUCG	CS - 4174	<b>Clays Mill Rd</b> widen from Higbee Mill Rd to Twain Ridge Dr - Section 2B; Length=0.3 mi	constructed
7-224.55	LFUCG	CS - 4174	<b>Clays Mill Rd</b> widen from New Circle Rd to Keithshire Way - Section 2C; Length=0.6 mi	constructed
7-396.00	KYTC/Jess. Co.	KY 1268	<b>Wilmore downtown drainage</b> and street improvements	constructed
7-398.00	KYTC/Jess. Co.	KY 169	<b>Culvert replacement 0.5 mi W of US 68</b>	constructed
	LFUCG	KY 1974	<b>Tates Creek Rd</b> signal upgrades to replace inadequate facilities, upgrade signal faces and to accommodate upgraded street crosswalks	constructed
7-403.00	KYTC/Jess. Co.		<b>Nicholasville/Jessamine Co. pedestrian connections to schools study and preliminary engineering</b>	complete in 2016
7-223.00	KYTC	US 421	<b>Leestown Rd.</b> widen to 4 lanes from existing 4-lane to Masterson Park; Length=1.5 mi	constructed
7-430.00	KYTC	US 27	<b>Nicholasville Rd</b> Access Management between Nicholasville and Man O' War Blvd; Length=5.4 mi	D phase 2016
7-225.00 7-225.01	LFUCG	KY 1927	<b>Liberty Rd/Todds Rd</b> widen from 0.2 mi S. of Andover Forest Dr/Forest Hill Dr to Polo Club Blvd - Section 2A & 2B; L=1.6 mi	constructed
7-231.00	LFUCG	Rose Street	<b>Rose Street</b> add a bike lane from Rose Lane to Euclid; Length=0.2 mi	under construction
7-237.00	KYTC		<b>Pedestrian mall and streetscape improvements</b> on Lexington College, Walnut and Gilespie Sts. <b>Wilmore</b>	constructed
7-593.04	KYTC / LFUCG	KY 922	<b>Newtown Pk. Extension</b> from Main St. to S. Limestone (additional funding for CLT); Length=2.5 mi	completed
7-593.10	KYTC / LFUCG	KY 922	<b>Newtown Pk. Extension</b> - Priority 2: Redevelopment of Southend Park Neighborhood	under construction
7-593.12	KYTC / LFUCG	KY 922	<b>Newtown Pk. Extension</b> - Priority 2: redevelopment of Southend Park neighborhood	under construction
7-593.14	KYTC / LFUCG	KY 922	<b>Newtown Pk. Extension</b> - Priority 2: redevelopment of Southend Park neighborhood	under construction
7-1111.00	KYTC	CR-1122	<b>Bridge over Boone Creek @ Clark Co. line;</b> Length=0.1 mi	constructed
7-1134.00	KYTC	KY 353	<b>Russell Cave bridge</b> over I-64/75; overlay bridge deck; Length=0.1 mi	constructed
7-1135.00	KYTC	KY 57	<b>Bryan Station bridge</b> over I-64/75; overlay bridge deck; Length=0.1 mi	constructed
7-2033.00	KYTC	US 60	<b>US 60</b> pavement rehab from Bluegrass Pkwy to KY 4; Length=8.0 mi	constructed
7-2045.00	KYTC	US 60	<b>Versailles Rd. pavement rehab</b> from Bennett Ave to Oliver Lewis Way; Length=0.5 mi	constructed

Project ID	Sponsor	Facility	Description	Status
7-226.10	KYTC	New Route	<b>Citation Boulevard</b> - Phase IIA from Southern RR to Mercer Rd; Length=1.7 mi	constructed
7-226.40	KYTC	New Route	<b>Citation Boulevard</b> - Phase IIB from Mercer Rd to Leestown Rd.; Length=0.8 mi	constructed
7-101.00	KYTC	KY 4	<b>New Circle Rd bridge painting</b>	completed
7-421.00	KYTC	CS 1375	<b>4th Street</b> widen to 3 lanes from Henry St to Newtown Pk (KY922) including a new S entrance to BCTC; 0.2 mi	constructed
7-422.00	KYTC	CS 1376	<b>N entrance to BCTC</b> construct with turn lanes on Loudon Ave and Newtown Pk; Length=0.1 mi	constructed
7-429.00	KYTC	CS 3016	<b>Alumni Dr</b> upgrade between Nicholasville Rd and Tates Creek Rd; Length=1.2 mi	constructed
7-8502.00	KYTC	US 27X	<b>Main Street</b> provide streetlights from Oak Street to Chestnut Street; Length=0.2 mi	completed
7-87.10	KYTC	New Route	<b>East Nicholasville Bypass</b> Section 1 from US 27 N of Nicholasville to KY 39; Length=4.3 mi	split in 2 sections
7-279.00	KYTC	KY 4	<b>New Circle Road</b> reconstruct Versailles Rd interchange; Length=0.1 mi	under construction
7-3107.00	LFUCG	New Trail	<b>Legacy Trail</b> amenities and enhancements including the Isaac Murphy Memorial Art Garden trailhead	completed
7-3701.00	KYTC	IC-8104W	<b>University Dr bike lane extension</b> from Cooper Dr to Alumni Dr; Length=0.4 mi	constructed
7-3706.00	LFUCG		<b>Gainesway Trail</b> from Tates Creek School to Gainesway Park; Length= 0.8 mi	constructed
7-113.00	KYTC	KY 4	<b>New Circle Road</b> improvements between Versailles Rd and Georgetown Rd.; Length=4.1 mi	constructed
7-593.20	KYTC / LFUCG	KY 922	<b>Newtown Pk. Extension</b> - Priority 3: From Versailles Rd to Broadway (Phase II); Length=0.6 mi	under construction
7-410.00	KYTC		<b>New Connector</b> preliminary engineering and evaluate the financial feasibility of design/build/toll between US 27 N of Nicholasville and I-75 at the KY 627 interchange; Length=2.5 mi	in D phase
7-230.00	LFUCG	NA	<b>West Hickman Trail Phase 1B</b> from Clearwater Way at Man o' War Blvd. to Veterans Park; length=1.5 mi	constructed
7-3023.00	LFUCG		<b>South Limestone Streetscape Improvements</b>	completed
	KYTC		<b>Wilmore Transportation Museum</b>	completed
7-404.00	LFUCG		<b>Southland Drive</b> Bike/Pedestrian Improvements	constructed
7-405.00	LFUCG		<b>Loudon Avenue</b> Sidewalk	constructed
	Lextran		<b>LexTran/Art in Motion "smART" Shelter</b>	constructed
	Lextran		Lextran Electronic <b>Fare Payment System</b> and Smart Cards	funded
	Jess. Co.		<b>RJ Corman The "Gen-Set Revolution" Project</b>	funded
	Lextran		Lextran construction and rehabilitation of <b>administrative and maintenance facilities</b> on Loudon Ave.	completed
7-917.00	KYTC	US 27	<b>Adaptive Signal Control</b> - develop, implement and study use of <b>adaptive signal control</b> from MP 4.674 to MP 5.769	completed
7-923.00	KYTC	US 60	<b>Versailles Rd</b> rebuild traffic signal at Forbes/Red Mile Rd	completed
	KYTC		<b>Valley View Ferry capital improvements</b>	funded
	Lextran		<b>Bus and bus facilities (shelters and operator seats)</b>	funded

<b>Project ID</b>	<b>Sponsor</b>	<b>Facility</b>	<b>Description</b>	<b>Status</b>
	LFUCG		<b>Brighton Rail Trail Phase 4</b> construct 2600 feet of trail linking to the existing 1 mile trail from Liberty Rd to MOW	constructed
7-392.00	LFUCG	KY 1974	<b>Tates Creek Rd sidewalks</b> from Dove Run Rd to just south of Montclair Dr; Length=1.7 mi	constructed
	Lextran		<b>FTA New Freedom funding:</b> Bluegrass Cab Co. - purchase 4 wheelchair accessible vehicles; Yellow Cab - purchase 2 wheelchair accessible vehicles; ITN Bluegrass - transportation services for seniors and visually impaired	funded
	Lextran		<b>FTA JARC funding:</b> Lextran - continue JOBS bus route; ITN Bluegrass - transportation services to employment	funded
	LFUCG		<b>Safe Routes to School - Fayette Co</b>	funded
	KYTC/LFUCG		<b>Kentucky Horse Park Legacy Trail Extension</b> shared use path along the S and W property boundaries connecting to the existing N terminus of the Legacy Trail includes trailhead	constructed
F 220.00	LFUCG	US 25	<b>Richmond Rd. Multiuse Path</b> between Eagle Creek Dr. and Coys Lane; Length=1.2 mi	delayed - right-of-way issues

## APPENDIX B - Resolutions

### RESOLUTION OF THE POLICY COMMITTEE OF THE LEXINGTON AREA METROPOLITAN PLANNING ORGANIZATION ADOPTION OF THE FY 2017-2020 TRANSPORTATION IMPROVEMENT PROGRAM

WHEREAS, Section 134, Title 23, USC requires a continuing comprehensive transportation planning process be carried out cooperatively in areas of more than 50,000 population; and

WHEREAS, Section 134, Title 23, USC further requires that the urban transportation planning process shall include development of a Transportation Improvement Program (TIP) which shall be a staged multi-year program of transportation improvement projects consistent with the Metropolitan Transportation Plan (MTP) plan; and

WHEREAS, the Lexington Area Metropolitan Planning Organization (MPO) is the officially designated agency for transportation planning in the Lexington Urbanized area and is responsible for developing the TIP; and

WHEREAS, the fiscally-constrained FY 2017–FY 2020 TIP is the short-range element and a subset of the Year 2040 Metropolitan Transportation Plan;

THEREFORE BE IT RESOLVED, that the MPO Policy Committee at its regular public meeting of August 24, 2016, adopts the FY 2017–FY 2020 TIP for the Lexington Urbanized Area.

  
\_\_\_\_\_  
Judge David West, Chair;  
Lexington Area Metropolitan Planning Organization

August 24, 2016  
DATE

  
\_\_\_\_\_  
Barry House, MPO Policy Committee Representative for  
Kentucky Transportation Cabinet - Governor's Designee

August 24, 2016  
DATE



**RESOLUTION OF THE TRANSPORTATION POLICY COMMITTEE**  
**OF THE**  
**LEXINGTON AREA METROPOLITAN PLANNING ORGANIZATION**  
**CERTIFICATION OF THE URBAN TRANSPORTATION PLANNING**  
**PROCESS**

WHEREAS, the Lexington Area Metropolitan Planning Organization (MPO) is the officially designated agency for transportation planning in the Lexington Urbanized area; and

WHEREAS, the federal regulations pertaining to Urban Transportation Planning, published as 23 CFR 450.334, require the MPO and the Kentucky Transportation Cabinet (KYTC) to certify that the transportation planning process be carried on cooperatively in conformance with the regulations; and

WHEREAS, the federal regulations also require that the metropolitan transportation planning process be carried out in accordance with all applicable requirements including:

- (1) 23 U.S.C. 134, 49 U.S.C 5303;
- (2) Sections 174 and 176 (c) and (d) of the Clean Air Act, as amended (42 U.S.C. 7504, 7506 (c) and (d)) and 40 CFR part 93;
- (3) Title VI of the Civil Rights Act of 1964, as amended (42 U.S.C. 2000d-1) and 49 CFR part 21;
- (4) 49 U.S.C. 5332, prohibiting discrimination on the basis of race, color, creed, national origin, sex, or age in employment or business opportunity;
- (5) Section 1101(b) of the "FAST-ACT (Pub. L. 114-94) and 49 CFR part 26 regarding the involvement of disadvantaged business enterprises in USDOT funded projects;
- (6) 23 CFR part 230, regarding the implementation of an equal employment opportunity program on Federal and Federal-aid highway construction contracts;
- (7) The provisions of the Americans with Disabilities Act of 1990 (42 U.S.C. 12101 et seq.) and 49 CFR parts 27, 37, and 38;
- (8) The Older Americans Act, as amended (42 U.S.C. 6101), prohibiting discrimination on the basis of age in programs or activities receiving Federal financial assistance;
- (9) Section 324 of title 23 U.S.C. regarding the prohibition of discrimination based on gender; and

(10) Section 504 of the Rehabilitation Act of 1973 (29 U.S.C. 794) and 49 CFR part 27 regarding discrimination against individuals with disabilities.

WHEREAS, the U.S Department of Transportation conducted an on-site certification review at the Lexington Area MPO offices in June, 2015, and issued a subsequent finding that the Lexington Area MPO was fully certified as meeting all pertinent requirements; and


THEREFORE BE IT RESOLVED, that the Lexington Area MPO Policy Committee at its regular public meeting of August 24, 2016 certifies, in consideration of the requirements listed herein and to the degree appropriate for the size of the area and the complexity of its transportation problems, that the urban transportation planning process is being carried out in conformance with all the applicable federal requirements.

  
\_\_\_\_\_  
Judge David West, TPC Chair;  
Lexington Area Metropolitan Planning Organization

August 24, 2016  
DATE

  
\_\_\_\_\_  
Barry House, MPO Policy Committee Representative for  
Kentucky Transportation Cabinet

August 24, 2016  
DATE

I hereby certify that the foregoing legal requirements have been met as certified by the U.S. Department of Transportation in June of 2015. Max D. Conyers, Lexington Area MPO Director  August 24, 2016

## APPENDIX C - MPO COMMITTEE MEMBERSHIP

### MPO Transportation Policy Committee (TPC)

#### Voting members:

**Mayor Jim Gray**

Lexington-Fayette Urban-Co. Gov.

**Vice-Mayor Steve Kay**

**TPC Vice Chair**, Councilmember-at-Large  
LFUCG Council

**Kevin Stinnett**

Councilmember-at-Large  
LFUCG Council

**Richard Moloney**

Councilmember-at-Large  
LFUCG Council Office

**Shevawn Akers**

Councilmember, 2<sup>st</sup> District  
LFUCG Council  
(Representing districts 1, 2, and 6)

**Fred Brown**

Councilmember, 8th District  
LFUCG Council  
(Representing districts 4, 7, 8)

**Peggy Henson**

Councilmember, 11th District  
LFUCG Council  
(Representing districts 3, 5, 11)

**Amanda Bledsoe**

Councilmember, 10th District  
LFUCG Council  
(Representing districts 9, 10, 12)

**Honorable John S. Roberts**

Fayette County Judge/Executive

**Hon. David West**

**TPC Chair** – Jessamine Co. Judge/Executive

**Mayor Pete Sutherland**

Mayor, City of Nicholasville  
Representative: Bob Amato

**Greg Thomas, KYTC**

Secretary, Kentucky Transportation Cabinet  
Representative: Barry House

**Mayor Harold Rainwater**

City of Wilmore  
Representative: David Carlstedt

**Carrie Butler**

LexTran

**Pam Shepherd**

Federated Transportation Services of the Bluegrass  
(FTSB)

#### Non-Voting Members:

**Thomas Nelson Jr. (Advisory Member)**

Kentucky Division Administrator  
Federal Highway Administration  
Representative: Bernadette Dupont

**Yvette B. Taylor (Advisory Member)**

Region 4, Regional Administrator  
Federal Transit Administration  
Representative: Robert Buckley

## **MPO Transportation Technical Coordinating Committee (TTCC)**

**Stuart Kearns (Chairman)**  
UK Parking & Transportation

**Julia Shaw (Vice-Chair)**  
LFUCG Division of Police

**Jr Ham**  
Kentucky Transportation Cabinet  
District Office 7

**Barry House**  
KYTC Div. of Planning

**Pete Wearstler**  
Bluegrass ADD

**Bob Bayert**  
LFUCG Division of Engineering

**George Thornsby**  
LFUCG Traffic Engineering

**Mark Day**  
Planning & Development  
Bluegrass Airport

**Janice Westlund**  
LFUCG Division of Planning

**Pam Shepard**  
Federated Transit Services of the Bluegrass

**Betty Taylor**  
Jessamine County Planning Commission

**Mary Piekarski**  
McLane Cumberland Trucking

**Jolena Childers**  
AAA Bluegrass Lexington

**Carrie Butler**  
LexTran

**Rhonda Snow**  
WHEELS

**Marcus Dobbs**  
Fayette County Public Schools

**John Gowins**  
Division for Air Quality

**Bernadette Dupont**  
Federal Highway Administration  
Kentucky Division Office

**Dean Anness**  
Planning – City of Nicholasville

**Amy Cloud**  
Jessamine County  
Chamber of Commerce

**Derek Paulsen**  
LFUCG Commissioner of Planning

**Paul Schoninger**  
LFUCG Council Office

**Irene Gooding**  
LFUCG Community Development

**Sally Hamilton**  
LFUCG Chief Administrator's Office

**Doug Trulock**  
United Transportation Inc.

**Gina Hampton**  
Lexington United

# APPENDIX D - Public Notice

## Lexington Herald-Leader Legal Ad

THURSDAY JULY 14 2016  
KENTUCKY.COM

HERALD-LEADER

*Classified*

5C

### Legals & Public Notices

#### THIRTY (30) DAY PUBLIC REVIEW OF THE LEXINGTON AREA METROPOLITAN PLANNING ORGANIZATION'S FY 2017-2020 TRANSPORTATION IMPROVEMENT PROGRAM (TIP)

The Metropolitan Planning Organization (MPO) will have a 30-day public review period for the FY 2017 - FY 2020 Transportation Improvement Program (TIP) beginning July 14, 2016 and ending on August 14, 2016. The MPO is the transportation planning agency that conducts a cooperative transportation planning process for Fayette and Jessamine County. The TIP is a listing of transportation programs and projects for which transportation funds will be used during this four year period. Projects that seek the use of federal transportation funds are required to be in the TIP. The MPO has coordinated with Lextran to ensure that this notice of time established for public review, involvement and comment on the TIP satisfies Federal Transit Administration's Program of Projects (POP) public participation requirements.

The TIP can be reviewed at <http://lexareampo.org> or printed copies and comments sheets are available from 8 a.m. - 4 p.m. Monday through Friday at: 1) the Lexington Area MPO, 101 E Vine St, Room 735, Lexington, KY 40507; or 2) the Nicholasville Planning Commission, Nicholasville City Hall, 517 N Main St, Nicholasville, KY 40356. Printed copies are also available at all Lexington Public Library Branches including Northside, Tates Creek, Beaumont, Central, Eastside, Village and the Jessamine County Public Library, 600 S Main St, Nicholasville during regular library hours.

Written comments on the TIP may be submitted to the MPO at the mailing address listed above or submitted digitally at the email address below. If you are a person with a disability and require assistance to participate in the review process (large print, audio material) or if you would like a translated copy in another language please contact Charles Schaub, Senior Planner, at 859-258-3180. Comments may also be sent by e-mail to [cschaub@lexingtonky.gov](mailto:cschaub@lexingtonky.gov) (SUBJECT: Transportation Improvement Program).

0002561808-01

**LEGALS**

**THIRTY (30) DAY PUBLIC REVIEW OF THE LEXINGTON AREA METROPOLITAN PLANNING ORGANIZATION'S FY 2017-2020 TRANSPORTATION IMPROVEMENT PROGRAM (TIP)**

The Metropolitan Planning Organization (MPO) will have a 30-day public review period for the FY 2017 – FY 2020 Transportation Improvement Program (TIP) beginning July 14, 2016 and ending on August 14, 2016. The MPO is the transportation planning agency that conducts a cooperative transportation planning process for Fayette and Jessamine County. The TIP is a listing of transportation programs and projects for which transportation funds will be used during this four year period. Projects that seek the use of federal transportation funds are required to be in the TIP. The MPO has coordinated with Lextran to ensure that this notice of time established for public review, involvement and comment on the TIP satisfies Federal Transit Administration's Program of Projects (POP) public participation requirements.

The TIP can be reviewed at <http://lexareampo.org> or printed copies and comments sheets are available from 8 a.m. – 4 p.m. Monday through Friday at: 1) the Lexington Area MPO, 101 E Vine St, Room 735, Lexington, KY 40507; or 2) the Nicholasville Planning Commission, Nicholasville City Hall, 517 N Main St, Nicholasville, KY 40356. Printed copies are also available at all Lexington Public Library Branches including Northside, Tates Creek, Beaumont, Central, Eastside, Village and the Jessamine County Public Library, 600 S Main St, Nicholasville during regular library hours.

Written comments on the TIP may be submitted to the MPO at the mailing address listed above or submitted digitally at the email address below. If you are a person with a disability and require assistance to participate in the review process (large print, audio material) or if you would like a translated copy in another language please contact Charles Schaub, Senior Planner, at 859-258-3180. Comments may also be sent by e-mail to [cschaub@lexingtonky.gov](mailto:cschaub@lexingtonky.gov) (SUBJECT: Transportation Improvement Program).

## **Press Release**

July 25, 2016

### **MEDIA CONTACT:**

Charles Schaub  
859-258-3180

### ***Lexington Area MPO seeking public input on Transportation Improvement Program.***

The Lexington Area Metropolitan Planning Organization (MPO) is seeking public input on the FY 2017 – FY 2020 Transportation Improvement Program (TIP).

The MPO is the transportation planning agency for Fayette and Jessamine County and a small portion of Scott County. The TIP is a list of transportation programs and projects that transportation funds will be allocated to during the next four years. Projects that seek the use of federal transportation funds are required to be in the TIP.

Public review and comment on the Transportation Improvement Program will be accepted until August 14, 2016.

The TIP can be reviewed at <http://lexareampo.org/>. Printed copies are also available at all public libraries in Fayette and Jessamine County.

Questions and comments on the TIP may be directed to Charles Schaub with the Lexington Area MPO at [cschaub@lexingtonky.gov](mailto:cschaub@lexingtonky.gov) or 859-258-3180. Written comments may be mailed to the MPO at:

Lexington Area MPO  
101 East Vine Street, Suite 700  
Lexington, KY 40507

## APPENDIX E - Public Comments

- Has the MPO considered adding the Blackford Parkway extension to the TIP's list of projects? I'm concerned that the area's growth coupled with Garrett Morgan Elementary School opening this fall will create serious traffic congestion issues around the Blackford Pkwy – Man O War and Man O War – Polo Club Blvd intersections. The ½ mile connector from Blackford Pkwy to Polo Club Blvd should reduce this and other south-bound traffic issues.
- As many people do, I drive Nicholasville Road. Can a yellow turn signal be added to Malibu/Pasadena Drive? Who do I contact about the speed limit on Redding Road? I think it's a state road. There is a school (Lansdowne Elementary) and a park (Kirklevington) and the speed limit is 35 mph, which I think is way too high with a Kirklevington Park and a School on Redding Road,
- Richmond Rd access from Shriners Ln: I would like and encourage sidewalk installation to improve connectivity, pedestrian safety as well as economic sustainability allowing citizens to walk to shops, employment, bus stops, etc  
Also, I am confused on the West Loudon project from S. Broadway to Limestone? Could you help explain that to me.
- Although I realize I am a few days late, I hope you will accept my concerns about the I-75 Connector. Despite repeated promises, we have yet to hear about the final choice for a route and yet, money continues to be allocated for the project. You've heard all our concerns so many times (and I appreciate the opportunity to voice concerns). This is such a poor use of public money that I am surprised anyone would continue to advocate for it. At some point, discredited projects should finally be eliminated from the planning process. Let that elimination happen now.
- In reviewing the current STIP Draft I see that the I75 Connector project from Nicholasville to Richmond continues to raise its ugly head and is threatening to siphon another \$15million from our already way overspent government. This is an absurd allocation of sparse resources and an insult to every hard working American taxpayer. Stop this nonsense. Too much time and money has been spent on this project. These resources should be spent maintaining, repairing, and improving those much used winding, hilly, dangerous roads and bridges that we all travel every day going to our grocery stores, schools, friends, and businesses in our own communities, not on this way too expensive boondoggle to improve connectivity between Jessamine and Madison Counties that the residents of these counties will use only occasionally. I was discussing this project with Nicholasville mayor Russ Meyer just 3 weeks ago and he assured me this project would never get built. What is with the continued spending of this kind of money on this project? Let the record show that I and virtually all of my friends in Jessamine County are opposed to spending another dime or another minute on this project while we drive narrow dangerous roads within our own communities every day.



- I am writing concerning the proposed I75 Connector Rd. I reside just across the Kentucky River in Clark County on highway 627 and regrettably next to the Allen company's Boonsboro rock quarry.

Upon attending the last public meeting in 2015 in Madison County Kentucky, I learned that there was no discussion or funds placed into this project for improving highway 627. Failing to consider the traffic increase on this major cut off between I75 and I64 is a huge mistake. Travelers on this road now face a serious traffic problem when they approach the Kentucky River from both north and south directions and specifically when heavy trucks are entering and leaving the quarry. Having property that joins Highway 627, I would never want to see this highway any more congested than it is now and I further would not want it to be expanded. However, should this connector Road extend Highway 627 there would be no question that in the near future this highway would need to be improved and another bridge built across the Kentucky River. I implore you to think this project fully through and get other parties to the table and develop a more long range plan than is currently being considered.
- Although I realize I am a few days late, I hope you will accept my concerns about the I-75 Connector. I recently had my home built here on Carvers Ferry Road and I did so because I want my 2 children to grow up out here in the country and I am an Iraq War veteran with PTSD. Living in the city was a nightmare. I am finally in a quiet place that doesn't trigger my anxiety. Now I learn that a road could destroy that. Despite repeated promises, we have yet to hear about the final choice for a route and yet, money continues to be allocated for the project. You've heard all our concerns so many times (and I appreciate the opportunity to voice concerns). This is such a poor use of public money that I am surprised anyone would continue to advocate for it. At some point, discredited projects should finally be eliminated from the planning process. Let that elimination happen now.
- As a tax payer and longtime resident of Central Kentucky I am writing to express my continuing opposition to the proposed I-75 connector between Nicholasville and Madison County. That \$15 million is earmarked for the continuation of such a destructive, low ROI project in today's economic climate is simply incomprehensible. As a marketing professional I am well aware of the fact that tourism is Kentucky's signature industry creating a colossal impact that trickles through our entire economy. The impact numbers in the recently released study conducted for the Tourism, Arts & Heritage Cabinet by Certec, Inc. tell an impressive story. The tourism and travel industry contributed nearly \$11.7 billion to Kentucky's economy in 2011. Direct expenditures by tourists accounted for \$7.4 billion of this total. The 2011 tourism industry generated over \$1.224 billion in tax revenues to government – \$1.06 billion to the state and \$157.5 million locally. Scenic beauty is invariably cited as the number one reason visitors come to Kentucky. And visitors mean jobs -- a total of 169,932 jobs in Kentucky resulted from the industry in 2011 and direct expenditures from tourists created 118,917 of these jobs. The tourism-generated jobs provided over \$2.6 billion in wages to Kentucky workers. In 2011, total travel expenditures in Jessamine County totaled \$83,635,372 and in Madison County, \$154,300,628. I find it hard to understand why elected officials in these counties, rather

than focusing on enhancing their appeal to visitors are actually bent on destroying the very Bluegrass countryside that puts our state on the world tourism map. And why, rather than working to capture even more visitor revenue, they seem intent on squandering \$350 million of taxpayer dollars on a road that will, at best, save truckers a mere 15 minutes in travel time. The unspoiled beauty of the Kentucky countryside attracts visitors from around the country and across the globe. What a shame we appear to have elected the few people who appear to be immune to its charm – and blind to its value. I trust you will do the right thing and pull the plug on this ill-considered project before it wastes any more money our economically strapped state can ill afford to squander. It's time to finally put a stake through the heart of the vampire road.

- Stop the I-75 connector project. Use the monies for this project to improve other roads and repair necessary bridges.
- This is a waste of money and will bring lots of unwanted traffic thru a very rural community causing many to have to uproot and leave their childhood homes. My entire family grew up in this area and many will lose land that has been in their family for generations I75 is fine the way it is without taking more farmland and killing more animals.
- As a tax paying citizen of this great country I'd like to express my opposition to the proposed monies spent/will spend for the I-75 Connector in Jessamine (and Madison) Co - - this is a total waste of taxpayer money, a waste of government time and effort spent on this proposal where the monies could be spent more wisely on existing infrastructure in need of critical repairs and improvements, this would destroy forever natural landscapes, historical places and critical farmland for future generations. This is an extremely and horrendously bad idea from start to end and I'm hoping that "BIG Government" will listen to the people living, working and enjoying the beautiful land that this proposed road would destroy. Please let's take this proposed road issue off the planning books once and for all and use the funds more wisely on much bigger and pressing issues.
- The proposed I-75 connector is an egregious waste of tax payer money that could be better spent on meeting Kentucky's pressing education needs than on an expensive gift to the City of Nicholasville.
- I am writing to you to express my opposition to the proposed connector road between Nicholasville and I-75 in Madison County. I have been to numerous public meetings about this project and have gathered quite a bit of information concerning it. The most recent estimates I have seen (at least a year ago) would put the cost of this project in excess of \$450. million dollars. The principal justification I have seen for this road is that it would save about 15-20 minutes travel time between Nicholasville and I-75. For that amount of tax dollars in an era when we are not maintaining the infrastructure that we have it seems at best a flimsy justification for this project. What's more, this road would necessitate building bridges over the ecologically sensitive Kentucky River Palisades area and over the equally sensitive and beautiful Marble Creek area. Enough of our tax dollars have been wasted on this project already. The time has come to end this ill-conceived idea once and for all.

- I apologize if this note is a few days past the deadline for comments but I have been out of town and have only now been able to send a response. I would like to express my opposition to the I-75 Connector Plan that the Transportation Improvement Plan may be considering that the state of Kentucky is also considering. At a time when infrastructure repairs are badly needed in Kentucky for existing roads and bridges, at a time when money is sorely needed in the teacher retirement fund, at a time when services for those in need of health care are being slashed, it seems ill advised to spent tens of millions for planning, then hundred of millions of dollars on construction for a project that will benefit very few people and all in the name of saving up to ten minutes of driving time. I strongly suggest this money be put to better use on other highway projects. This project will also cause extensive damage to the natural landscape and historic sites along Marble Creek, the Kentucky River Palisades, and in Fayette, Madison and Jessamine Counties. It will also disrupt a rural landscape that is part of the charm and attraction of Central Kentucky. The planning and discussion of this project was supposed to include a certain amount of transparency and openness to the public for input. But it seems if specific sums of money are already being suggested by the state before there has been any input, perhaps a bit of window cleaning needs to take place so the taxpayers can have a better view. Please pass along this feedback to the group making these preliminary plans on this project and thank you for your time.
- Hello, I am a resident of Jessamine County on Spurlock Lane. The connector will not be near my residence, but I understand you were interested in comments about the road. I am very much opposed to the road. Funding to even study further seems such a waste of our hard earned taxpayer dollars. The roads in Jessamine county would benefit from some of the dollars allocated to such an unnecessary and wasteful proposal. I found a statement in the Summer 2106 Jessamine Matters, page 3, attributed to an unnamed Jessamine County Judge/Executive "...Those roads and bridges are now getting older and falling in disrepair. At the same time, our county budget is under a tremendous strain, so we are working to do more with less."

## APPENDIX F - Abbreviations & Acronyms

5303 – FTA – Metropolitan Transportation Transit Planning Program  
5307 – FTA – LexTran Operating Expenditures  
5309 – FTA – LexTran Capital Expenditures  
5310 – FTA – Elderly and Persons with Disabilities Program  
5311 – FTA – Non-Urbanized (Rural) Area Program  
5337 – FTA – State of good repair  
5339 – FTA – Busses and bus facilities  
AADT – Annual Average Daily Traffic, expressed in vpd (vehicles per day)  
ADA – Americans with Disabilities Act of 1990 and ADA Amendments Act of 2008  
AQAC – Air Quality Advisory Committee  
BGADD – Bluegrass Area Development District  
BPAC – Bicycle and Pedestrian Advisory Committee  
BPMP – Bicycle and Pedestrian Master Plan  
BRO – Federal Bridge Replacement on Federal System  
BRX – Federal Bridge Replacement off Federal System  
BRZ – Federal Bridge Replacement Local System  
BUS – Bluegrass Ultra Transit Service  
CAAA – Clean Air Act Amendment of 1990  
CATS – Campus Area Transit System at University of Kentucky  
CBD – Central business district, a land use type used in modeling  
CCR – Critical Crash Rate  
CFR – Code of Federal Regulations  
CMAQ – Congestion Mitigation and Air Quality Improvement  
CMC – Congestion Management Committee  
CMP – Congestion Management Process  
CR – County Road  
CTPP – Census Transportation Planning Package  
Construction (C) – Project Construction Phase  
DBE – Disadvantaged Business Enterprise  
DOT – U.S. Department of Transportation  
DESIGN (D) – Project Design Phase  
E + C – existing road network and committed projects  
EPA – United States Environmental Protection Agency  
FAST ACT – Fixing America’s Surface Transportation ACT  
FHWA – Federal Highway Administration  
FR – Federal Register  
FTA – Federal Transit Administration  
FTSB – Federated Transportation Services of the Bluegrass  
FY – Fiscal Year  
GHG – Greenhouse Gas Emissions  
GPS – Global Positioning System  
HPP – High Priority Projects  
HSIP – Safety – Highway Safety Improvement Program  
HUD – U.S. Department of Housing and Urban Development  
IM – Interstate Maintenance

ITN of the Bluegrass – An affiliate of the Independent Transportation Network America  
ITS – Intelligent Transportation System  
IVR – Interactive Voice Response  
JARC – Jobs Access & Reverse Commute  
KTC – Kentucky Transportation Center  
KYD – Demonstration Funds to Kentucky  
KYTC – Kentucky Transportation Cabinet  
LEP – low English proficiency  
LFUCG – Lexington Fayette Urban County Government  
LOS – Level of Service  
MAP-21 – Moving Ahead for Progress in the 21<sup>st</sup> Century Act of 2012  
MPO – Metropolitan Planning Organization  
MSA – Metropolitan Statistical Area  
MSAT – Mobile Source Air Toxics  
MTP – Metropolitan Transportation Plan  
NAAQS – National Ambient Air Quality Standards  
NEPA – National Environmental Protection Act  
NH – Federal National Highway System  
NHS – National Highway System  
NHTS – National Household Travel Survey  
NTMP – Neighborhood Traffic Management Program  
POP – Program of Projects  
PP – Participation Plan  
ROW (R) – Project Right of Way Phase  
RRP – Safety – Railroad Protection  
RRS – Safety – Railroad Separation  
SAF – Federal Safety  
SIP – State Implementation Plan (for air pollutants)  
SLX – Surface Transportation Program – Lexington  
SP – State Construction Program  
SPB – State Construction Bonds Program  
SPP – State Construction High Priority Projects  
SRTS – Safe Routes to School  
STIP – Statewide Transportation Improvement Program  
STP – Surface Transportation Program  
TAP – Transportation Alternative Program  
TAZ – Traffic Analysis Zone  
TCM – Transportation Control Measure  
TCSP – Transportation & Community System Preservation Funds  
TDM – Travel Demand Model or Transportation Demand Management  
TE – Transportation Enhancement Projects  
TIP – Transportation Improvement Program  
TMA – Transportation Management Area (an MPO with a population over 200,000)  
TPC – the MPO Transportation Policy Committee  
TSC – Traffic Safety Coalition  
TTCC – the MPO Transportation Technical Coordination Committee

