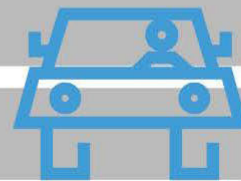
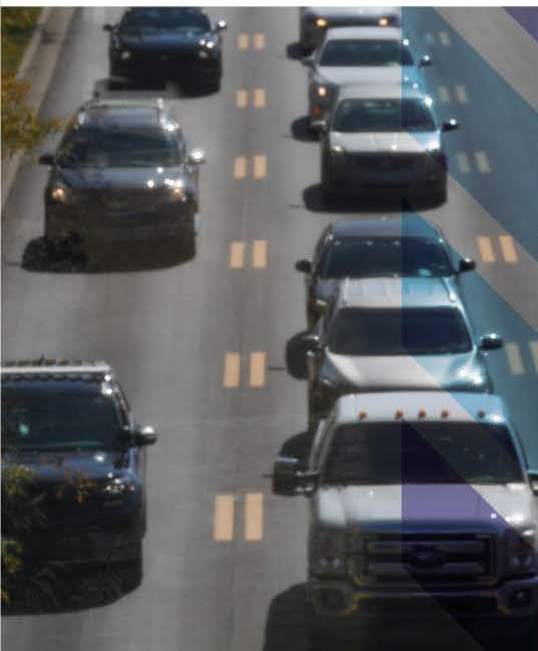
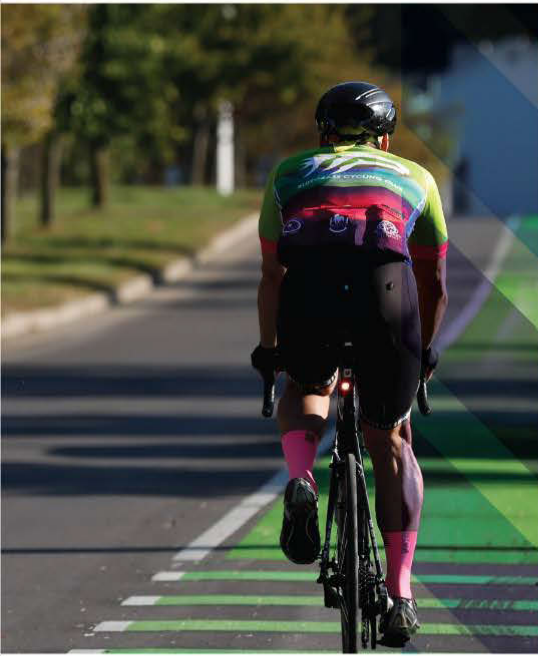
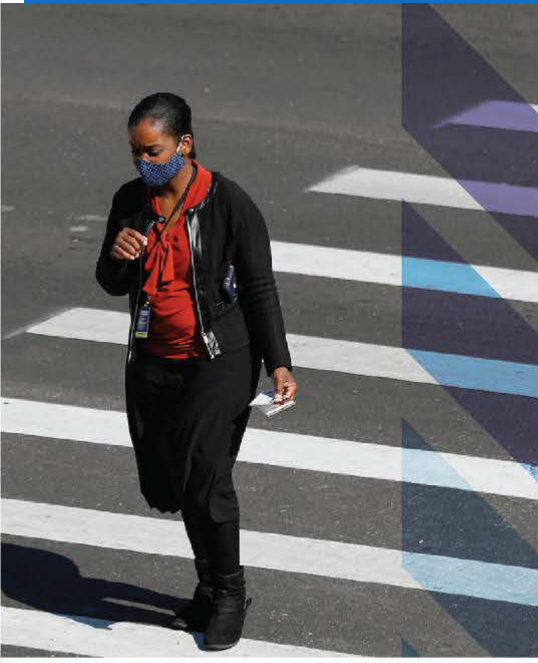


UNIFIED PLANNING WORK PROGRAM

FISCAL YEAR 2025

*Transportation
Planning for Fayette
and Jessamine Counties*

Adopted by the Lexington Area MPO
Transportation Policy Committee:
April 24, 2024



Lexington Area Metropolitan Planning Organization
101 East Vine Street, Lexington, KY 40507
www.LexAreaMPO.org

This Unified Planning Work Program is financed in part by the following:

US Department of Transportation: Federal Highway Administration (FHWA)

US Department of Transportation: Federal Transit Administration (FTA)

Kentucky Transportation Cabinet (KYTC)

Lexington Fayette Urban County Government (LFUCG)

INTRODUCTION

ABOUT THE MPO	4
MPO PLANNING AREA	5
MPO ORGANIZATIONAL STRUCTURE	6
ABOUT THE UNIFIED PLANNING WORK PROGRAM	7
PLANNING FACTORS	7
FHWA & FTA PLANNING EMPHASIS AREAS FOR FY 25	8
WORK PROGRAM HIGHLIGHTS	11
FY 2024 UPWP ACCOMPLISHMENTS	11
UPWP PRIORITIES FOR FY 2025	12

WORK PROGRAM ELEMENTS

1.0	TRANSPORTATION SYSTEM DATA & MONITORING	13
2.0	PROJECT IDENTIFICATION & PRIORITIZATION	15
3.0	PROGRAM & PROJECT IMPLEMENTATION	17
4.0	LAND USE & TRANSPORTATION IMPACT	20
5.0	PARTICIPATION & OUTREACH	21
6.0	PROGRAM ADMINISTRATION	23
	SUMMARY OF WORK ELEMENTS BY FUNDING SOURCE	25
	SUMMARY OF MPO STAFF MONTHS BY ELEMENT	25

STUDIES & PLANS

	COMPLETE STREET DESIGN STANDARDS	26
	NICHOLASVILLE RD TRANSPORTATION FEASIBILITY STUDY, TRAFFIC & TRANSIT ANALYSIS	27
	SUMMARY OF STUDIES & PLANS BY FUNDING SOURCE	28

FINANCIAL SUMMARY

	SUMMARY OF ALL MPO ACTIVITIES BY FUNDING SOURCE	29
--	---	----

APPENDIX

	LEXINGTON AREA MPO RESOLUTION APPROVING THE FY 25 UPWP	31
	LEXINGTON AREA MPO PLANNING AGREEMENT (MOA)	33

INTRODUCTION

ABOUT THE MPO

Federal law requires all US Census defined urbanized areas with populations greater than 50,000 to designate a Metropolitan Planning Organization (MPO) to develop transportation plans for the region. Urbanized areas with populations over 200,000 are designated as Transportation Management Areas (TMA) which carry additional planning and funding requirements. The Lexington Area MPO consists of Fayette and Jessamine County which includes the cities of Lexington, Nicholasville and Wilmore. The 2020 U.S. Census removed a small densely populated portion of Scott County from the Lexington urbanized area which was previously considered part of the MPO planning area. Outside of this contraction, the Census Bureau did not add any other areas to the Lexington urbanized area outside of those currently represented by the MPO.

MPOs ensure that local people and governments are represented in an impartial setting in an effective transportation planning process. To that end, each MPO collaborates with federal, state and local governments, transit agencies, stakeholders and the public to ensure transportation policies, plans, projects and programs move the region forward based on mutually agreed upon goals.

The MPO is responsible for four major transportation planning documents that are regularly “Certified” by the Federal Highway Administration (FHWA). These documents guide the allocation and expenditure of federal transportation dollars in our region.

Unified Planning Work Program	Participation Plan	Transportation Improvement Program	Metropolitan Transportation Plan
<ul style="list-style-type: none">• Outlines the work activities of the MPO• Updated annually	<ul style="list-style-type: none">• Outlines strategies for effective public and stakeholder involvement• Updated as needed or at least every 5 years	<ul style="list-style-type: none">• Short range implementation plan for projects and programs (4 year horizon)• Updated every 4 years (modified as needed)	<ul style="list-style-type: none">• Long range transportation plan for the region• Planning horizon of 25 years• Updated every 5 years (modified as needed)

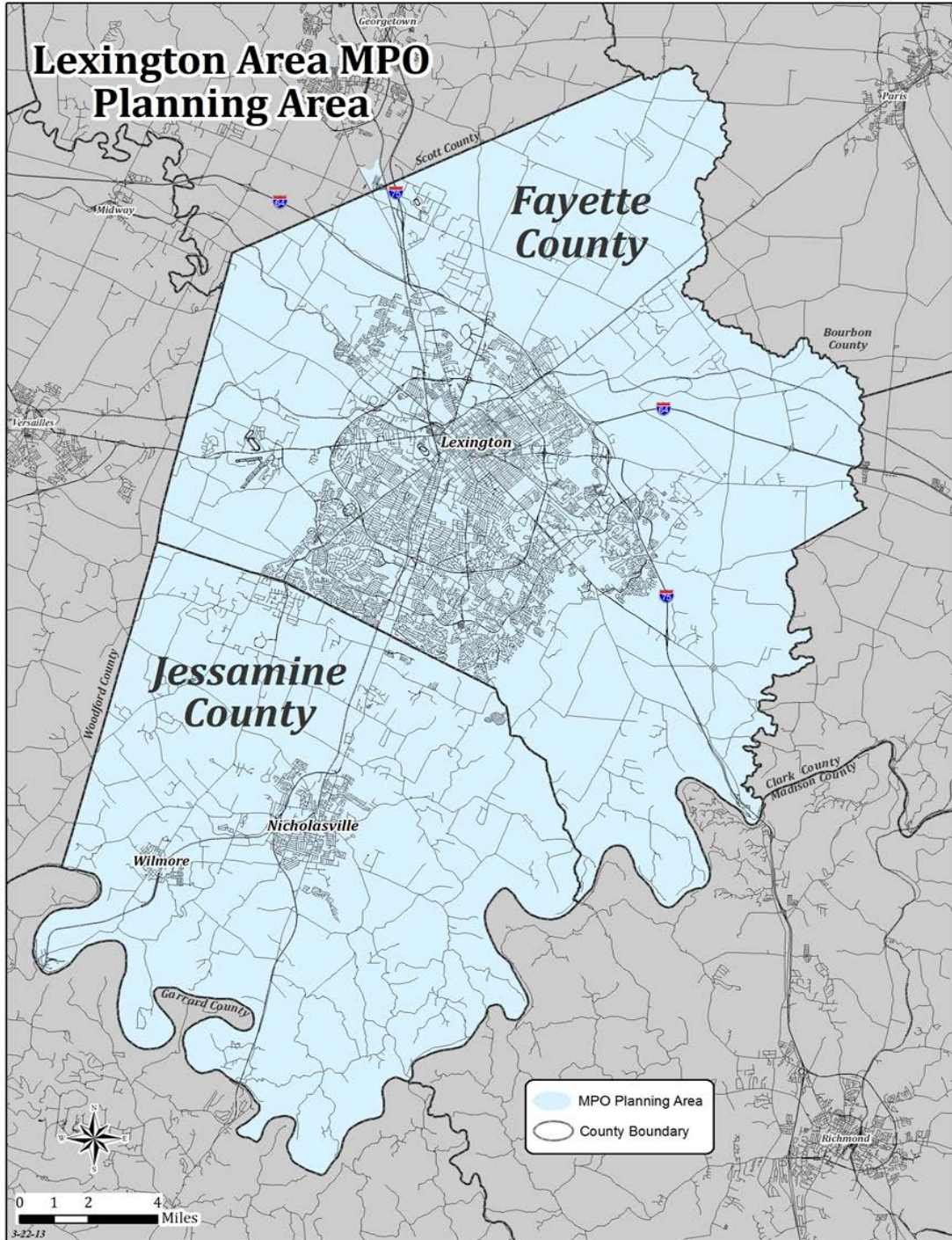
MPOs are charged with developing documents, plans and programs utilizing the 3Cs approach:

Continuing: Planning must be maintained as an ongoing activity and should address short-term needs and a long-term vision for the region.

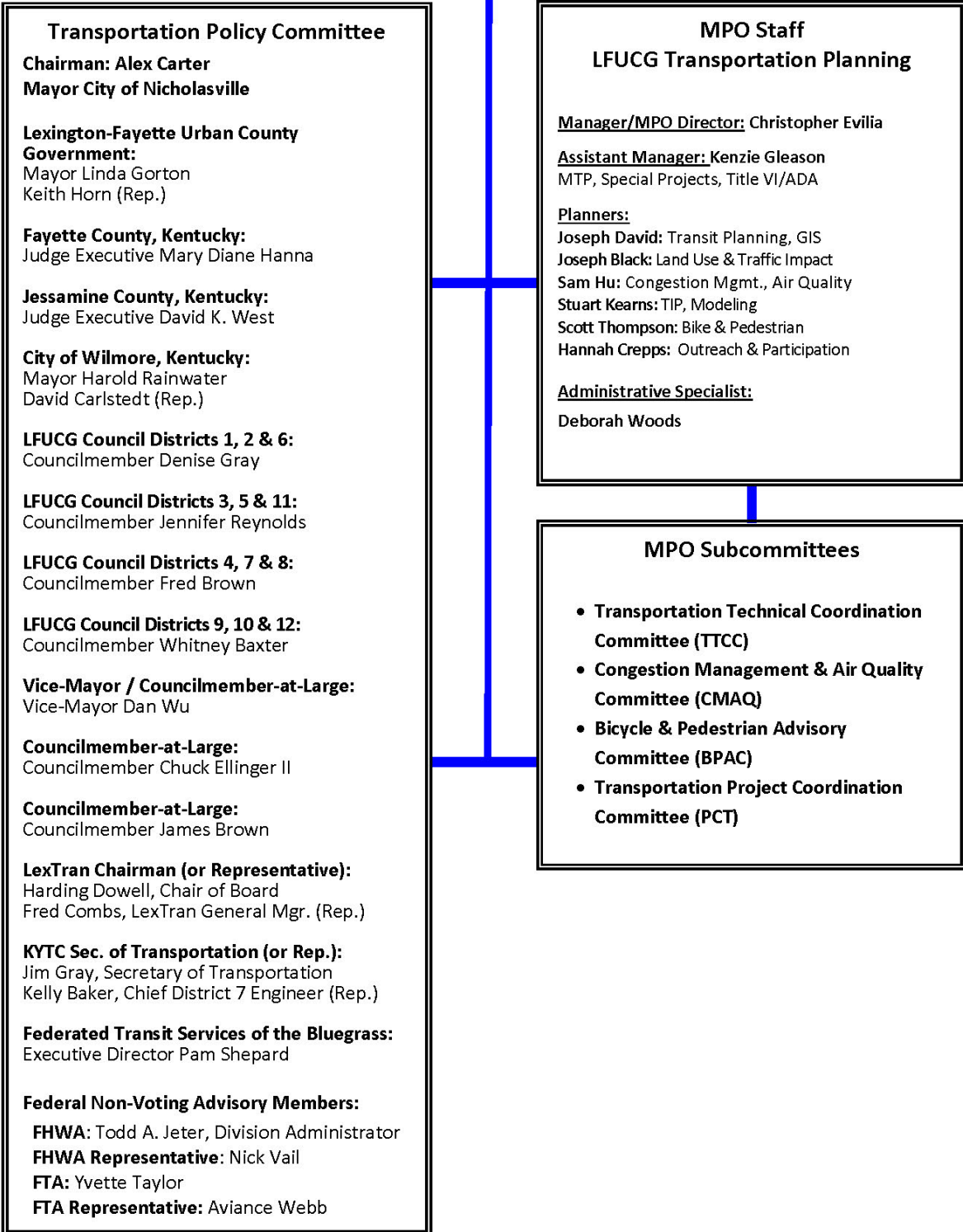
Cooperative: The process must involve a wide variety of stakeholders and interested parties through a participation process.

Comprehensive: The process must cover all surface transportation modes and be consistent with regional and local land-use and economic-development.

The MPO functions under a committee structure with a decision-making Transportation Policy Committee (TPC), technical committees, and technical staff. The Lexington Area MPO Memorandum of Agreement (MOA) describes the MPO's organizational structure, partner responsibilities, planning policies, and procedures.



Lexington Area Metropolitan Planning Organization (MPO) Organizational Structure



ABOUT THE UNIFIED PLANNING WORK PROGRAM

The UPWP is a federally required document that communicates to the public and stakeholders how their federal transportation planning dollars will be used on regional planning activities over the coming year. It describes how the MPO will carry out the transportation planning process including related planning activities, studies, products and timelines. It also outlines expenditures attributed to individual work elements and the funding sources to be used. The current federal regulations that guides MPOs in developing an annual UPWP include 23 USC 134 (a); 49 USC 5303(a) & (b); 23 CFR 420.111; 23 CFR 450.308; and 49 CFR 613.

PLANNING FACTORS

The “Infrastructure Investment and Jobs” Act (IIJA) or sometimes referred to as the “Bipartisan Infrastructure Law” (BIL) was signed into law on November 15, 2021 and authorizes federal surface transportation programs through FY 2026. The IIJA reestablished ten planning factors that MPOs must consider when developing transportation plans and programs to ensure consistency with established national goals including:

- Support the economic vitality of the metropolitan area, especially by enabling global competitiveness, productivity, and efficiency.
- Increase the safety of the transportation system for motorized and non-motorized users.
- Increase the security of the transportation system for motorized and non-motorized users
- Increase the accessibility and mobility options available to people and for freight.
- Protect and enhance the environment, promote energy conservation, improve quality of life, and promote consistency between transportation improvements and State and local planned growth and economic development patterns.
- Enhance the integration and connectivity of the transportation system, across and between modes, for people and freight.
- Promote efficient system management and operation.
- Emphasize the preservation of the existing transportation system.
- Improve the resiliency and reliability of the transportation system and reduce or mitigate storm water impacts of surface transportation.
- Enhance travel and tourism.

To accomplish these goals the MPO has organized our work into six focus areas:

- 1.0** Transportation System Data & Monitoring
- 2.0** Project Identification & Prioritization
- 3.0** Program & Project Implementation
- 4.0** Land Use & Traffic Impact
- 5.0** Participation & Outreach
- 6.0** Program Administration

FHWA & FTA PLANNING EMPHASIS AREAS FOR FY 25

The Federal Highway Administration and Federal Transit Administration periodically issue Planning Emphasis Areas (PEAs) for MPO’s to include in their work program to further implement federal priorities of the IJA. In FY 25, these include:

Planning Emphasis Area	Work Task	Work Elements
<p>Tackling the Climate Crisis – Transition to a Clean Energy, Resilient Future</p>	<ul style="list-style-type: none"> • Coordinate with KYTC and Lextran to monitor and report on national Transportation Performance Management metrics and progress toward meeting the established targets for safety, infrastructure condition, system performance, greenhouse gas emissions (pending federal ruling), transit asset management and transit safety. • Participate in the development of a Climate Pollution Reduction Plan for the Lexington Area. This will include strategies to reduce greenhouse gas emissions to achieve national climate change goals. • Identify and prioritize projects for sub-allocated Carbon Reduction Program that reduce carbon emissions and help achieve national greenhouse reduction goals. • Participate in developing LFUCG’s Urban Growth Master Plan to advise on transportation-related needs and strategies to achieve Net Zero emissions by 2050. • See also Complete Street tasks below that seek to reduce greenhouse gas emissions. 	<p>1.0, 2.0, 3.0 & 4.0</p>
<p>Equity and Justice 40 in Transportation Planning</p>	<ul style="list-style-type: none"> • Update and maintain the MPO’s equity maps developed from US Census data to identify concentrations of Title VI, Environmental Justice (EJ) communities and Limited English Proficiency individuals in the MPO area. • Utilize the MPO’s Census-based equity maps to evaluate the priority, distribution and impact of transportation improvements and services when developing, modifying and amending the MPO’s MTP and TIP. • Work with federally-funded transit agencies including Lextran and their paratransit service provided by RATP Dev (Wheels), Federated Transit Services of the Bluegrass (FTSB), and Blue Grass Community Action Partnership (BGCAP) to implement and expand public transit programs and projects in the Lexington area, with an emphasis on disadvantaged communities. • Strategically target participation and outreach efforts to engage Title VI, LEP individuals and other disadvantaged communities as outlined in the Participation Plan and Title VI Program Plan. 	<p>1.0, 2.0, 3.0 & 4.0</p>

	<ul style="list-style-type: none"> • Participate in developing a regional Coordinated Public Transit-Human Services Transportation Plan to improve transportation services and mobility for persons with disabilities, older Americans, and individuals with lower incomes. • See also Complete Streets tasks below emphasizing disadvantaged communities. 	
Complete Streets*	<ul style="list-style-type: none"> • Coordinate with area stakeholders to implement the LFUCG Complete Streets Action Plan. • Coordinate with LFUCG to update roadway design standards to align with Complete Street best practices. • Coordinate with various agencies to implement projects identified in the MPO’s Regional Bicycle & Pedestrian Plan, with an emphasis on Complete Street projects in disadvantaged communities. • Work with KYTC to incorporate recommendations from the Lexington Safety Action Plan for Fayette County into the MPO’s MTP & TIP, with an emphasis on disadvantaged communities. • Work with KYTC and LFUCG to implement the Safe Streets for Lexington discretionary grant that was awarded to LFUCG in 2024. • Work with KYTC, LFUCG and other partners to establish a safety-focused work group to evaluate and address safety issues that are identified by the work group, through data analysis, or within the Safety Action Plan for Lexington and/or Jessamine County. • Establish a Vision Zero Coordinator position within LFUCG’s Transportation Planning section to focus on safety-based initiatives and coordinate with the MPO. The position will be grant funded through the SS4A program for a period of 5 years. • Assist in developing and updating local design and maintenance standards for pedestrian and bicycle facilities to create more Complete Streets. <p><i>*Note: Expenditures on Complete Street planning activities will exceed the required 2.5% of PL funding that MPO’s are required to dedicate to Complete Streets.</i></p>	2.0 & 3.0
Public Involvement	<ul style="list-style-type: none"> • Implement strategies within the Participation Plan which include integration of Virtual Public Involvement (VPI) tools into the overall public involvement approach, as well as methods to reach individuals without access to computers and mobile devices. 	5.0
Strategic Highway Network (STRAHNET) / US Dept of	<ul style="list-style-type: none"> • Ensure that projects within the 2050 MTP and TIP that involve STRAHNET routes (I-64 & I-75) are prioritized and coordinated with Department of Defense agencies, as appropriate. 	2.0 & 3.0

Defense Coordination		
Federal Land Management Agency (FLMA) Coordination	<ul style="list-style-type: none"> • Ensure that projects in the 2050 MTP and TIP that involved federal lands are coordinated with Federal Land Management Agencies and are prioritized, as appropriate. Coordinate with Federal Land Management Agencies to identify challenges and opportunities regarding access to federal lands. 	2.0
Planning & Environmental Linkages (PEL)	<ul style="list-style-type: none"> • Ensure that MPO project selection criteria for the MTP and TIP consider the environmental, community, and economic goals identified in these local Comprehensive, Small Area and Corridor Plans and that environmental considerations are included early in the planning process. 	2.0, 3.0 & 4.0
Data in Transportation Planning	<ul style="list-style-type: none"> • Conduct an inventory of transportation-related data that is available for the region and facilitate a dialogue with the various agencies to identify opportunities for data sharing. 	1.0

LEXINGTON AREA MPO WORK PROGRAM HIGHLIGHTS

The following list summarizes major work efforts and tasks that were initiated or completed by the Lexington Area MPO during FY 2024. MPO priorities for the upcoming FY 2025 Work Program are summarized on the following page.

FY 2024 UPWP ACCOMPLISHMENTS

- **2050 Metropolitan Transportation Plan** – Completed the 2050 Metropolitan Transportation Plan update to guide transportation investments, policies and priorities for the Lexington Area.
- **KYTC Six Year Highway Plan & SHIFT Program** - Coordinated with KYTC to identify and prioritize projects for inclusion in the 2024 State Highway Plan.
- **Transportation Improvement Program** – Processed amendments and modifications to the FY2021-2024 Transportation Improvement Program to advance priority transportation projects.
- **Safe Streets for Lexington Discretionary Grant Award** – Successfully coordinated with KYTC and LFUCG to submit and secure a Safe Streets for All (SS4A) discretionary grant for Lexington.
- **Campus to Commons Trail Connectivity Safety Study** – Completed study in partnership with the University of Kentucky to evaluate cross-town bicycle & pedestrian improvements from the Turner Commons development in the Meadowthorpe neighborhood to the University of Kentucky Campus.
- **Nicholasville Road Transportation Feasibility Study, Traffic & Transit Analysis** – Continued coordination with KYTC and Lextran to evaluate various design concepts identified within the Imagine Nicholasville Road and Congestion Management Study.
- **Imagine Lexington** – Coordinated and supported LFUCG in developing the Imagine Lexington Comprehensive Plan.
- **Complete Streets Action Plan** - Coordinated with LFUCG Mayor’s Office and Council to develop a Complete Streets Action Plan for Lexington. The plan identifies tasks, timelines and responsible agencies to create more Complete Streets within the Lexington Area.
- **Lexington Bicycle Map** – Updated the print and digital interactive map which allows residents to plan bicycle routes based on location, type of bicycle facility and their individual skill and comfort level.
- **Shared Mobility Vehicle Program** – Administered Shared Mobility Vehicle permits, managed current licensees, and oversaw associated data collection and enforcement.
- **Participation & Outreach** – Conducted an outreach campaign to promote alternative transportation modes and safety awareness for driver, pedestrians and bicyclists.
- **Annual Work Plans & Reporting** – Developed the MPO’s Unified Planning Work Program; Annual Performance and Expenditure Report & Annual Listing of Obligated Projects.

UPWP PRIORITIES FOR FY 2025

- **Transportation Improvement Program** - Develop the FY 2025-2028 TIP including reconciliation with the enacted 2024 State Highway Plan.
- **Travel Demand Forecasting Model** – Complete a major update of the Lexington Area Travel Demand Forecasting Model.
- **Lexington Safety Action Plan** – Coordinate with LFUCG and KYTC to implement recommendations from the Safety Action Plan.
- **Vision Zero Coordinator** Establish a new position within the MPO/LFUCG to provide focus and coordination on safety initiatives.
- **Roadway Safety Public Education Campaign** - Coordinate with LFUCG to conduct a robust roadway safety education campaign.
- **Complete Streets Action Plan** - Coordinate with LFUCG to implement the Complete Streets Action Plan.
- **Complete Streets Design Manual** – Support LFUCG in a major update to Lexington’s roadway design standards to align them with Complete Street best practices.
- **Land Subdivision Regulation and Zoning Ordinance Amendments** – Continue work with the City of Lexington to develop and implement a series of regulatory changes to local Zoning Ordinances and Subdivision Regulations to achieve desired regional transportation planning outcomes including increased roadway connectivity, walkability, bike-friendly and transit-oriented development.
- **Infrastructure Investment & Jobs Act** - Monitor IIJA guidance and ensure compliance with resulting rules and regulations.
- **Grant / Discretionary Funding Opportunities** - Research, disseminate information and assist local agencies with federal grant applications for bicycle, pedestrian, transit and roadway projects.
- **Participation & Outreach** – Continue collaboration with the City of Lexington’s Division of Environmental Quality to conduct a public information campaign for transportation planning activities, project development, operational improvements and maintenance activities.
- **Annual Work Plans & Reporting** – Develop the MPO’s Unified Planning Work Program, Performance and Expenditure Report, Annual Listing of Obligated Projects & Title VI Program Plan.

1.0 TRANSPORTATION SYSTEM DATA & MONITORING

PURPOSE

To collect and analyze data and track the performance of the transportation system. To monitor transportation trends, rules, regulations and best practices to inform the transportation planning process.

WORK ACTIVITIES

- Compile, analyze and maintain data (including GIS data) for the following:
 - US Census and other demographic/socioeconomic data
 - Population & employment growth
 - Regional travel patterns
 - Roadway characteristics and condition
 - Transit routes and ancillary facilities
 - Inventory of transit assets and condition
 - Bicycle and pedestrian facilities
 - Freight-related data
 - Safety & crash data (including transit safety data)
 - Air quality data (ozone & particulate matter)
 - Congestion data (including travel time reliability and delay)
 - Transportation system usage data (traffic counts, bicycle/pedestrian counts, transit ridership, shared mobility device usage)
- Conduct an inventory of transportation-related data that is available for the region and facilitate a dialogue with the various agencies to identify opportunities for data sharing.
- Coordinate with KYTC and Lextran (5307 recipient) to monitor and report on national Transportation Performance Management metrics and progress toward meeting the established targets for safety, infrastructure condition, system performance, greenhouse gas emissions (pending federal ruling), transit asset management and transit safety. MPO adoption of safety targets and transit asset condition targets must occur annually. Performance targets are set by Lextran and by KYTC and are either supported by the MPO, or the MPO may choose to establish their own targets. In FY 24, MPO-specific targets were established for safety performance measures in support of the MPO's adopted Vision Zero policy.
- Monitor congestion and transportation system performance in accordance with federal planning requirements for a Congestion Management Process (CMP). Work with stakeholder groups to acquire and utilize the best available congestion-related data to inform the CMP.
- Update and maintain the MPO's equity maps developed from US Census data to identify concentrations of Title VI, Environmental Justice (EJ), Underserved and Historically Disadvantaged communities, and Limited English Proficiency individuals in the MPO area. These maps are used to inform project prioritization, project development and targeted outreach efforts.
- Assist Lextran and other federally funded transit entities in the Lexington area with data analysis and mapping.
- Monitor the safety of the transportation system by mapping crash and incident data.

WORK ELEMENTS

- Monitor the security of the transportation system by coordinating with emergency and public safety agencies regarding emergency management operations and disaster preparations.
- Review local air quality monitor readings to track trends and compliance with air quality standards. Monitor federal regulations and court rulings related to a reduction in the PM 2.5 standard and the implications for the MPO’s air quality attainment status. Assess whether a transportation conformity process may be necessary and if so, begin work to accomplish. Assess whether the MPO will need to develop an air quality MOVES model.
- Identify and maintain maps of critical urban freight corridors in the Lexington MPO area in consultation with KYTC.
- Monitor corridors within the National Highway Freight Network and identify freight movements of significance within the MPO area.
- Update roadway functional classification maps in coordination with local and state agencies.
- Conduct a major update to the Lexington Area MPO’s Travel Demand Forecasting Model in cooperation with KYTC.
- Monitor transportation-related rules, regulations, standards/guidelines and best practices.

PRODUCTS*

- Current data sets and GIS layers of transportation-related data (ongoing)
- Current Transportation Performance Management System data for the Lexington area and resolutions in support of statewide or regional performance targets (ongoing)
- Annual adoption of safety targets and transit asset condition targets (annual)
- Updated equity maps (ongoing)
- Updated roadway functional classification maps (ongoing)
- Updated transit-related maps (ongoing)
- Updated Travel Demand Forecasting Model for the Lexington Area (KYTC & MPO; June 2025).

**MPO IS RESPONSIBLE AGENCY UNLESS OTHERWISE NOTED*

Total Staff Months 19.5	FHWA (PL)			FHWA (STBG-SLX)		FTA (5303)		TOTAL
	FHWA (80%)	KYTC (5%)	LOCAL (15%)	FHWA (80%)	LOCAL (20%)	FTA (80%)	LOCAL (20%)	
Personnel	\$90,206	\$5,638	\$16,914	\$38,209	\$9,552	\$21,179	\$5,295	\$186,993
Operating								
Total	\$90,206	\$5,638	\$16,914	\$38,209	\$9,552	\$21,179	\$5,295	\$186,993

2.0 Project Identification & Prioritization

PURPOSE

To identify and prioritize transportation projects and programs that are consistent with regional goals. To maintain a long-range multimodal Metropolitan Transportation Plan (MTP). To ensure projects identified in the MTP are informed by the Congestion Management Process (CMP) and by regional plans that provide additional focus on bicycling, walking, transit, freight and corridor planning.

WORK ACTIVITIES*

- Maintain and implement projects and tasks identified the 2050 Metropolitan Transportation Plan (MTP). Modify and amend the MTP as needed.
- Utilize the MPO's Census-based equity maps to evaluate the priority, distribution and impact of transportation improvements and services when modifying and amending the MPO's 2050 MTP.
- Utilize the MPO's Travel Demand Forecasting Model (TDFM) as necessary when evaluating and advancing projects in the MTP.
- Provide a description of national performance measures and targets in the MTP, including a system performance report.
- Continue to ensure the following is addressed in the 2050 MTP and MPO planning process 1) there are strategies that help achieve national greenhouse gas reduction goals, 2) environmental considerations are included early in the planning process, 3) the MPO involves Federal Land Management and the Department of Defense agencies, as appropriate, in the development of the MTP.
- Work with KYTC to incorporate recommendations from the Lexington Safety Action Plan for Fayette County into the MPO's MTP and TIP, with an emphasis on disadvantaged communities.
- Work with the Bluegrass Area Development District (BGADD) to develop a regional Safety Action Plan, including for Jessamine County (BGADD responsible agency).
- Conduct the Congestion Management Process (CMP) in accordance with all federal requirements. Integrate the CMP documentation into applicable planning documents, including the TIP.
- Identify proposed projects, programs and strategies to reduce congestion and improve system reliability through the Congestion Management Process and incorporate identified projects into the MPO's MTP and TIP.
- Participate in the development of a Climate Pollution Reduction Plan for the Lexington Area (LFUCG Responsible Agency). This will include strategies to reduce greenhouse gas emissions to achieve national climate change goals.
- Update and maintain a list of priority MTP projects in the KYTC Continuous Highway Analysis Framework (CHAF) database for prioritization during the development of the 2026 KYTC Highway Plan.
- Collaborate with KYTC on the Strategic Highway Investment Formula for Tomorrow (SHIFT) process for developing the 2026 KYTC Highway Plan.
- Coordinate with the Lexington Fayette Urban County Government, KYTC and Lextran to jointly maintain the MPO area ITS Architecture.

WORK ELEMENTS

- Monitor current and projected flows of goods within the region, identify freight bottlenecks and opportunities to improve the efficiency of regional goods movement.
- Coordinate with KYTC to update and maintain the Kentucky Freight Plan (KYTC responsible agency).
- Coordinate with Lextran to maintain the regional Coordinated Public Transit-Human Services Transportation Plan to improve transportation services and mobility for persons with disabilities, older Americans, and individuals with lower incomes (Lextran responsible agency).
- Work with Lextran and BGCAP to prioritize and program short and long range transit plans and projects in the TIP and MTP, with an emphasis on improving public transportation options for disadvantaged communities.
- Identify and prioritize projects for sub-allocated Carbon Reduction Program that reduce carbon emissions and help achieve national greenhouse reduction goals.

PRODUCTS*

- MTP administrative modifications and amendments (ongoing)
- Maintained Coordinated Public Transit-Human Services Transportation Plan for the MPO region (Responsible Agency - Lextran)
- CHAF database entries and SHIFT project sponsorships to be utilized by KYTC to develop the Six Year Highway Plan (ongoing)
- Maintained ITS Architecture (ongoing)
- Regional Safety Action Plan that includes recommendations for Jessamine County (Responsible Agency – BGADD)

**MPO IS RESPONSIBLE AGENCY UNLESS OTHERWISE NOTED*

Total Staff Months 15.0	FHWA (PL)			FHWA (STBG-SLX)		FTA (5303)		TOTAL
	FHWA (80%)	KYTC (5%)	LOCAL (15%)	FHWA (80%)	LOCAL (20%)	FTA (80%)	LOCAL (20%)	
Personnel	\$66,759	\$4,172	\$12,517	\$28,278	\$7,069	\$15,674	\$3,918	\$138,389
Operating								
Total	\$66,759	\$4,172	\$12,517	\$28,278	\$7,069	\$15,674	\$3,918	\$138,389

3.0 Program & Project Implementation

PURPOSE

To maintain a short-range Transportation Improvement Program (TIP). To coordinate with state and local agencies on program and project development to implement MPO plans and studies to achieve regional goals and desired outcomes. To identify opportunities to implement MPO projects, plans and programs through community and agency partnerships, grants and other funding programs, and during routine roadway operation and maintenance activities.

WORK ACTIVITIES*

- Develop the FY 2025-2028 TIP, including reconciliation with the enacted 2024 State Highway Plan.
- Modify and amend the TIP as needed to add projects and update project information, phasing and cost estimates.
- Utilize the MPO's Census-based equity maps to evaluate the priority, distribution and impact of transportation improvements and services when developing, modifying and amending the MPO's TIP.
- Ensure the selection of TIP projects includes strategies that 1) help achieve national greenhouse gas reduction goals, 2) address environmental considerations early in the planning process 3) consider the environmental, community, and economic goals identified in these local Comprehensive, Small Area and Corridor Plans.
- Ensure that projects within the TIP that involve STRAHNET routes (I-64 & I-75) are prioritized and coordinated with Department of Defense agencies, as appropriate.
- Ensure that projects within the TIP that involve federal lands are coordinated with Federal Land Management Agencies and are prioritized, as appropriate.
- Provide a description of how projects identified in the TIP are anticipated to provide progress toward achieving national performance measures and targets for safety, infrastructure condition, system performance, greenhouse gas emissions, transit asset management and transit safety.
- Monitor the status of dedicated STGB-SLX, STBG-TA and Carbon Reduction Program (CARB) projects and fund balances. Conduct a call for projects and prioritize them when developing the 2025-2028 TIP.
- Work with KYTC to implement recommendations from the Lexington Safety Action Plan for Fayette County, with an emphasis on disadvantaged communities.
- Work with KYTC and LFUCG to implement the Safe Streets for Lexington discretionary grant that was awarded to LFUCG in 2024.
- Work with KYTC, LFUCG and other partners to establish a safety-focused work group to evaluate and address safety issues that are identified by the work group, through data analysis, or within the Safety Action Plan for Lexington and/or Jessamine County.
- Establish a Vision Zero Coordinator position within LFUCG's Transportation Planning section to focus on safety-based initiatives and coordinate with the MPO. The position will be grant funded through the SS4A program for a period of 5 years.
- Prepare an Annual Listing of Obligated Projects for all federally funded highway and transit projects that were obligated funding in the MPO's TIP during the prior fiscal year.

WORK ELEMENTS

- Research, disseminate information, and assist LPAs with federal grant applications for bicycle, pedestrian, transit and roadway projects.
- Prioritize CMAQ funding applications submitted by LPAs to KYTC within the Lexington Area. Submit rankings to the KYTC, as requested. Assist LPAs with air quality improvement calculations for CMAQ funding applications.
- Utilize the MPO's Travel Demand Forecasting Model (TDFM) to inform project development and design decisions.
- Develop partnerships with public, private and non-profit agencies to advance transportation projects and programs of mutual interest.
- Participate in project development meetings with the KYTC and local public agencies to provide input on projects goals and design alternatives. Evaluate project design concepts for compliance with the MPO's Complete Streets Policy.
- Work with federally-funded transit agencies including Lextran and their paratransit service provided by RATP Dev (Lextran Wheels), Federated Transit Services of the Bluegrass (FTSB), and Blue Grass Community Action Partnership to implement and expand public transit programs and projects in the Lexington area, with an emphasis on disadvantaged communities.
- Coordinate with the City of Lexington, KYTC and Lextran to implement ITS technologies, projects and programs. Approve the annual scope of work for the ITS/CMS program funded through the STBG-SLX program.
- Integrate project recommendations from the Congestion Management / Bottleneck Study into the MTP and TIP in FY 2025 (and beyond).
- Coordinate with various agencies to implement projects identified in the MPO's Regional Bicycle & Pedestrian Plan, with an emphasis on Complete Street projects in disadvantaged communities.
- Coordinate with the City of Nicholasville to implement the Jessamine County School Connector Study.
- Coordinate with state and local agencies to identify opportunities to implement transportation improvement projects and initiatives during routine operation and maintenance activities (ADA and bus stop improvements, lane re-configurations to improve traffic safety and flow, bike lane installations, etc).
- Coordinate with LFUCG stakeholders to implement the Complete Streets Action Plan.
- Coordinate with LFUCG stakeholders to review and update roadway design standards to align with Complete Street best practices (LFUCG Responsible Agency).
- Facilitate the deployment of Shared Mobility Devices and Mobility as a Service initiatives in the Lexington Area.
- Incorporate project recommendations from the Lextran Comprehensive Operational Analysis into the MTP and TIP in FY 2025 (and beyond).
- Coordinate with Lextran to implement improvement projects identified through the Lextran Transit Route Facilities Inventory including ramps/landing pads, connecting sidewalks, signage, shelters, benches and other amenities with an emphasis on disadvantaged communities.
- Coordinate with KYTC to initiate and oversee consultant activities for the Nicholasville Rd Transportation Feasibility Study, Traffic & Transit Analysis (SPR/PL funded) (see Studies).
- Coordinate with the non-profit Via Creative to install artistic bus shelters in the Lexington area.

WORK ELEMENTS

PRODUCTS*

- New FY 2025-2028 Transportation Improvement Program (Q2)
- TIP administrative modifications and amendments (ongoing)
- Annual Listing of Obligated Projects (Q2)
- Attendance at program and project development meetings noted in MPO Quarterly Reports.
- Attendance at coordination meetings to implement MPO plans and related work efforts noted in MPO Quarterly Reports.
- Approved scope of work and agreements for the annual ITS/CMS program (STBG-SLX funds) (LFUCG responsible agency)
- Approved construction designs, encroachment permits and utility relocations for Lextran and Via Creative bus stop improvements (ongoing) (Lextran responsible agency)
- Complete Street Design Manual (LFUCG responsible agency) (Q4)
- Implemented priority Complete Streets tasks per the LFUCG Complete Street Action Plan (LFUCG responsible agency)
- Vision Zero Coordinator position (Q3)
- Funding applications for bicycle, pedestrian, transit & roadway projects submitted by the MPO & partnering agencies (MPO & other responsible agencies as appropriate)
- Completed Nicholasville Rd Transportation Feasibility Study, Traffic & Transit Analysis (KYTC responsible agency with MPO support)
- Prioritized list of CMAQ projects submitted to KYTC (as requested)

**MPO IS RESPONSIBLE AGENCY UNLESS OTHERWISE NOTED*

Total Staff Months	FHWA (PL)			FHWA (STBG-SLX)		FTA (5303)		TOTAL
	FHWA (80%)	KYTC (5%)	LOCAL (15%)	FHWA (80%)	LOCAL (20%)	FTA (80%)	LOCAL (20%)	
23.0								
Personnel	\$99,740	\$6,234	\$18,701	\$42,247	\$10,562	\$23,417	\$5,854	\$206,757
Operating								
Total	\$99,740	\$6,234	\$18,701	\$42,247	\$10,562	\$23,417	\$5,854	\$206,757

WORK ELEMENTS

4.0 Land Use & Transportation Impact

PURPOSE

To ensure local planning goals are integrated into the MPO’s transportation planning process. To support and inform local and regional comprehensive planning and land use development to achieve regional transportation goals including safety, access, equity and system efficiency.

WORK ACTIVITIES*

- Provide transportation planning input into Comprehensive, Small Area and Corridor Plans. Ensure projects and priorities identified within these plans are evaluated in the MPO’s transportation planning process for inclusion in the MTP and TIP.
- Assist LFUCG and Jessamine County with updates to local Comprehensive Plans.
- Participate in developing LFUCG’s Urban Growth Master Plan to advise on transportation-related needs and strategies to achieve Net Zero emissions by 2050.
- Incorporate project and policy recommendations from the Imagine New Circle Road and Imagine Nicholasville Road Coordinated Land Use & Transportation Plans into the MTP and TIP.
- Ensure that MPO project selection criteria for the MTP and TIP consider the environmental, community, and economic goals in local Comprehensive, Small Area and Corridor Plans.
- Work with KYTC to conduct a major update to the MPO’s Travel Demand Forecasting Model in consultation with local planning agencies to ensure that projected population and employment growth identified in local planning documents is incorporated in the TDFM.
- Provide input on Zoning, Subdivision and Development Plan proposals within the MPO area. Coordinate with KYTC District 7, local planning and traffic engineering agencies to develop recommendations on network connectivity; bicycle, pedestrian, transit facilities; access management; and other transportation improvements related to development proposals.
- Review and critique Traffic Impact Studies submitted as part of development applications.
- Recommend and develop regulatory changes to local Zoning Ordinances and Subdivision Regulations to achieve desired regional transportation planning outcomes including increased roadway connectivity, walkability, bike-friendly and transit-oriented development.
- Coordinate with LFUCG to update Lexington’s Subdivision Regulations to comply with the Complete Street Design Manual (LFUCG Responsible Agency).

PRODUCTS*

- Technical memoranda of staff findings on Subdivision, Zoning, Development Plans and Traffic Impact Studies (ongoing)
- Zoning Text Amendments (ZOTAs) and Subdivision Regulation Amendments (SRAs) adopted by local Planning Commissions and City Council (ongoing)
- Updated Lexington Area Travel Demand Forecasting Model including local population and employment estimates (Q4)

**MPO IS RESPONSIBLE AGENCY UNLESS OTHERWISE NOTED*

Total Staff Months 9.0	FHWA (PL)			FHWA (STBG-SLX)		FTA (5303)		TOTAL
	FHWA (80%)	KYTC (5%)	LOCAL (15%)	FHWA (80%)	LOCAL (20%)	FTA (80%)	LOCAL (20%)	
Personnel	\$39,597	\$2,475	\$7,424	\$16,772	\$4,193	\$9,297	\$2,324	\$82,083
Operating								
Total	\$39,597	\$2,475	\$7,424	\$16,772	\$4,193	\$9,297	\$2,324	\$82,083

5.0 PARTICIPATION & OUTREACH

PURPOSE

To engage the public and stakeholders in the transportation planning process in accordance with the MPO's Participation Plan (PP). To conduct outreach campaigns to inform the general public of transportation options available in the Lexington Area and to promote safety across all travel modes.

WORK ACTIVITIES *

- Develop and execute a robust public outreach strategy for the 2025-2028 TIP update.
- Modify the Participation Plan as needed to ensure MPO outreach efforts remain relevant and effective.
- Continue efforts to strategically target outreach efforts to engage Title VI, LEP individuals and other disadvantaged communities as outlined in the Participation Plan and Title VI Program Plan.
- Issue media releases for plan updates, amendments and public meetings.
- Conduct outreach and surveys when developing studies and plans.
- Update the MPO website & maintain the "TIP projects" digital map on the MPO website.
- Update the Lexington Area digital bike map and publish an annual print version.
- Maintain and expand the MPO's public email database and issue notices to the list.
- Utilize social media to share transportation-related information including to the MPO's Facebook and Lex Bike Walk Facebook and Instagram page.
- Attend neighborhood and community-based / non-profit organization meetings to share information about transportation planning activities.
- Respond to public information requests regarding transportation planning activities, projects and programs for roadways, drivers, bicycles, pedestrians and transit users.
- Collaborate with the LFUCG Division of Environmental Quality to conduct a public information campaign for transportation planning activities, project development, operational improvements and maintenance activities. The program will utilize contract/part time personnel and professional services (STBG-SLX funds only).**
- Implement a marketing plan to promote alternative transportation options and to target drivers, pedestrians, bicyclists and scooter users with safety messages. Efforts will include promoting a commuter challenge in FY24, including a digital trip tracking platform (STBG-SLX funds only).**
- Coordinate with LFUCG to conduct a robust roadway safety education campaign being funded by the SS4A grant program (for a period of 5 years). Professional services will be used to develop and implement the campaign.

PRODUCTS*

- Modified Participation Plan as needed (ongoing)
- Updated MPO website (ongoing) and statistics on website page views (quarterly)
- Regular social media updates and statistics on page followers, views and reach (quarterly)
- Press releases issued for appropriate MPO activities (as needed)
- Public meetings and/or surveys to guide MPO products and work (as needed)
- Updated digital bike map (ongoing) and print bike map
- Paid advertising to communicate MPO activities and solicit public comment (ongoing)
- Roadway safety public education campaign (ongoing)

WORK ELEMENTS

* MPO IS RESPONSIBLE AGENCY UNLESS OTHERWISE NOTED

** Operating expenses for MPO marketing and outreach efforts include professional services - graphic design, ad development, outreach coordination; paid advertising (radio/tv/print); subscription to digital commuter challenge & data collection platform; printing, and other related expenses.

Total Staff Months 14.5	FHWA (PL)			FHWA (STBG-SLX)		FTA (5303)		TOTAL
	FHWA (80%)	KYTC (5%)	LOCAL (15%)	FHWA (80%)	LOCAL (20%)	FTA (80%)	LOCAL (20%)	
MPO Personnel	\$56,985	\$3,562	\$10,685	\$24,137	\$6,034	\$13,379	\$3,345	\$118,126
Outreach Personnel & Overtime				\$13,600	\$3,400			\$17,000
Operating				\$244,000	\$61,000			\$305,000
Total	\$56,985	\$3,562	\$10,685	\$281,737	\$70,434	\$13,379	\$3,345	\$440,126

6.0 Program Administration

PURPOSE

To support and manage a continuous, cooperative and comprehensive metropolitan planning process that is compliant with the IIJA to ensure state and local partners remain eligible for federal transportation funds to improve the transportation system. Develop and administer an annual work program and budget, and execute applicable agreements with partner agencies. Provide a trained professional staff to develop MPO products and facilitate MPO committee work.

WORK ACTIVITIES*

- Administer the overall MPO planning process in coordination with local, regional, state and federal partners.
- Monitor state and federal policies, legislation and other transportation information to ensure compliance with all KYTC, FHWA, and FTA requirements and regulations.
- Monitor IIJA guidance and ensure compliance with resulting rules and regulations.
- Manage the implementation of work tasks and budgets outlined in the FY 25 UPWP.
- Prepare and submit Quarterly Reports to KYTC on the progress of FY 25 Work Program activities and related expenditures.
- Prepare and submit an Annual Performance and Expenditure Report to KYTC outlining all FY 24 Work Program activities and related expenditures.
- Develop the FY 26 Unified Planning Work Program.
- Maintain MPO Planning Agreements and update as needed to comply with guidance set forth in the Bipartisan Infrastructure Law (BIL also known as IIJA).
- Provide administrative and technical assistance to the Transportation Technical Coordinating Committee (TTCC), Transportation Policy Committee (TPC), Congestion Management Air Quality Committee (CMAQ), Bicycle Pedestrian Advisory Committee (BPAC) and Project Coordination Team (PCT).
- Participate in KYTC, FHWA and other state and federally required meetings.
- Participate in LFUCG Division of Planning, Planning Commission and Urban County Council meetings to meet LFUCG transportation planning obligations.
- Participate in Jessamine County / Nicholasville Planning, Transportation Task Force and project development meetings.
- Respond to inquiries from various agencies, citizens groups and other stakeholders.
- Administer a competitive project selection process for Lexington Area MPO sub-allocated Surface Transportation Block Grant (STBG-SLX), Transportation Alternatives (STBG-TA) and Carbon Reduction Program (CARB) funding.
- Distribute information to LPAs on KYTC funding application cycles for Congestion Mitigation and Air Quality (CMAQ) and Transportation Alternatives (STGB-TA) and provide technical assistance to applicants.
- Assist Local Public Agencies (LPAs) in complying with federal requirements for STBG-SLX, STBG-TA, CARB and CMAQ funding and to ensure timely progress on implementing awarded projects.
- Maintain and update the MPO's Title VI Program Plan to ensure compliance with Title VI of the Civil Rights Act of 1964, Executive Order 12898: Environmental Justice in Minority and Low

WORK ELEMENTS

Income Populations, and Executive Order 13166: Improving Access to Services for Persons with Limited English Proficiency. Submit the Title VI Program Plan for review and approval by KYTC, FHWA and FTA agencies as requested (annual or triennial).

- Monitor the requirements and status of Local Public Agency ADA Transition Plans.
- Attend relevant transportation-related training programs, courses, conferences, workshops and webinars (out-of-state training to be pre-approved through KYTC and FHWA).
- Procure software, computer hardware, office equipment and office supplies to support the work activities of MPO staff.

PRODUCTS*

- Draft FY-2026 UPWP (Q3)
- Approved FY-2026 UPWP (Q3)
- FY-2025 UPWP Progress Reports (quarterly)
- FY 2024 Annual Performance and Expenditure Report
- Annual Title VI Program Plan (Q4)
- Agendas and Minutes of MPO Committee meetings (monthly to bi-monthly)
- Competitive selection process for STBG-TA funds (as needed)
- Training activities (noted Quarterly Reports)
- Software, computer hardware, office equipment and supplies (as needed)

*MPO IS RESPONSIBLE AGENCY UNLESS OTHERWISE NOTED

Total Staff Months 27.0	FHWA (PL)			FHWA (STBG-SLX)		FTA (5303)		TOTAL
	FHWA (80%)	KYTC (5%)	LOCAL (15%)	FHWA (80%)	LOCAL (20%)	FTA (80%)	LOCAL (20%)	
Personnel	\$106,712	\$6,669	\$20,008	\$45,200	\$11,300	\$25,054	\$6,264	\$221,208
Operating	\$40,000	\$2,500	\$7,500					\$50,000
Total	\$146,712	\$9,169	\$27,508	\$45,200	\$11,300	\$25,054	\$6,264	\$271,208

Note: Operating expenses include professional services for website hosting/maintenance; graphic design services; printing, office supplies and equipment; professional development; software and computer hardware; other related expenses.

WORK ELEMENTS

SUMMARY OF WORK ELEMENTS BY FUNDING SOURCE

WORK ELEMENT	PL PLANNING FUNDS			SLX FUNDS		SEC. 5303 FUNDS		Total All Sources
	FHWA 80%	KYTC 5%	LFUCG 15%	FHWA 80%	LFUCG 20%	FTA 80%	LFUCG 20%	
1.0 Transportation System Data & Monitoring	\$90,206	\$5,638	\$16,914	\$38,209	\$9,552	\$21,179	\$5,295	\$186,993
2.0 Project Identification & Prioritization	\$66,759	\$4,172	\$12,517	\$28,278	\$7,069	\$15,674	\$3,918	\$138,389
3.0 Program & Project Implementation	\$99,740	\$6,234	\$18,701	\$42,247	\$10,562	\$23,417	\$5,854	\$206,757
4.0 Land Use & Transportation Impact	\$39,597	\$2,475	\$7,424	\$16,772	\$4,193	\$9,297	\$2,324	\$82,083
5.0 Participation & Outreach	\$56,985	\$3,562	\$10,685	\$281,737	\$70,434	\$13,379	\$3,345	\$440,126
6.0 Program Administration	\$146,712	\$9,169	\$27,508	\$45,200	\$11,300	\$25,054	\$6,264	\$271,208
TOTAL	\$500,000	\$31,250	\$93,750	\$452,444	\$113,111	\$108,000	\$27,000	\$1,325,555

SUMMARY OF MPO STAFF MONTHS BY ELEMENT

WORK ELEMENT	STAFF MONTHS (9 Staff)	
	MONTHS	PERCENT
1.0 Transportation System Data & Monitoring	19.5	18%
2.0 Project Identification & Prioritization	15.0	14%
3.0 Program & Project Implementation	23.0	21%
4.0 Land Use & Transportation Impact	9.0	8%
5.0 Participation & Outreach	14.5	13%
6.0 Program Administration	27.0	25%
TOTAL	108.0	100%

Complete Street Design Standards (Continuing Project)

SCOPE

In FY 2023, the MPO and City of Lexington adopted Complete Street Policies that direct each agency to utilize best-practice Complete Street design principles and standards when reconstructing streets, building new streets, and maintaining existing streets. This Complete Street Design Standards project will utilize consulting services to review existing LFUCG street design standards and recommend updates to the LFUCG Roadway Manual, Subdivision/Zoning Regulations, and Traffic Management Program Guide to better integrate and align these with current best-practice guidelines and standards.

COST & SCHEDULE

Total cost is \$450,000 using \$360,000 (80%) in federal STBG-SLX funds with LFUCG providing \$90,000 (20%) in matching funds. The project will commence in Q4 of FY 24 and will conclude in Q1 of FY26. The MPO will be the responsible agency. MPO participation in study meetings, reviewing work projects and coordinating with the consulting team will be charged to work element 3.0 Program & Project Implementation.

Nicholasville Rd Transportation Feasibility Study, Traffic & Transit Analysis (Continuing Project)

SCOPE

The Imagine Nicholasville Road (INR) Land Use & Transportation Plan and the Lexington Area Congestion Management Bottleneck Study (CMS), completed in 2021, outline various corridor and intersection design concepts intended to address current and future congestion along Nicholasville Rd. This feasibility study will evaluate the various design and modal concepts in those plans by collecting data for various transportation modes, utilizing a travel demand model, developing traffic simulation models and transit service models in order to evaluate the benefits/impacts to traffic operations and associated multimodal trade-offs given various conceptual designs. It will also utilize a Simplified Trip-on-Projects Software (STOPS) model to evaluate transit ridership for 3 service scenarios and the cost/benefit of proposed transit services. The results of the data-driven study will help decision-makers including the KY Transportation Cabinet, Lexington Area MPO, City of Lexington and Lextran Board of Directors evaluate the cost/benefit of various interventions in terms of congestion, sustainability and equity, and to determine what project concepts they may wish to pursue for future federal highway and transit funding programs, including through the KY State Highway Plan, Lexington Area MPO and Federal Transit Administration.

COST & SCHEDULE

Total cost is study cost is estimated at \$500,000 with the funding breakdown below.

Funding Source	Federal (80%)	Non-Federal (20%)
MPO Planning (PL) funds - discretionary	\$200,000	
- Lexington Fayette Urban County Government		\$25,000
- Lextran		\$25,000
KYTC Statewide Planning & Research (SPR) funds - discretionary	\$200,000	
- KY Transportation Cabinet		\$50,000
Total	\$400,000	\$100,000

The study commenced in FY 23 and will conclude in FY 25. The KYTC is the responsible agency. MPO participation in study meetings, reviewing work projects and coordinating with the consulting team will be charged to work element 3.0 Program & Project Implementation.

STUDIES & PLANS

SUMMARY OF STUDIES & PLANS BY FUNDING SOURCE

Study/Project	Lead Agency	Complete Date	FHWA (PL)		FHWA (SPR)		FHWA (STBG-SLX)		FTA (5303)		TOTAL
			FED	NON FED	FED	NON FED	FED	NON FED	FED	NON FED	
Nicholasville Rd Transportation Feasibility Study, Traffic & Transit Analysis	KYTC	FY24	\$200,000	\$50,000	\$200,000	\$50,000	\$0	\$0	\$0	\$0	\$500,000
Complete Street Design Standards	MPO	FY25	\$0	\$0	\$0	\$0	\$360,000	\$90,000	\$0	\$0	\$450,000
Total			\$200,000	\$50,000	\$200,000	\$50,000	\$360,000	\$90,000	\$0	\$0	\$950,000

DRAFT

FINANCIAL SUMMARY

Work Element / Study	Lead Agency	Complete Date	FHWA PL			SPR FUNDS			STBG-SLX		FTA 5303		EST. COST
			FHWA	KYTC	LOCAL	FHWA	KYTC	LOCAL	FHWA	LOCAL	FTA	LOCAL	
1.0 Transportation System Data & Monitoring	MPO	FY25	\$90,206	\$5,638	\$16,914	\$0	\$0	\$0	\$38,209	\$9,552	\$21,179	\$5,295	\$186,993
2.0 Project Identification & Prioritization	MPO	FY25	\$66,759	\$4,172	\$12,517	\$0	\$0	\$0	\$28,278	\$7,069	\$15,674	\$3,918	\$138,389
3.0 Program & Project Implementation	MPO	FY25	\$99,740	\$6,234	\$18,701	\$0	\$0	\$0	\$42,247	\$10,562	\$23,417	\$5,854	\$206,757
4.0 Land Use & Transportation Impact	MPO	FY25	\$39,597	\$2,475	\$7,424	\$0	\$0	\$0	\$16,772	\$4,193	\$9,297	\$2,324	\$82,083
5.0 Participation & Outreach	MPO	FY25	\$56,985	\$3,562	\$10,685	\$0	\$0	\$0	\$281,737	\$70,434	\$13,379	\$3,345	\$440,126
6.0 Program Administration	MPO	FY25	\$146,712	\$9,169	\$27,508	\$0	\$0	\$0	\$45,200	\$11,300	\$25,054	\$6,264	\$271,208
Nicholasville Rd Transportation Feasibility Study, Traffic & Transit Analysis	KYTC	FY 25	\$200,000	\$0	\$50,000	\$200,000	\$50,000	\$0	\$0	\$0	\$0	\$0	\$500,000
Complete Street Design Standards	MPO / LFUCG	FY25	\$0	\$0	\$0	\$0	\$0	\$0	\$360,000	\$90,000	\$0	\$0	\$450,000
Total			\$700,000	\$31,250	\$143,750	\$200,000	\$50,000	\$0	\$812,444	\$203,111	\$108,000	\$27,000	\$2,275,555



LEXINGTON AREA METROPOLITAN PLANNING ORGANIZATION
Transportation Planning for Fayette and Jessamine Counties

RESOLUTION 2024-4
APPROVAL OF THE FISCAL YEAR 2025 UNIFIED PLANNING WORK PROGRAM (UPWP)

WHEREAS, Section 134, Title 23, USC requires that a continuing, comprehensive transportation planning process be carried out cooperatively in areas of more than 50,000 population; and

WHEREAS, the LEXINGTON AREA MPO Transportation Policy Committee (TPC) is the designated Metropolitan Planning Organization (MPO) for the Lexington, Kentucky urbanized area; and

WHEREAS, 23CFR450 requires MPOs to produce a Unified Planning Work Program (UPWP) to identify planning activities for which federal dollars are intended to be used and the funds necessary to accomplish these activities; and

WHEREAS, the Lexington Area MPO has prepared a UPWP for Fiscal Year 2025 which identifies the regional planning activities intended to be accomplished utilizing federal dollars and the funds necessary to accomplish these activities; and

WHEREAS, the FY 2025 UPWP further identifies work tasks necessary for compliance with planning requirements identified in 23CFR450; and

WHEREAS, the funds provided to the Lexington Area MPO are sufficient to accomplish the planning activities identified within the proposed FY 2025 UPWP; and

WHEREAS, the FY 2025 UPWP has been reviewed by appropriate state and federal agencies for appropriateness and compliance with applicable state and federal requirements.

NOW, THEREFORE BE IT RESOLVED that the Transportation Policy Committee of the LEXINGTON AREA MPO hereby approves the Lexington Area MPO Fiscal Year 2025 Unified Planning Work Program.

Adopted by the LEXINGTON AREA MPO Transportation Policy Committee this 24th day of April, 2024.

Mayor Alex Carter, City of Nicholasville
Lexington Area Metropolitan Planning Organization
Transportation Policy Committee (TPC) Chair

4-24-24

Date

Attest:



Christopher Evilia, AICP
Director, Lexington Area Metropolitan Planning Organization

4/24/24
Date

Lexington Area MPO Planning Agreement (MOA)

MEMORANDUM OF AGREEMENT

By and Between

LEXINGTON AREA METROPOLITAN PLANNING ORGANIZATION

The

TRANSIT AUTHORITY OF LEXINGTON-FAYETTE URBAN COUNTY GOVERNMENT (LEXTRAN)

And the

KENTUCKY TRANSPORTATION CABINET

This Memorandum of Agreement (MOA) is made by and between the Lexington Area Metropolitan Planning Organization (hereinafter referred to as MPO), the Transit Authority of Lexington-Fayette Urban County Government (hereinafter referred to as Lextran), and the Kentucky Transportation Cabinet (hereinafter referred to as KYTC).

Lexington Area MPO Structure

The MPO organizational structure consists of the Transportation Policy Committee (TPC), the Transportation Technical Coordinating Committee (TTCC), and two advisory subcommittees - Congestion Management Air Quality Committee (CMAQ) and Bicycle Pedestrian Advisory Committee (BPAC).

The TPC serves as the decision-making body of the MPO, and has responsibilities including approval of plans, implementation of programs, transportation projects prioritization, provision of transportation planning and guidance, and other similar related actions.

The TTCC serves as an advisory body to the TPC and provides transportation related technical review, guidance and assistance.

The MPO also utilizes specialized advisory committees and working groups which may include members such as transit operators and consumers, bicycle groups, various technical staff, members of MPO committees and other interested parties to help inform and advise the TTCC and TPC.

THE AGENCIES AGREE AS FOLLOWS:

The Lexington Fayette Urban County Government (LFUCG) Transportation Planning Section of Fayette County Kentucky is the designated staff agency for the MPO, serving the planning area of Fayette, Jessamine Counties and a small portion of Scott County at the Northern Fayette County border, the Lexington urbanized area and the two Jessamine County cities: Nicholasville and Wilmore.

Fayette and Jessamine County governments and the cities within actively participate and have regular representation on the various MPO committees. In consultation with Scott County on June 4, 2014 (following the 2010 Census that added a small portion of Scott County to the MPO Urbanized Area) Scott

APPENDIX

County Officials decided not to actively participate or be represented within the MPO process at this time. There was an interest to revisit participation in the future. The MPO pledged to continue conscientious coordination with Scott County in the on-going transportation planning process.

Lextran is the designated recipient of Federal Transit Administration funds designated for the urbanized area. Lextran constitutes an agency and instrumentality of the LFUCG and a political subdivision and public body corporate of the Commonwealth of Kentucky created pursuant to KRS 96A.020(1) for the purpose of promoting and developing mass transportation in its transit area and adjoining areas. The Board of Directors of Lextran manages, controls, and conducts the business, activities, and affairs of Lextran pursuant to KRS 96A.040(1) and may employ an Executive Director or General Manager pursuant to KRS 96A.070 (1).

In addition, Bluegrass Community Action, Bluegrass Ultra Transit (BUS) provides regional public transit between the city of Nicholasville and Lexington (hereinafter referred to as Jesslex). Federated Transportation Service of the Bluegrass (FTSB) also provides para-transit Medicare transportation services within the MPO planning area.

Performance-Based Transportation Planning & Programming

The MPO will develop and carry out a performance-based metropolitan transportation planning process in cooperation and consultation with KYTC and Lextran for Fayette and Jessamine Counties.

KYTC and the MPO mutually agree to share available data related to performance measurement and target setting with each other, subject to the policies and procedures of each agency. Examples of such data include, but are not limited to traffic counts, travel times/speeds, socioeconomic data, travel demand modeling information, transit ridership data and infrastructure condition measures.

The MPO will plan and program projects that contribute to the achievement of KYTC's statewide performance targets and/or commit to quantifiable performance targets for the metropolitan planning area or any portion thereof.

KYTC will notify the MPO as soon as practicable upon the establishment and/or modification of its performance targets.

Quantifiable performance targets must be approved by the MPO Policy Committee and reported to KYTC within 180 days of the establishment of statewide performance targets by KYTC.

The MPO will consider integration of relevant goals, objectives, and performance measures and targets developed by KYTC and Lextran into the transportation plans, programs and processes of the MPO. KYTC and Lextran will consider integration of relevant goals, objectives, and performance measures and targets developed by the MPO in decisions regarding their plans and planning activities within the MPO planning area.

The MPO, in collaboration with the KYTC and other agency partners, will develop, implement, and maintain a Congestion Management Process to assist in the identification and selection of projects for the Transportation Improvement Program (TIP) and Metropolitan Transportation Plan (MTP). The Congestion Management Process will be consistent with the KYTC's statewide performance targets or the MPO's performance targets as applicable.

Metropolitan Transportation Plan (MTP)

APPENDIX

In cooperation and coordination with KYTC, Lextran and other agency partners, the MPO will develop and maintain a Metropolitan Transportation Plan (MTP) in compliance with all relevant laws and regulations. The MPO shall review and update the transportation plan at least every five years to confirm the transportation plan's validity and consistency with current and forecasted transportation and land use conditions and trends, and to extend the forecast period to at least a 20-year planning horizon.

The MPO will initiate, in consultation with KYTC, Lextran and other agency partners, the selection of projects to include in the MTP. The initial list of MTP projects will be confirmed, supplemented by or revised by public input received during the public comment period of the MTP. The MPO will receive and address all comments and include documentation as part of the MTP.

KYTC will provide the MPO with sufficient details, including location, description and cost for projects proposed or endorsed by KYTC for inclusion in the MTP.

LFUCG (including the Division of Engineering, Traffic Engineering, and other agencies as appropriate) will provide the MPO with sufficient details, including location, description and cost for projects proposed or endorsed by the LFUCG for inclusion in the MTP.

Lextran will provide the MPO with sufficient details, including location, description and cost for projects proposed or endorsed by Lextran and the MPO for inclusion in the MTP.

At the request of the MPO, KYTC will provide preliminary system-level estimates of costs necessary to adequately operate and maintain the Federal-aid highway system within the planning area. The MPO may adjust these preliminary cost estimates with KYTC's concurrence.

At the request of the MPO, Lextran, BUS, FTSB, Jessamine County Fiscal Court and the cities of Nicholasville and Wilmore, LFUCG agency partners including Engineering - Traffic Engineering - Streets and Roads and other agencies as necessary will provide preliminary system-level estimates of costs necessary to adequately operate and maintain the local highway system and transit systems within the planning area. The MPO may adjust these preliminary cost estimates with KYTC's concurrence.

At the request of the MPO, KYTC will provide available information on historic levels of transportation expenditures for Fayette and Jessamine Counties and the state of Kentucky; an estimate of current typical annual transportation spending at the state level; an estimate of the annual construction cost inflation rate over the time horizon covered by the MTP; and an estimate of the annual rate of change of transportation spending over the life of the MTP. The MPO may adjust the annual construction cost inflation rate based on local conditions. Upon agreement with KYTC, the MPO may also adjust the annual rate of change of transportation spending.

The MPO is responsible for developing a financially reasonable MTP in consultation with KYTC, Lextran and other agency partners, and will be in compliance with current federal planning regulations set forth by the Federal Highway Administration (FHWA) and Federal Transit Administration (FTA). The MTP will follow public participation guidelines outlined in the MPO Participation Plan and in compliance with state and federal regulations.

The MPO will prepare necessary amendments and/or administrative modifications to the MTP that will include a project description, location, cost estimates, and impact on financial constraint, if applicable. Amendments and administrative modifications will follow the procedures outlined in the latest approved MPO Participation Plan.

APPENDIX

The final MTP will be approved by the MPO Transportation Policy Committee and will include a financial plan that clearly states the methods and assumptions used to determine the financial reasonableness of the MTP.

Transportation Improvement Program (TIP)

In cooperation and coordination with KYTC, Lextran and other agency partners, the MPO will develop and maintain a Transportation Improvement Program (TIP) as the short-range program of projects for the MPO area. The TIP will be consistent with all federal requirements and will cover a period of no less than four years at the time of its adoption, and it will be updated at least every four years. The final TIP will be approved by the MPO Policy Committee.

Projects included in the TIP will be consistent with the Kentucky Highway Plan, developed by KYTC in cooperation with the MPO and reviewed/approved biennially by the Kentucky General Assembly.

The MPO is responsible for developing a fiscally constrained TIP. The cooperative process for completing the TIP Financial Plan shall be as follows:

For federal funding categories not sub-allocated to the MPO, the financial plan is based on the fiscal constraint maintained by the KYTC and demonstrated in the Kentucky STIP.

KYTC will provide an estimate of available federal funds for the funding categories that are sub-allocated to the MPO.

The MPO will ensure that fiscal constraint is maintained for funds that are sub-allocated to the MPO.

The MPO is responsible for ensuring that the estimated available funds and project costs in the TIP reflect year of expenditure (YOE) amounts. KYTC, Lextran, and other agency partners will assist the MPO in identifying YOE costs for TIP projects.

At the request of the MPO, KYTC will provide cost estimates and project schedules for projects sponsored or endorsed by KYTC. LFUCG (including the Division of Engineering, Traffic Engineering, and other agencies as appropriate) will provide this information for projects proposed or endorsed by the LFUCG for inclusion in the TIP. KYTC may, at its discretion, provide cost estimates for projects sponsored by other agencies.

The MPO will amend or modify the TIP as needed to reflect changes in project implementation schedules and costs; the development of new operations, maintenance or safety projects by KYTC; or successful grant applications for federal program funds.

Participation Plan

In compliance with metropolitan planning regulations, the MPO has developed a Participation Plan which outlines a formal public involvement process, including public notice and comment periods, which is followed in the development of the TIP and MTP. The MPO agrees to follow its public involvement process as a part of all metropolitan-wide transportation planning initiatives. The MPO will review the Participation Plan annually and initiate a major update on a 5-year cycle or as determined by the annual review. Minor revisions to the Participation Plan will not require public review and notifications.

Annual Listing of Obligated Projects

The MPO will develop an Annual Listing of Obligated Projects outlining all projects within the metropolitan planning area for which funding has been obligated over the past fiscal year.

Following the end of each fiscal year, KYTC will provide information to the MPO on funds obligated under 23 U.S.C.

Lextran and BUS will prepare an annual listing of obligated projects that meet all applicable Federal requirements and will share the information with the MPO on funds obligated under 49

U.S.C. Chapter 53 or other funding sources.

The MPO will provide the annual listing of obligated projects to KYTC in time for KYTC to submit the listing to FHWA by the Federal deadline.

Unified Planning Work Program

The MPO will annually prepare a Unified Planning Work Program (UPWP) for the following fiscal year based on anticipated funding levels. The MPO will submit a copy to all applicable parties for review and determination of eligibility, in accordance with established schedules and document routing requirements.

The MPO will coordinate with KYTC, Lextran and other agency partners to determine appropriate work tasks to be included in the UPWP.

Funding parameters for the UPWP will be determined by the amount of Kentucky Metropolitan Planning (PL) funds distributed to the MPO by the Kentucky MPO Council. This is determined each year in consultation with KYTC. Additionally, the inclusion of FTA funds shall be considered during the development of the UPWP.

The MPO will coordinate with Lextran on the development and submittal of the FTA 5303 application. The LFUCG contracts with Lextran for all transit services, with Lextran as the recipient of FTA funds. The MPO will not be responsible for providing the local match to FTA 5303 funds, unless otherwise negotiated.

Committee Membership

KYTC will be permitted to appoint at least one voting member to the MPO Policy Committee and at least two voting members to the MPO Technical Committee.

Lextran will be represented by the General Manager on the MPO Policy Committee, with voting membership.

Lextran transit staff will be permitted one voting member on the MPO Transportation Technical Coordinating Committee (TTCC).

Transit Coordination

The MPO will coordinate with Lextran and other regional transit providers on matters related to public transportation as they pertain to the MPO transportation planning process.

The MPO will provide input to Lextran on MPO related planning projects and can represent the MPO on Lextran committees or meetings on an as needed or ad-hoc basis.

The MPO will coordinate with Lextran to ensure that all identified transit-related projects are included in the TIP.

The MPO, Lextran and KYTC agree that the public and agency outreach procedures for TIP Amendment and Administrative Modification processes included in the Participation Plan are adequate to meet the public input required for Lextran's Program of Projects (POP) and meet the intent of the federal planning regulations.

The MPO will coordinate and assist Lextran and other public transit providers in the development of the Coordinated Public- Human Services Transportation Plan

Termination and Modification

It is the intent of the MPO, KYTC, and Lextran to carry forward the planning process on a continuing basis. It is the intention of the parties that this agreement will be in effect for a period beginning on the execution of this agreement.

This agreement will remain in effect until terminated or superseded by a new agreement. Any agency subject to this agreement may withdraw from the agreement by giving thirty (30) days written notice to all other agencies subject to the agreement. In the event that an agency withdraws from this agreement, the rights and responsibilities of the remaining agencies will remain unchanged with respect to each other until this agreement is amended or replaced.

In the event that this agreement requires modification for any reason, the required modifications may be accomplished through the execution of a letter modification or supplementary agreement between all agencies subject to this agreement.

This agreement may be amended or replaced with a new agreement at any time upon the written consent of all remaining signatory agencies. In the event that this agreement is replaced with a new agreement, this agreement will become null and void when the new agreement goes into effect.

Dispute Resolution


Should a dispute arise which cannot be resolved between agency staffs and/or MPO committee members, the matter will be elevated to agency executives and, if necessary, the governor. The Federal Highway Administration (FHWA), Federal Transit Administration (FTA) and any other relevant agencies will be consulted throughout the dispute resolution process, as needed, and their input will be taken into consideration in attempting to resolve disputes. In the event that a dispute cannot be resolved, any

APPENDIX

signatory agency to this agreement may withdraw from the agreement as described above under Termination and Modification.

The signatures below signify the acceptance and approval of this agreement.

LEXINGTON AREA METROPOLITAN PLANNING ORGANIZATION



DAVID WEST
JESSAMINE COUNTY JUDGE EXECUTIVE
LEXINGTON AREA MPO POLICY COMMITTEE CHAIRMAN

7/12/17

DATE

**COMMONWEALTH OF KENTUCKY
TRANSPORTATION CABINET**



GREG THOMAS
KYTC SECRETARY of TRANSPORTATION

8/8/17

DATE

TRANSIT AUTHORITY OF LEXINGTON-FAYETTE URBAN COUNTY GOVERNMENT (LEXTRAN)



CARRIE BUTLER
LEXTRAN GENERAL MANAGER

7/12/17

DATE

**APPROVED AS TO FORM & LEGALITY
TRANSPORTATION CABINET**



OFFICE OF LEGAL SERVICES

7/31/17

DATE